

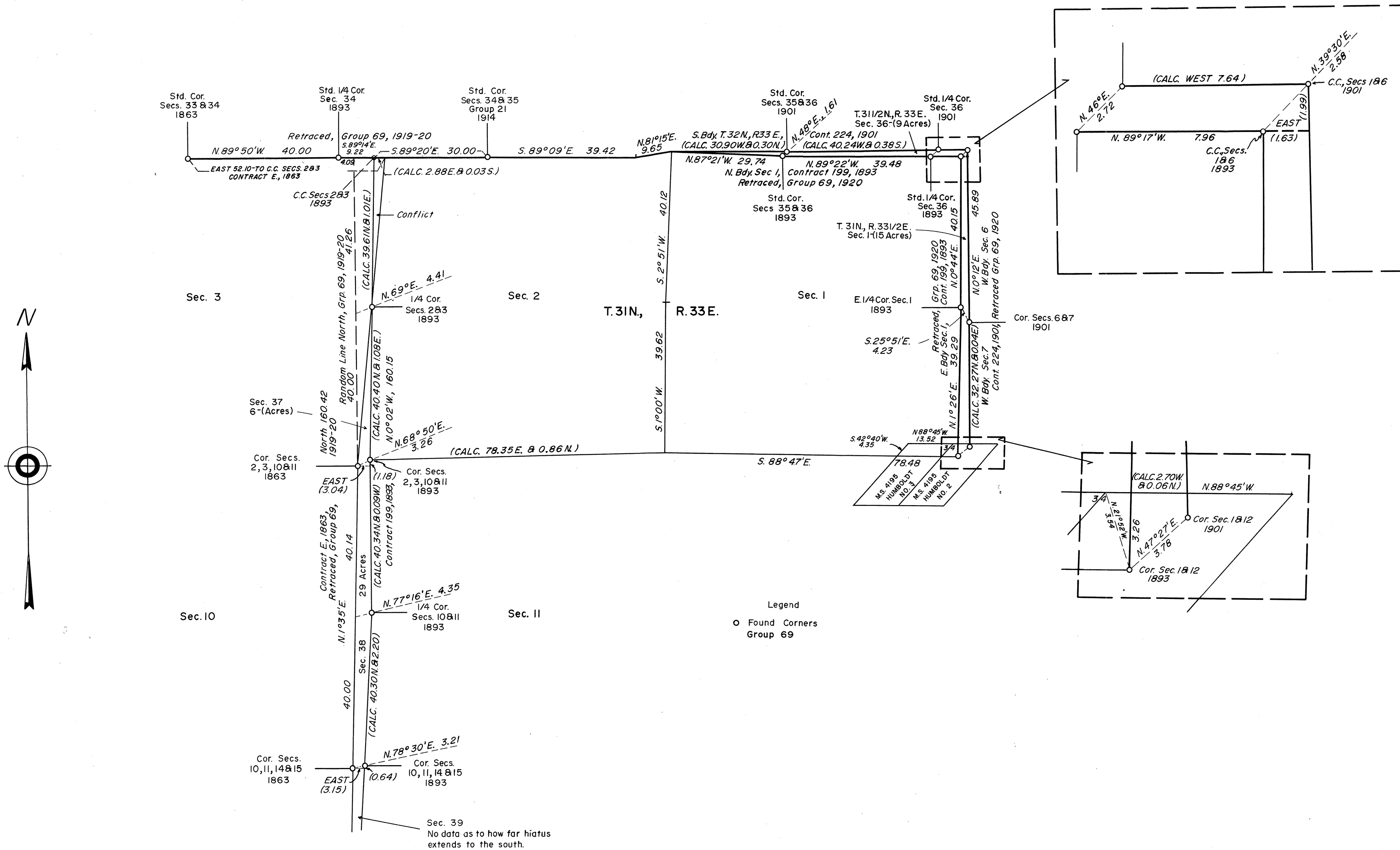
NEVADA PROTRACTION DIAGRAM

T. 31, 31 1/2 N., R. 33 E. & T. 31 N., R. 33 1/2 E.

BUREAU OF LAND MANAGEMENT
NEVADA
CADASTRAL ENGINEERING

OFFICIALLY FILED
NEVADA LAND OFFICE
10:00 A.M. JUNE 13, 1966

APR 15 1966
NEVADA STATE OFFICE
RENO, NEVADA



Legend
○ Found Corners
Group 69

Note: All triangulation stations are U. S. C. & G. S. stations unless otherwise noted.

Except where shown otherwise, area of each unsurveyed section is 640 acres.

Data shown in parenthesis () are determinations made from existing information and subject to rectification.



Lines Surveyed ———
Lines Protracted — — — —
Iron Post Control Point
Tellurometer Control Point ◊

UNITED STATES DEPARTMENT OF THE INTERIOR
BUREAU OF LAND MANAGEMENT

Washington, D.C. March 8, 1966
This diagram represents the official protraction of the rectangular system of survey and shows area of unsurveyed sections in T. 31, 31 1/2 N., R. 33 E. & T. 31 N., R. 33 1/2 E. Mount Diablo Meridian, Nevada, and is hereby approved.

For The Director
E. H. Kennington
Chief, Division of Engineering

Nevada Protraction Diagram No. 307
Unit No. 24B