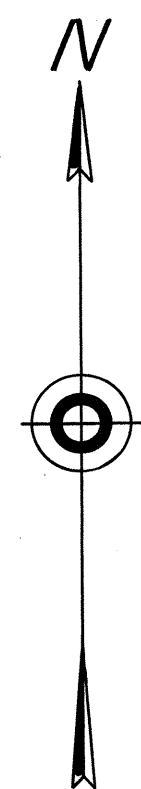
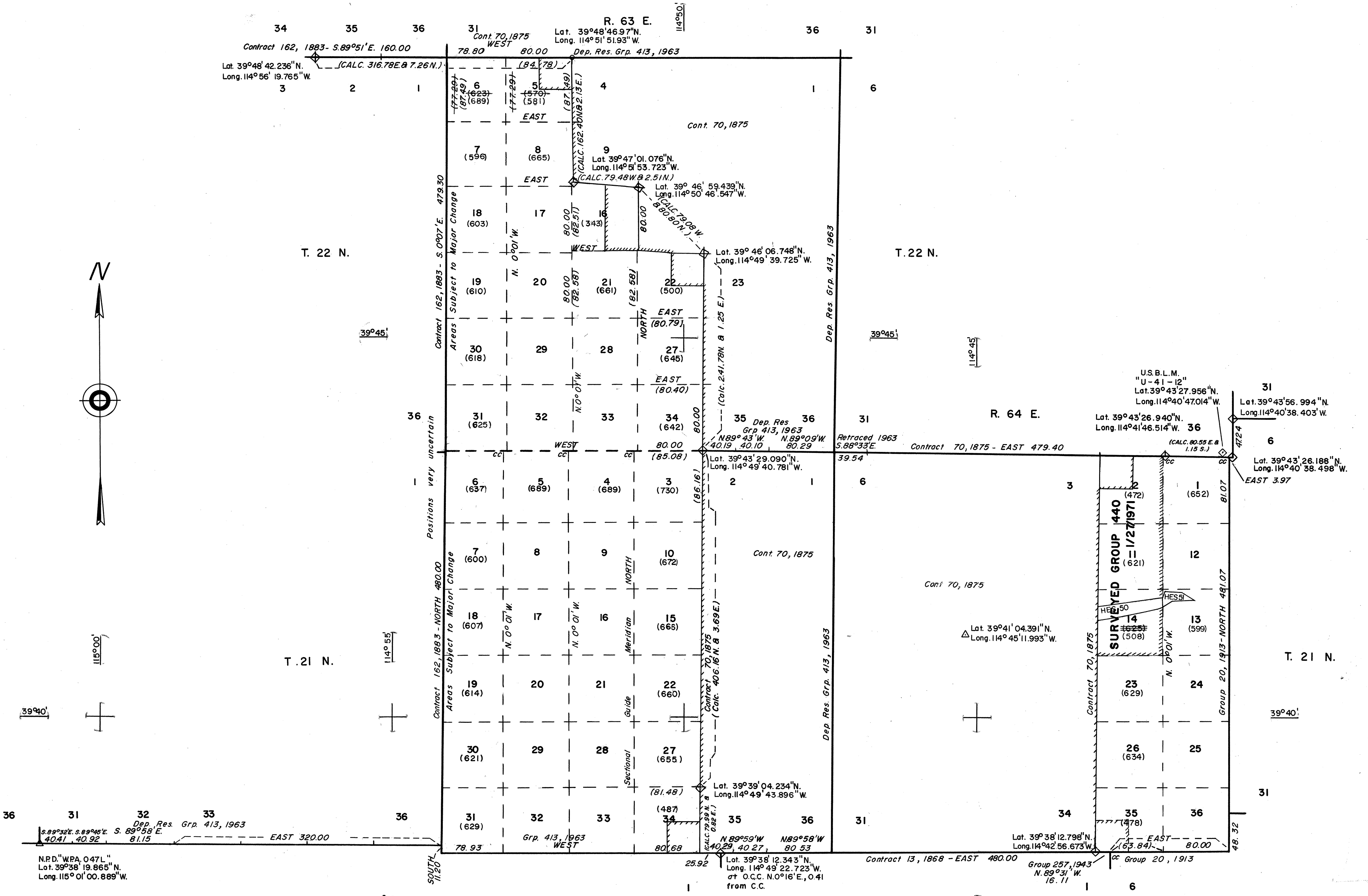


NEVADA PROTRACTION DIAGRAM

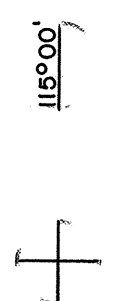
Ts. 21 & 22 N., R. 63 E., T. 21 N., R. 64 E.

BUREAU OF LAND MANAGEMENT
NEVADA
CADASTRAL ENGINEERING

OFFICIALLY FILED
NEVADA LAND OFFICE
10:00 A.M. JUNE 13, 1966



39°40'



Contract 13, 1868 - EAST 480.00
 N.P.D. WPA 047L"
 Lat. 39° 38' 19.865" N.
 Long. 115° 01' 00.889" W.

FOURTH

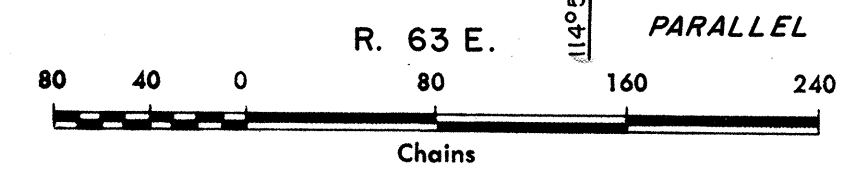
Note: All triangulation stations are U. S. C. & G. S. stations unless otherwise noted.

Except where shown otherwise, area of each unsurveyed section is 640 acres.

Data shown in parenthesis () are determinations made from existing information and subject to rectification.

115° 55'

STANDARD



- Lines Surveyed
- Lines Protracted
- Iron Post Control Point
- Tellurometer Control Point

R. 64 E.
NORTH
UNITED STATES DEPARTMENT OF THE INTERIOR
BUREAU OF LAND MANAGEMENT

Washington, D.C. January 22, 1964
 This diagram represents the official protraction of the rectangular system of survey and shows area of unsurveyed sections in Ts. 21 & 22 N., R. 63 E.; T. 21 N., R. 64 E. Mount Diablo Meridian, Nevada, and is hereby approved.

For The Director

 Chief, Division of Engineering