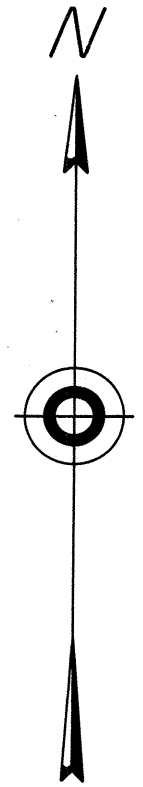
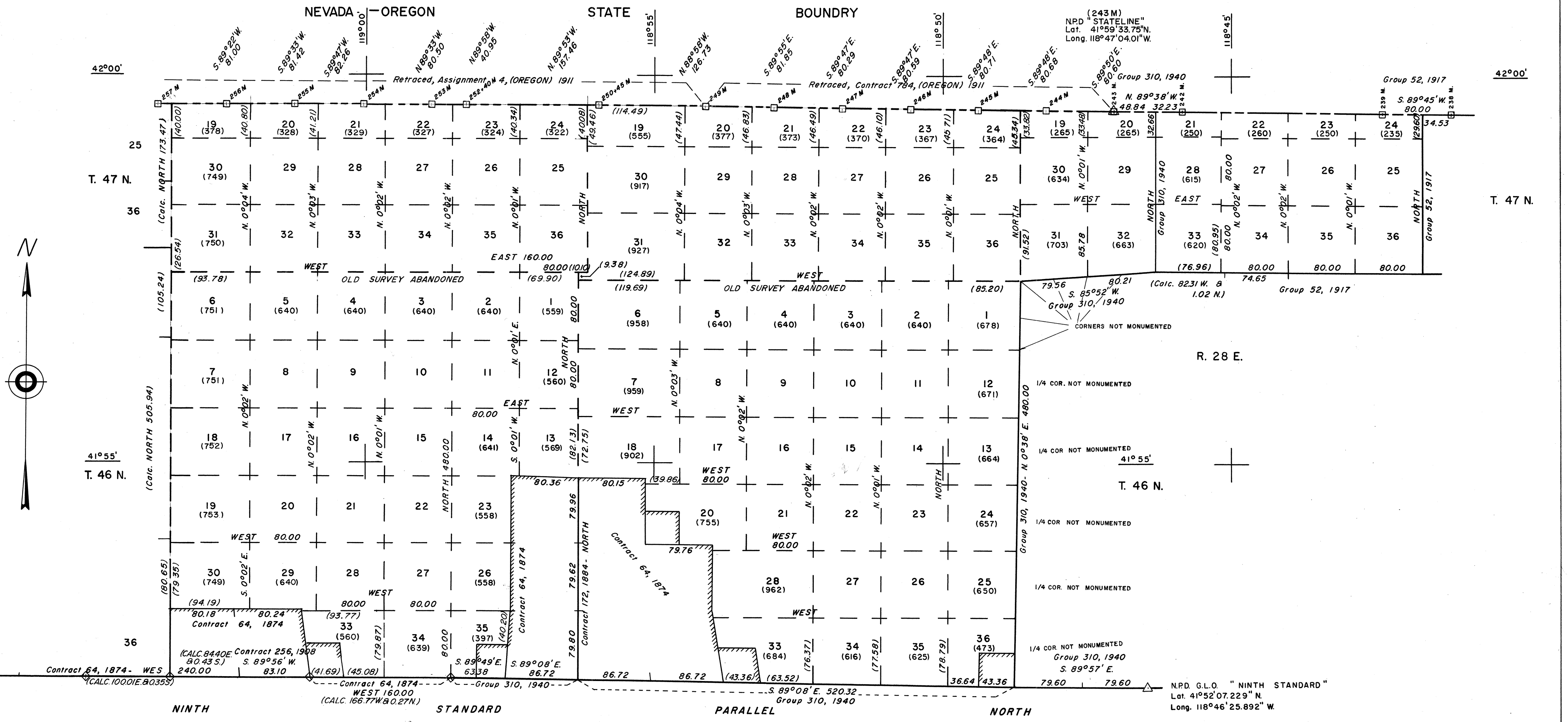


NEVADA PROTRACTION DIAGRAM
 Ts. 46 and 47 N., Rs. 26 and 27 E.
 T. 47 N., R. 28 E.
 BUREAU OF LAND MANAGEMENT
 NEVADA
 CADASTRAL ENGINEERING

OFFICIALLY FILED
 NEVADA LAND OFFICE
 10:00 A.M. JUNE 13, 1966



◇ Corners found by Nevada Highway Dept. used in ties to Highway R/W, 1958.

R. 26 E.
 119°00'

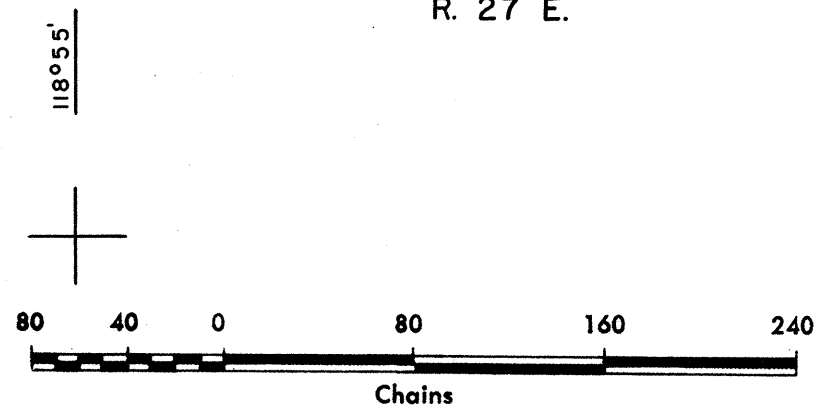
R. 27 E.
 118°55'

R. 28 E.
 118°45'

Note: All triangulation stations are U. S. C. & G. S. stations unless otherwise noted.

Except where shown otherwise, area of each unsurveyed section is 640 acres.

Data shown in parenthesis () are determinations made from existing information and subject to rectification.



Lines Surveyed

Lines Protracted

Iron Post Control Point

Tellurometer Control Point

UNITED STATES DEPARTMENT OF THE INTERIOR
 BUREAU OF LAND MANAGEMENT

Washington, D.C. February 25, 1964
 This diagram represents the official protraction of the rectangular system of survey and shows area of unsurveyed sections in Ts. 46 and 47 N., Rs. 26 and 27 E.; T. 47 N., R. 28 E. Mount Diablo Meridian, Nevada, and is hereby approved.

For The Director

 Chief, Division of Engineering