

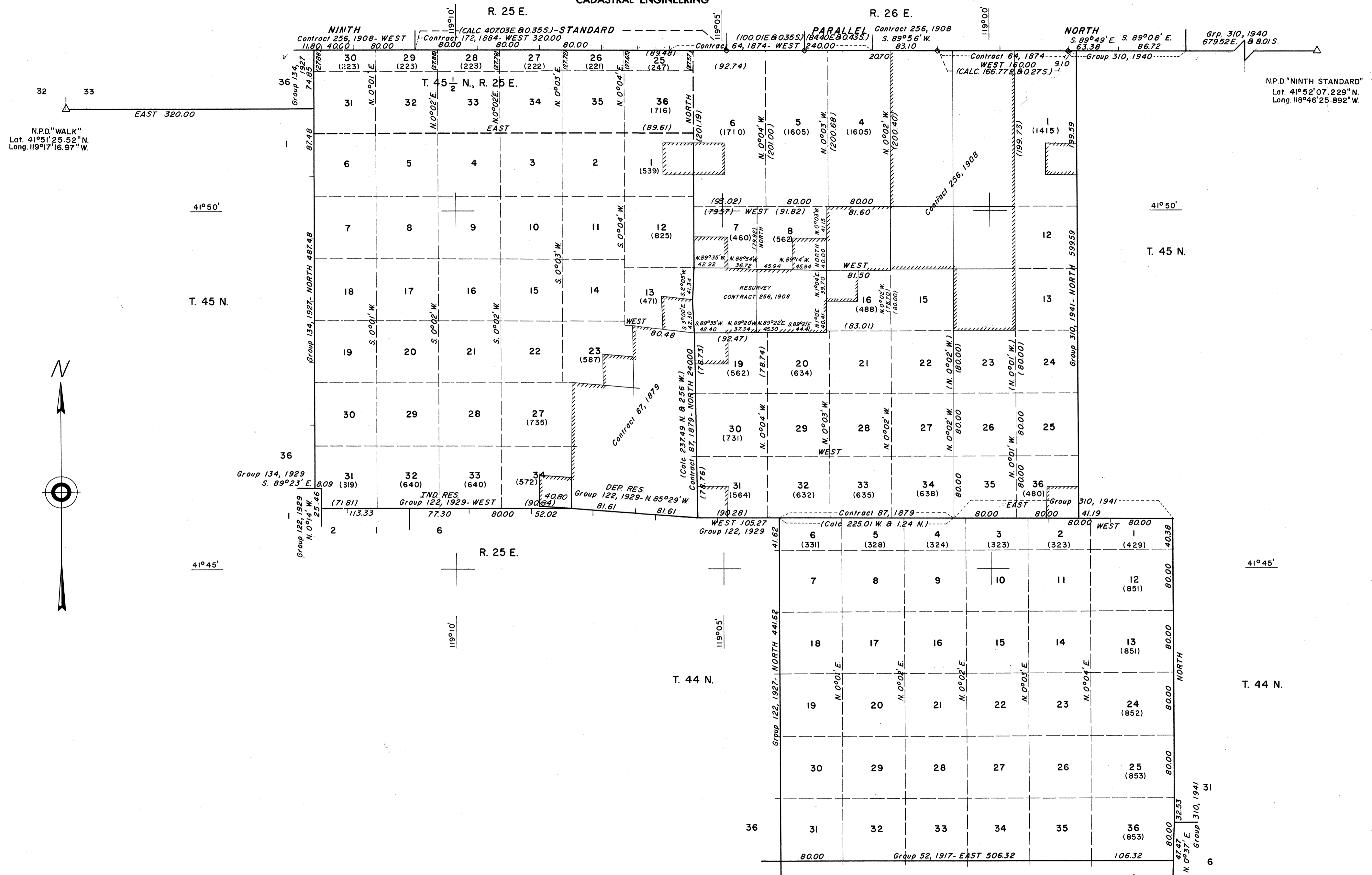
NEVADA PROTRACTION DIAGRAM

T. 44 N., R. 26 E.; T. 45 N.,
Rs. 25 and 26 E.; T. 45 1/2 N., R. 25 E.
BUREAU OF LAND MANAGEMENT

OFFICIALLY FILED
NEVADA LAND OFFICE
10:00 A.M. JUNE 13, 1966

NEVADA
CADASTRAL ENGINEERING

◊ Corners found by Nevada Highway Dept.
used in ties to highway R/W, 1958.



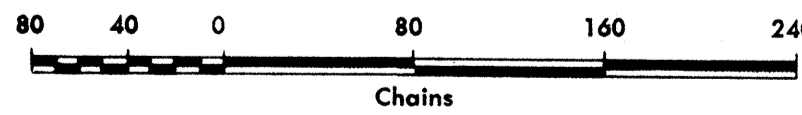
N.P.D. "WALK"
Lat. 41°51'25.52"N.
Long. 119°17'16.97"W.

N.P.D. "NINTH STANDARD"
Lat. 41°52'07.229"N.
Long. 118°46'25.892"W.

Note: All triangulation stations are U. S. C. & G. S. stations unless otherwise noted.

Except where shown otherwise, area of each unsurveyed section is 640 acres.

Data shown in parenthesis () are determinations made from existing information and subject to rectification.



- Lines Surveyed
- Lines Protracted
- Iron Post Control Point
- Tellurometer Control Point

R. 26 E.
UNITED STATES DEPARTMENT OF THE INTERIOR
BUREAU OF LAND MANAGEMENT

Washington, D.C. February 25, 1964
This diagram represents the official protraction of the rectangular system of survey and shows area of unsurveyed sections in T. 44 N., R. 26 E.; T. 45 N., Rs. 25 and 26 E.; T. 45 1/2 N., R. 25 E. Mount Diablo Meridian, Nevada, and is hereby approved.

For The Director

Chief, Division of Engineering