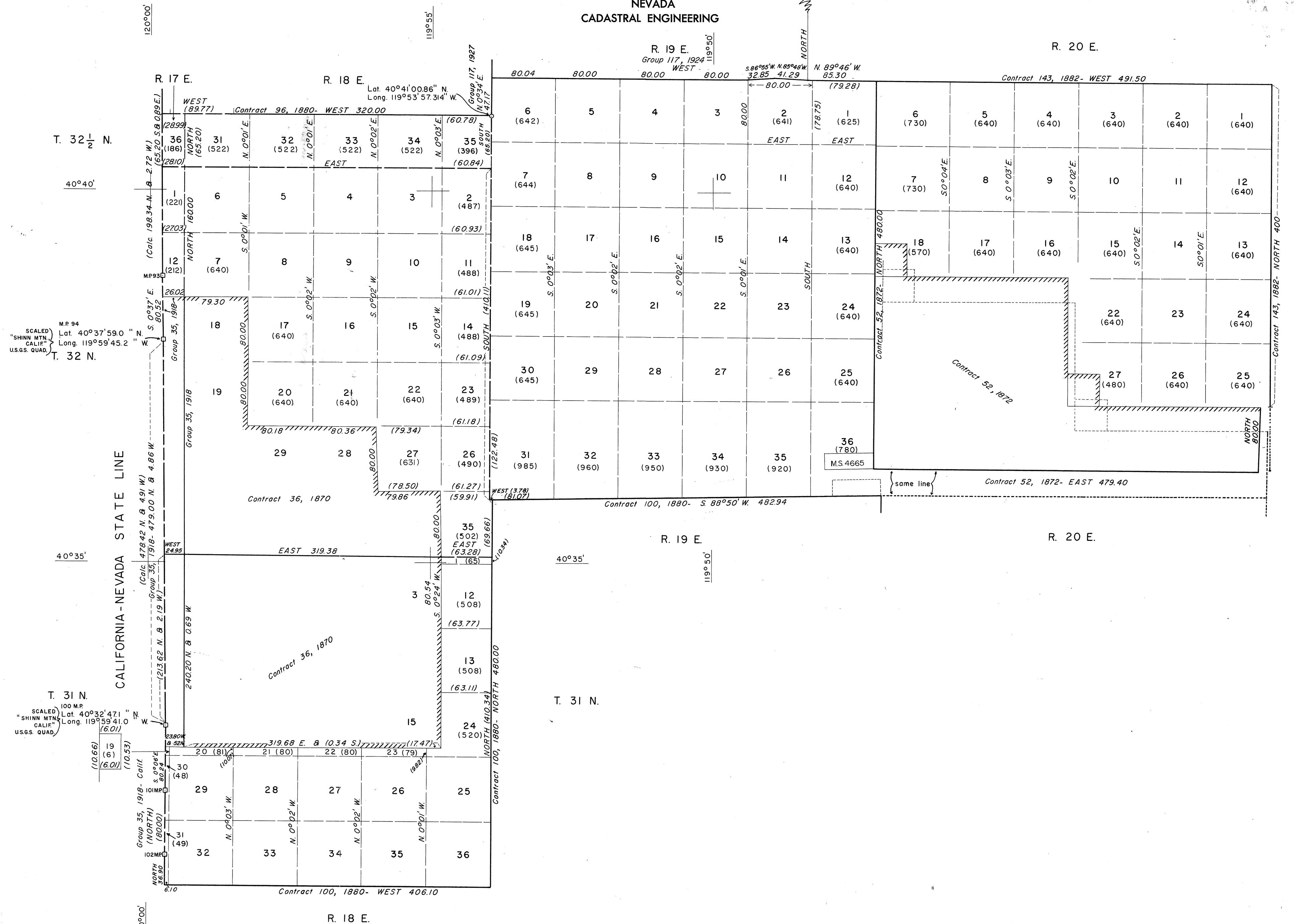


NEVADA PROTRACTION DIAGRAM
 T. 31 N., R. 18 E.; T. 32 N., Rs. 17,
 18, 19, and 20 E.; T. 32 1/2 N., R. 17 & 18 E.
 BUREAU OF LAND MANAGEMENT
 NEVADA
 CADASTRAL ENGINEERING

OFFICIALLY FILED
 NEVADA LAND OFFICE
 10:00 A.M. JUNE 13, 1966



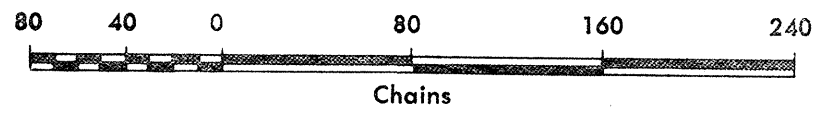
SCALED
 "SHINN MTH
 CALIF"
 U.S.G.S. QUAD.
 M.P. 94
 Lat. 40°37'59.0" N.
 Long. 119°59'45.2" W.
 T. 32 N.

SCALED
 "SHINN MTH
 CALIF"
 U.S.G.S. QUAD.
 100 M.P.
 Lat. 40°32'47.1" N.
 Long. 119°59'41.0" W.
 T. 31 N.

Note: All triangulation stations are U. S. C. & G. S. stations unless otherwise noted.

Except where shown otherwise, area of each unsurveyed section is 640 acres.

Data shown in parenthesis () are determinations made from existing information and subject to rectification.



- Lines Surveyed
- Lines Protracted
- Iron Post Control Point
- Tellurimeter Control Point

UNITED STATES DEPARTMENT OF THE INTERIOR
 BUREAU OF LAND MANAGEMENT

Washington, D.C. January 22, 1965
 This diagram represents the official protraction of the rectangular system of survey and shows area of unsurveyed sections in T. 31 N., R. 18 E.; T. 32 N., Rs. 17, 18, 19, and 20 E.; T. 32 1/2 N., R. 17 & 18 E. Mount Diablo Meridian, Nevada, and is hereby approved.

For The Director