

NEVADA PROTRACTION DIAGRAM

Ts. 38 1/2, 39, & 40 N., R. 27 E.; Ts. 39, 39 1/2, 40 &  
40 1/2 N., R. 28 E.; Ts. 39, 40 & 40 1/2 N., R. 29 E.

BUREAU OF LAND MANAGEMENT

NEVADA

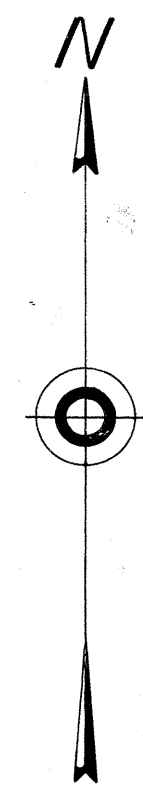
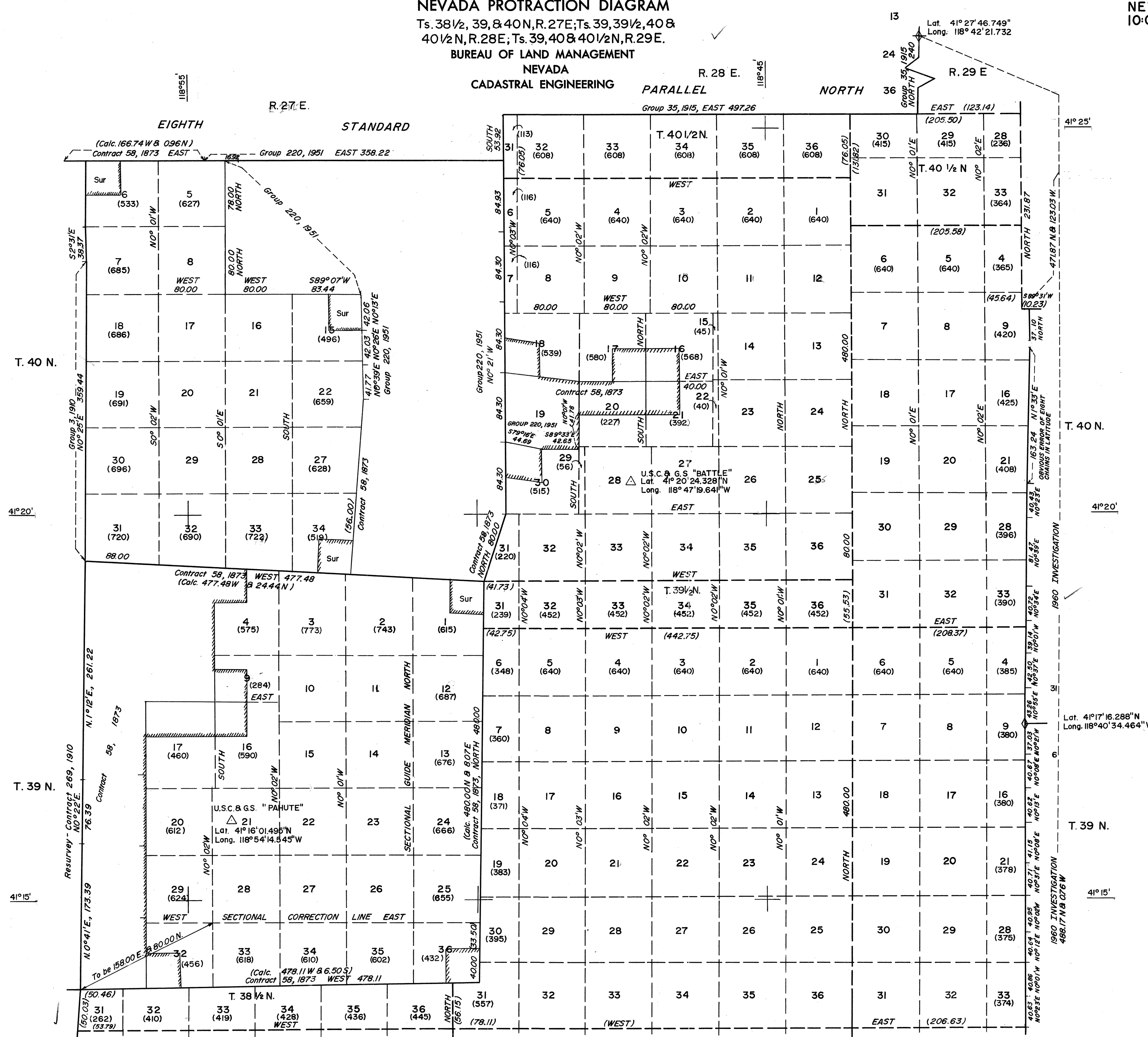
R. 28 E.

CADASTRAL ENGINEERING

PARALLEL

NORTH

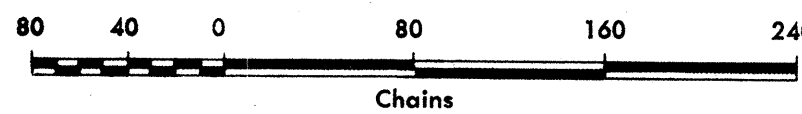
Lat. 41° 27' 46.749"  
Long. 118° 42' 21.732"



Note: All triangulation stations are U. S. C. & G. S. stations unless otherwise noted.

Except where shown otherwise, area of each unsurveyed section is 640 acres.

Data shown in parenthesis ( ) are determinations made from existing information and subject to rectification.



- Lines Surveyed
- Lines Protracted
- Iron Post Control Point
- Tellurometer Control Point

UNITED STATES DEPARTMENT OF THE INTERIOR  
BUREAU OF LAND MANAGEMENT

Washington, D.C. February 3, 1964  
This diagram represents the official protraction of the rectangular system of survey and shows area of unsurveyed sections in Ts. 38 1/2, 39 & 40 N., R. 27 E.; Ts. 39, 39 1/2, 40 & 40 1/2 N., R. 28 E.; Ts. 39, 40 & 40 1/2 N., R. 29 E. Mount Diablo Meridian, Nevada, and is hereby approved.

For The Director  
  
Chief, Division of Engineering