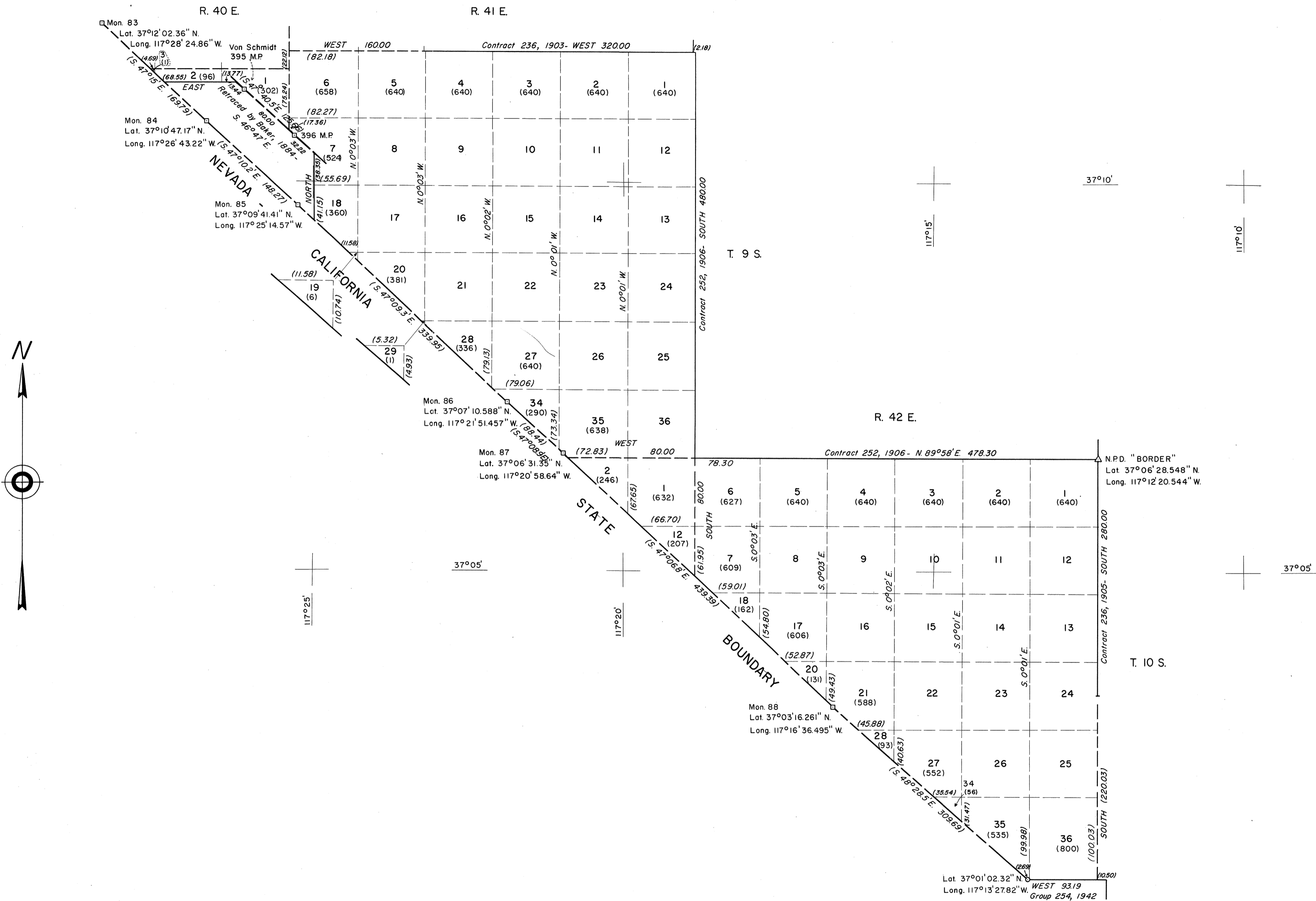


NEVADA PROTRACTION DIAGRAM  
T. 9 S., R. 40 E.; Ts. 9 and 10 S.; R. 41 E., T. 10 S., R. 42 E.

BUREAU OF LAND MANAGEMENT  
NEVADA  
CADASTRAL ENGINEERING

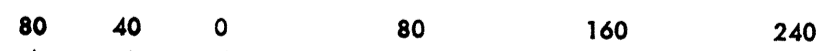
OFFICIALLY FILED  
NEVADA LAND OFFICE  
10:00 A.M. JUNE 13, 1966



Note: All triangulation stations are U. S. C. & G. S. stations unless otherwise noted.

Except where shown otherwise, area of each unsurveyed section is 640 acres.

Data shown in parenthesis ( ) are determinations made from existing information and subject to rectification.



- Lines Surveyed
- Lines Protracted
- Iron Post Control Point
- Tellurometer Control Point

UNITED STATES DEPARTMENT OF THE INTERIOR  
BUREAU OF LAND MANAGEMENT  
Washington, D.C. January 27, 1965  
This diagram represents the official protraction of the rectangular system of survey and shows area of unsurveyed sections in T. 9 S., R. 40 E.; Ts. 9 and 10 S., R. 41 E.; T. 10 S., R. 42 E. Mount Diablo Meridian, Nevada, and is hereby approved.

For the Director  
*[Signature]*  
Chief, Division of Engineering