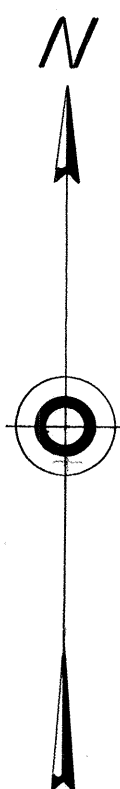


NEVADA PROTRACTION DIAGRAM

T. 4S., Rs. 57 & 58E.

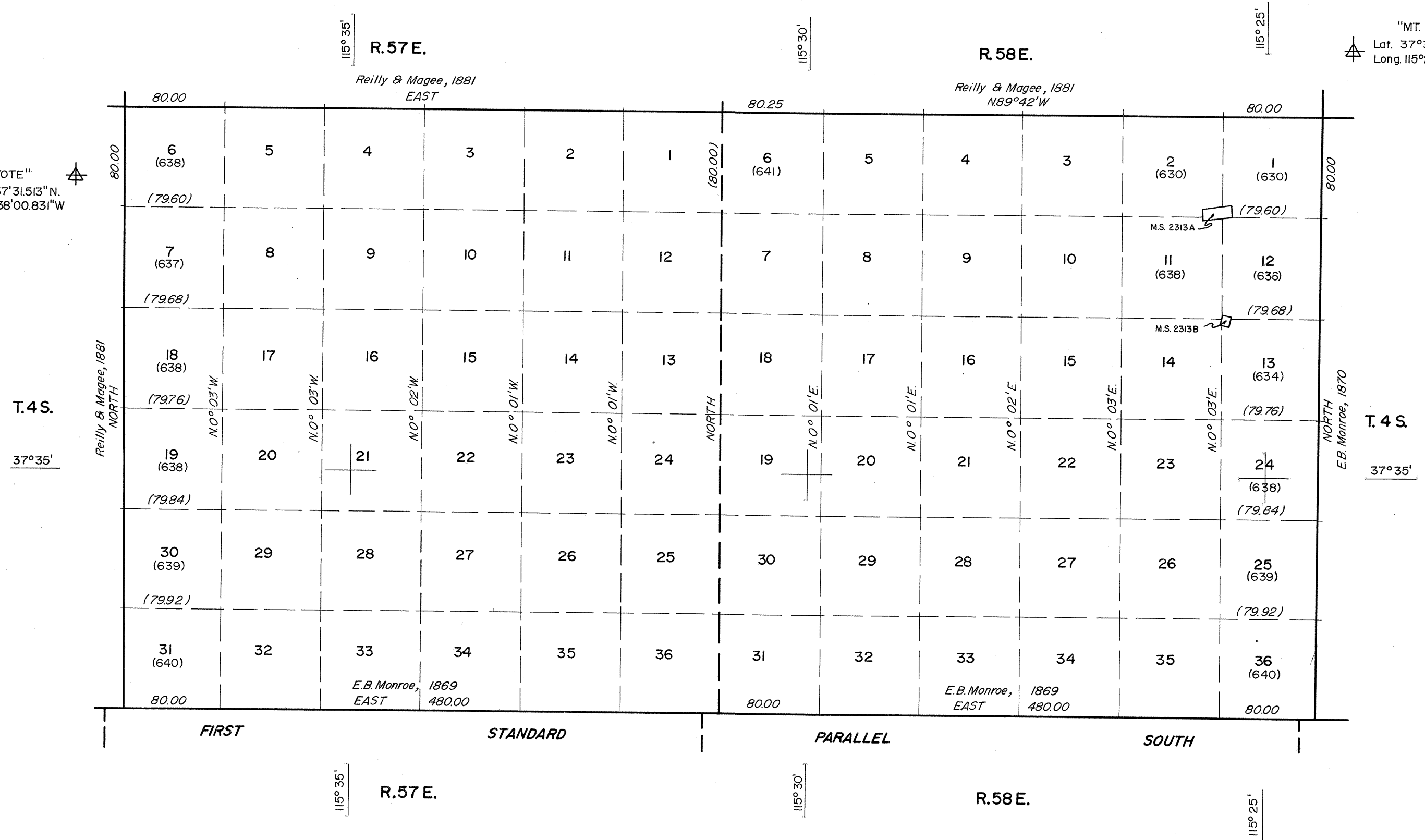
BUREAU OF LAND MANAGEMENT
NEVADA
CADASTRAL ENGINEERING

OFFICIALLY FILED
NEVADA LAND OFFICE
10:00 A.M. JUNE 13, 1966



"COYOTE"
Lat. 37°37'31.513"N.
Long. 115°38'00.831"W

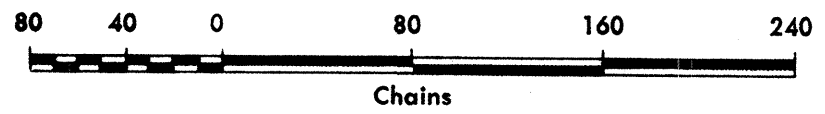
"MT. IRISH"
Lat. 37°38'41.477"N.
Long. 115°24'01.996"W



Note: All triangulation stations are U. S. C. & G. S. stations unless otherwise noted.

Except where shown otherwise, area of each unsurveyed section is 640 acres.

Data shown in parenthesis () are determinations made from existing information and subject to rectification.



- Lines Surveyed
- Lines Protracted
- Iron Post Control Point
- Tellurometer Control Point

UNITED STATES DEPARTMENT OF THE INTERIOR
BUREAU OF LAND MANAGEMENT

Washington, D.C. May 28, 1964
This diagram represents the official protraction of the rectangular system of survey and shows area of unsurveyed sections in T. 4S., Rs. 57 & 58E.

Mount Diablo Meridian, Nevada, and is hereby approved.

For The Director

Chief, Division of Engineering