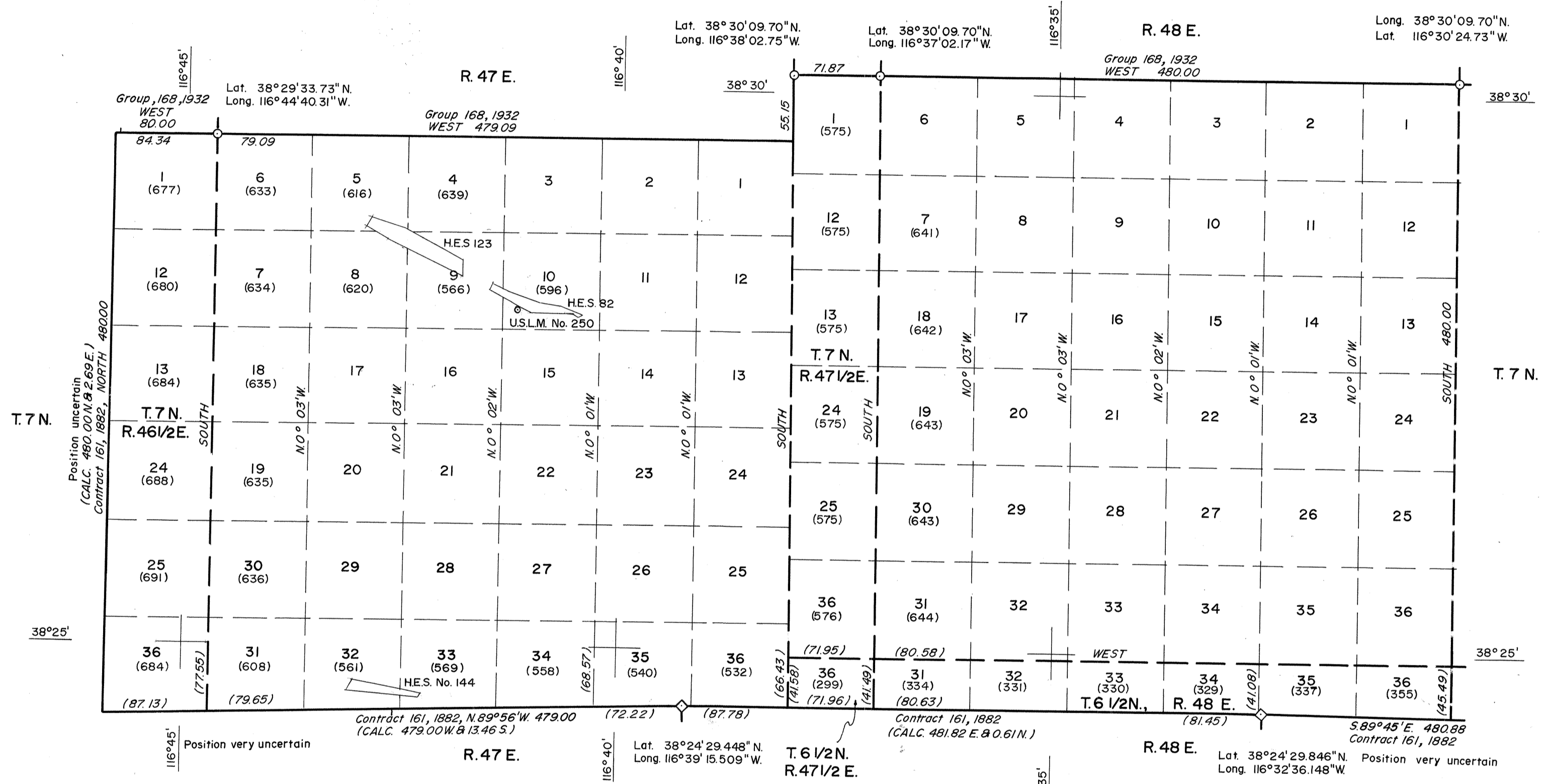


NEVADA PROTRACTION DIAGRAM
 T. 6 1/2 N., Rs. 47 1/2 & 48 E.
 T. 7 N., Rs. 46 1/2, 47, 47 1/2 & 48 E.
 BUREAU OF LAND MANAGEMENT
 NEVADA
 CADASTRAL ENGINEERING

OFFICIALLY FILED
 NEVADA LAND OFFICE
 10:00 A.M. JUNE 13, 1966

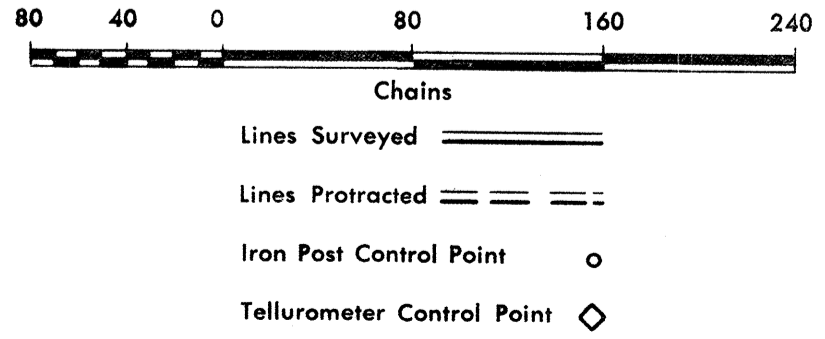


NOTE: GROUP 168, 1931, RETRACED SOUTH ON BLANK LINE FROM SW. CORNER T. 8 N., R. 49 E. 519.09 CHAINS TO A POINT 158.71 CHAINS EAST OF N.E. CORNER T. 6 N., R. 48 E.

Note: All triangulation stations are U. S. C. & G. S. stations unless otherwise noted.

Except where shown otherwise, area of each unsurveyed section is 640 acres.

Data shown in parenthesis () are determinations made from existing information and subject to rectification.



UNITED STATES DEPARTMENT OF THE INTERIOR
 BUREAU OF LAND MANAGEMENT
 Washington, D.C. October 26, 1964
 This diagram represents the official protraction of the rectangular system of survey and shows area of unsurveyed sections in T. 6 1/2 N., Rs. 47 1/2 & 48 E. T. 7 N., Rs. 46 1/2, 47, 47 1/2 & 48 E. Mount Diablo Meridian, Nevada, and is hereby approved.

For The Director
[Signature]
 Chief, Division of Engineering