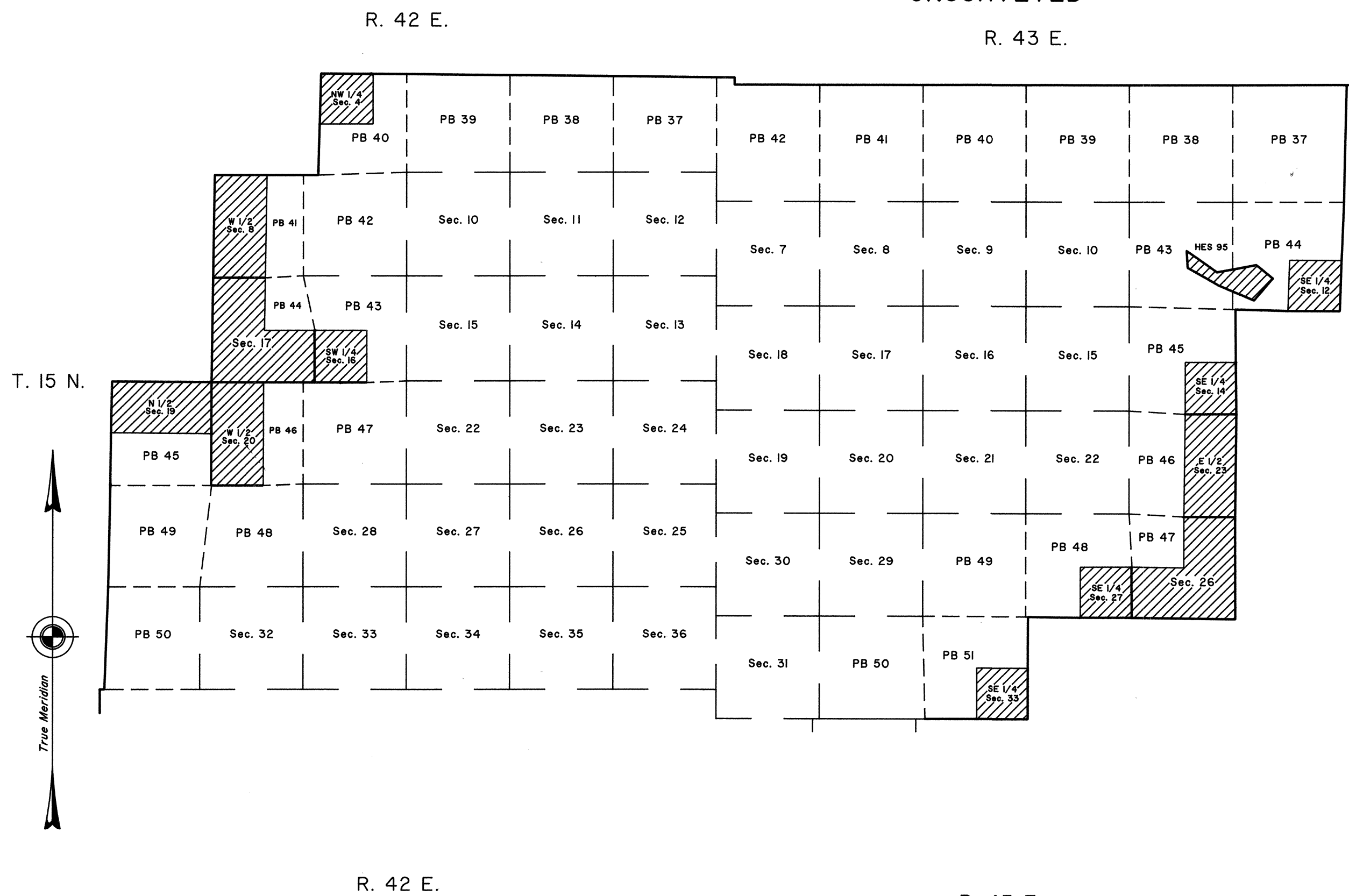


TOWNSHIPS 15 NORTH, RANGES 42 AND 43 EAST;  
TOWNSHIP 14 NORTH, RANGE 44 EAST, OF THE MOUNT DIABLO MERIDIAN, NEVADA

AMENDED NEVADA PROTRACTION DIAGRAM No. 232, UNIT No. 58

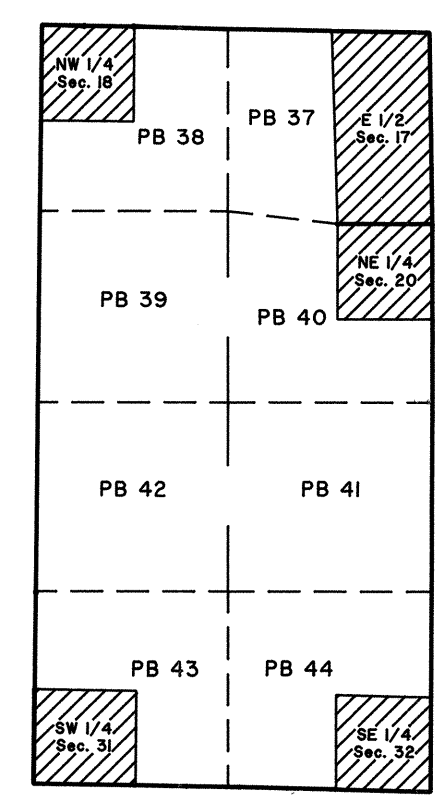
UNSURVEYED

OFFICIALLY FILED  
NEVADA STATE OFFICE  
at 10:00 AM on March 5, 1998



T. 15 N.

TOWNSHIP INDEX		
T. 15 N.	R. 42 E.	Sheet 2
T. 15 N.	R. 43 E.	Sheet 3
T. 14 N.	R. 44 E.	Sheet 4

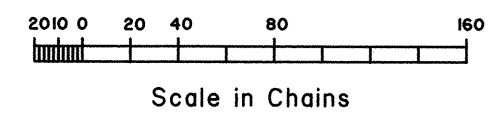


UNITED STATES DEPARTMENT OF THE INTERIOR  
BUREAU OF LAND MANAGEMENT  
Reno, Nevada March 3, 1998  
This diagram represents the official protraction of the rectangular system of surveys and is hereby accepted.

For the Director  
*Robert H. Thompson*  
Acting Chief Cadastral Surveyor, Nevada

Amended Nevada Protraction Diagram No. 232  
Unit No. 58

Surveyed Areas  
 Surveyed Lines  
 Protracted Lines  
 Reliable Protracted Lines



BJC/bmg