

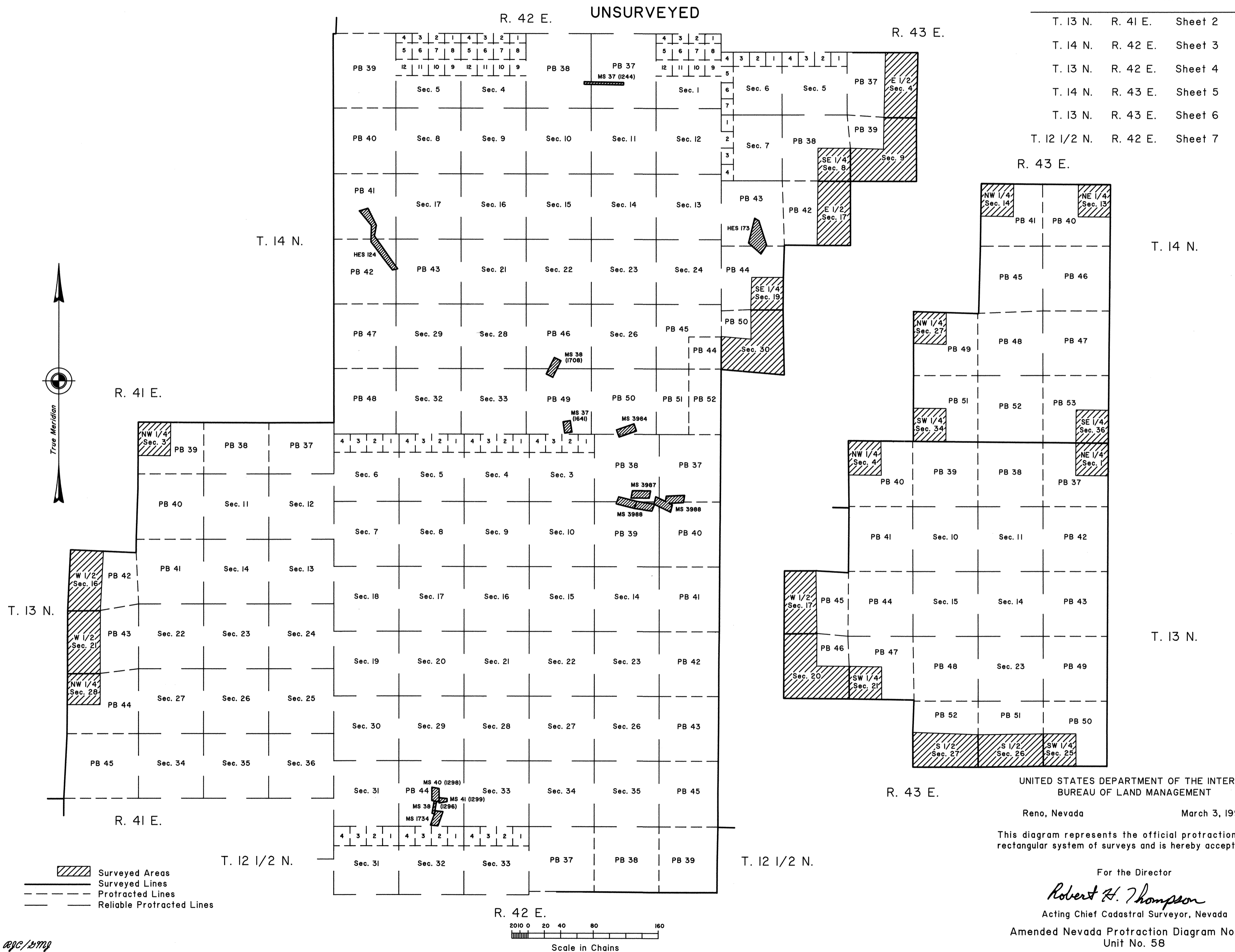
TOWNSHIPS 13 & 14 NORTH, RANGES 42 & 43 EAST; TOWNSHIP 13 NORTH, RANGE 41 EAST;  
TOWNSHIP 12 1/2 NORTH, RANGE 42 EAST, OF THE MOUNT DIABLO MERIDIAN, NEVADA

AMENDED NEVADA PROTRACTION DIAGRAM No. 231, UNIT No. 58

TOWNSHIP INDEX

T. 13 N.	R. 41 E.	Sheet 2
T. 14 N.	R. 42 E.	Sheet 3
T. 13 N.	R. 42 E.	Sheet 4
T. 14 N.	R. 43 E.	Sheet 5
T. 13 N.	R. 43 E.	Sheet 6
T. 12 1/2 N.	R. 42 E.	Sheet 7

OFFICIALLY FILED  
NEVADA STATE OFFICE  
at 10:00 AM on March 5, 1998



UNITED STATES DEPARTMENT OF THE INTERIOR  
BUREAU OF LAND MANAGEMENT

Reno, Nevada March 3, 1998

This diagram represents the official protraction of the rectangular system of surveys and is hereby accepted.

For the Director

*Robert H. Thompson*

Acting Chief Cadastral Surveyor, Nevada

Amended Nevada Protraction Diagram No. 231  
Unit No. 58