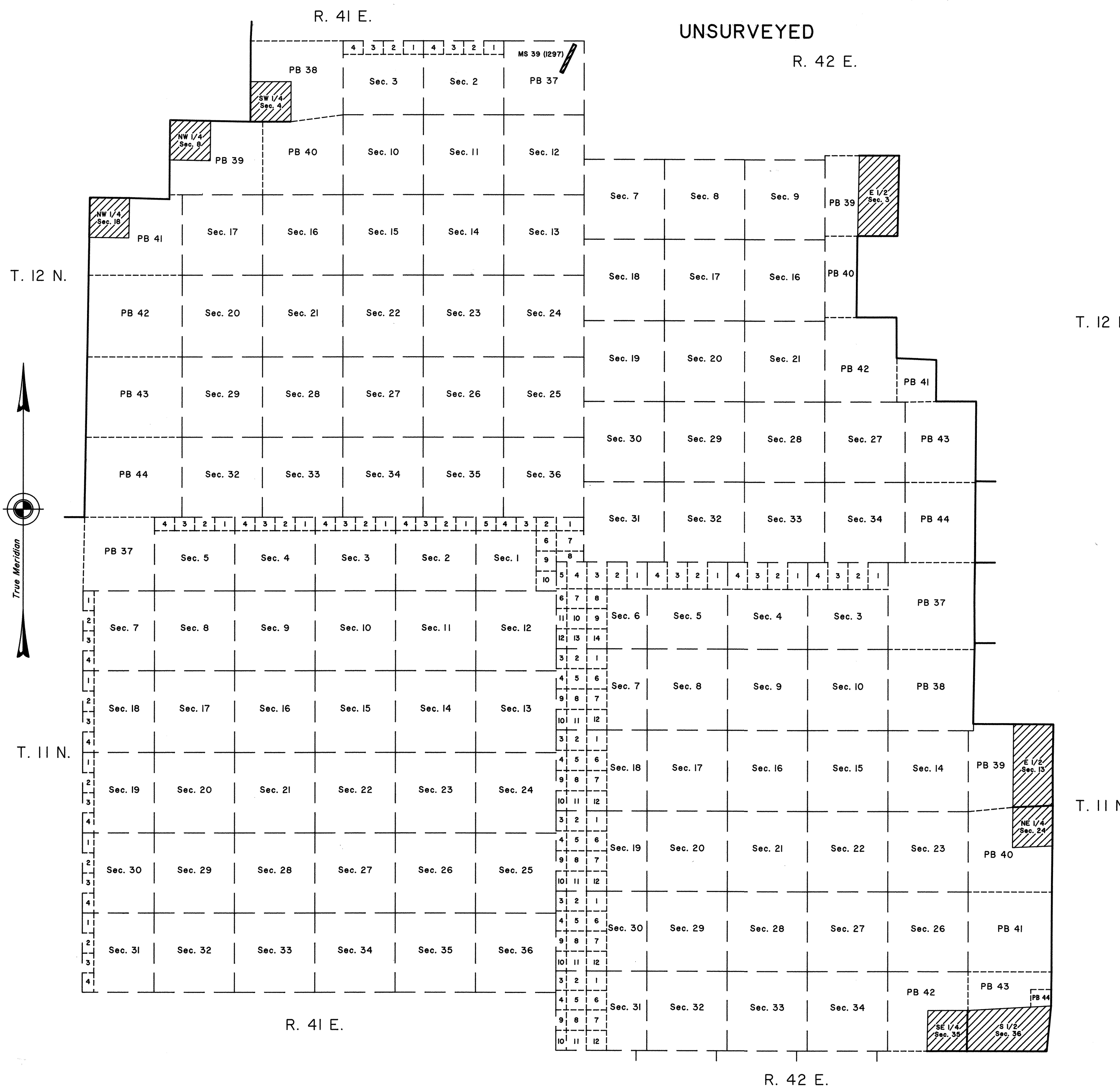


# TOWNSHIPS 11 & 12 NORTH, RANGES 41 & 42 EAST, OF THE MOUNT DIABLO MERIDIAN, NEVADA

## AMENDED NEVADA PROTRACTION DIAGRAM No. 230, UNIT No. 58



### TOWNSHIP INDEX

T. 12 N.	R. 41 E.	Sheet 2
T. 11 N.	R. 41 E.	Sheet 3
T. 12 N.	R. 42 E.	Sheet 4
T. 11 N.	R. 42 E.	Sheet 5

UNITED STATES DEPARTMENT OF THE INTERIOR  
BUREAU OF LAND MANAGEMENT

Reno, Nevada March 3, 1998

This diagram represents the official protraction of the rectangular system of surveys and is hereby accepted.

For the Director

*Robert H. Thompson*

Acting Chief Cadastral Surveyor, Nevada

Amended Nevada Protraction Diagram No. 230  
Unit No. 58

OFFICIALLY FILED  
NEVADA STATE OFFICE  
at 10:00 AM on March 5, 1998

BJC/bmg

# Ts.11 & 12N., Rs.41 & 42E., M.D.M.