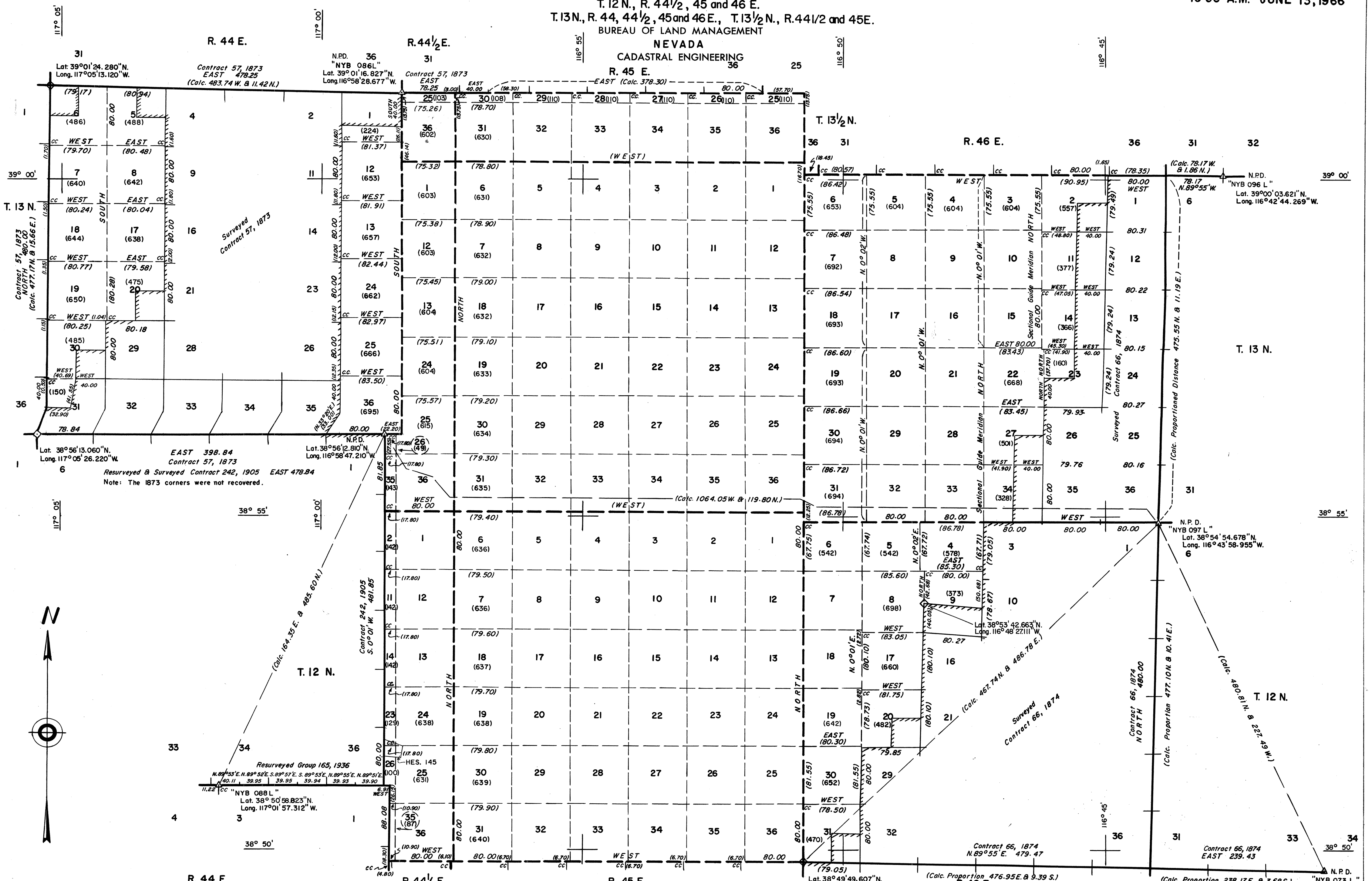


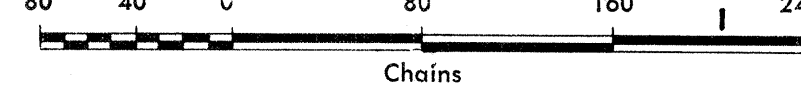
NEVADA PROTRACTION DIAGRAM
T. 12 N., R. 44 1/2, 45 and 46 E.
T. 13 N., R. 44, 44 1/2, 45 and 46 E., T. 13 1/2 N., R. 44 1/2 and 45 E.
BUREAU OF LAND MANAGEMENT



Note: All triangulation stations are U. S. C. & G. S. stations unless otherwise noted.

Except where shown otherwise, area of each unsurveyed section is 640 acres.

Data shown in parenthesis () are determinations made from existing information and subject to rectification.



- Lines Surveyed
- Lines Protracted
- Iron Post Control Point
- Tellurometer Control Point

UNITED STATES DEPARTMENT OF THE INTERIOR
BUREAU OF LAND MANAGEMENT

Washington, D.C., October 8, 1963

This diagram represents the official protraction of the rectangular system of survey and shows area of unsurveyed sections in T. 12 N., R. 44 1/2, 45 and 46 E. T. 13 N., R. 44, 44 1/2, 45 and 46 E., T. 13 1/2 N., R. 44 1/2 and 45 E. Mount Diablo Meridian, Nevada, and is hereby approved.

For The Director

Mark J. Sumner
Acting Chief, Division of Engineering

N. P. D. "NYB 073 L" Lat. 38° 49' 41.086" N. Long. 116° 40' 49.047" W.