

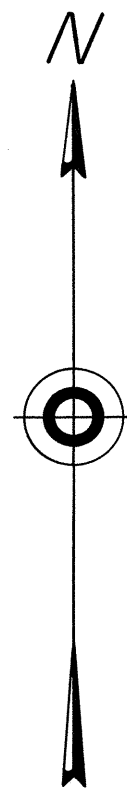
NEVADA PROTRACTION DIAGRAM

Ts. 5 and 6 N., R. 42 E.

BUREAU OF LAND MANAGEMENT
NEVADA
CADASTRAL ENGINEERING

OFFICIALLY FILED
NEVADA LAND OFFICE
10:00 A.M. JUNE 13, 1966

R. 42 E.



T. 6 N.

38°20'

T. 5 N.

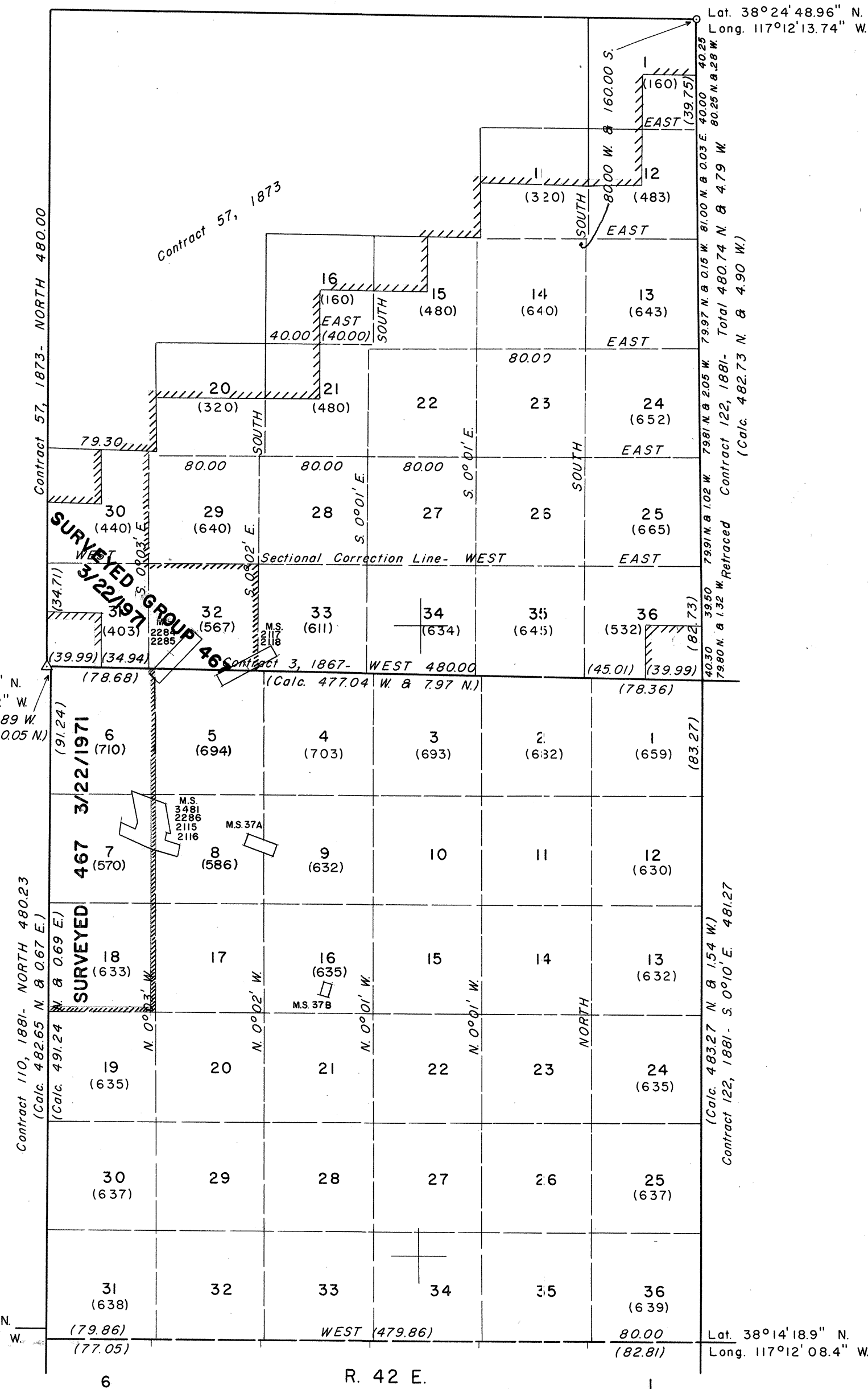
38°15'

Lot. 38°14'24.5" N.
Long. 117°18'45.2" W.

N.P.D. "LIBERTY"
Lot. 38°19'39.336" N.
Long. 117°18'47.042" W.

Lot. 38°24'48.96" N.
Long. 117°12'13.74" W.

Lot. 38°14'18.9" N.
Long. 117°12'08.4" W.



T. 6 N.

38°20'

T. 5 N.

38°15'

R. 42 E.

80 40 0 80 160 240

Chains

Lines Surveyed

Lines Protracted

Iron Post Control Point

Tellurometer Control Point

Note: All triangulation stations are U. S. C. & G. S. stations unless otherwise noted.

Except where shown otherwise, area of each unsurveyed section is 640 acres.

Data shown in parenthesis () are determinations made from existing information and subject to rectification.

All geodetic positions without a symbol are scaled from U.S.G.S. maps.

UNITED STATES DEPARTMENT OF THE INTERIOR
BUREAU OF LAND MANAGEMENT

Washington, D.C. May 20, 1964

This diagram represents the official protraction of the rectangular system of survey and shows area of unsurveyed sections in Ts. 5 and 6 N., R. 42 E.

Mount Diablo Meridian, Nevada, and is hereby approved.

For The Director

Chief, Division of Engineering

Nevada Protraction Diagram No. 214

Unit No. 71 B
71 A