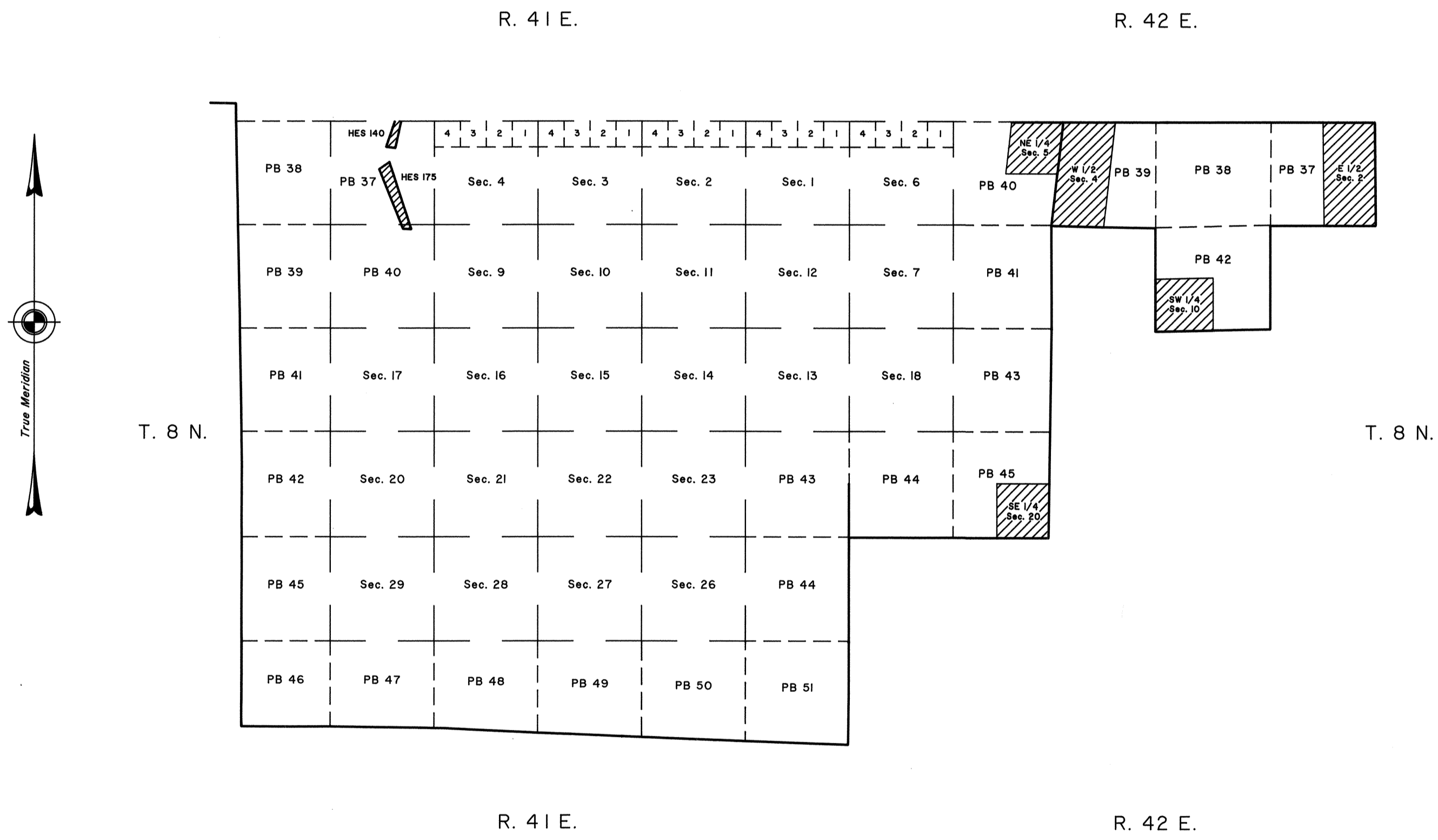


TOWNSHIPS 8 NORTH, RANGES 41 & 42 EAST, OF THE MOUNT DIABLO MERIDIAN, NEVADA
AMENDED NEVADA PROTRACTION DIAGRAM No. 212, UNIT No. 71
UNSURVEYED

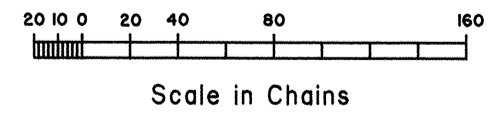
OFFICIALLY FILED
NEVADA STATE OFFICE
at 10:00 AM on March 5, 1998



TOWNSHIP INDEX

T. 8 N.	R. 41 E.	Sheet 2
T. 8 N.	R. 42 E.	Sheet 3

Surveved Areas
 Surveved Lines
 Protracted Lines
 Reliable Protracted Lines



UNITED STATES DEPARTMENT OF THE INTERIOR
BUREAU OF LAND MANAGEMENT
Reno, Nevada March 3, 1998
This diagram represents the official protraction of the rectangular system of surveys and is hereby accepted.

For the Director
Robert H. Thompson
Acting Chief Cadastral Surveyor, Nevada

Amended Nevada Protraction Diagram No. 212
Unit No. 71

BPC/BMG