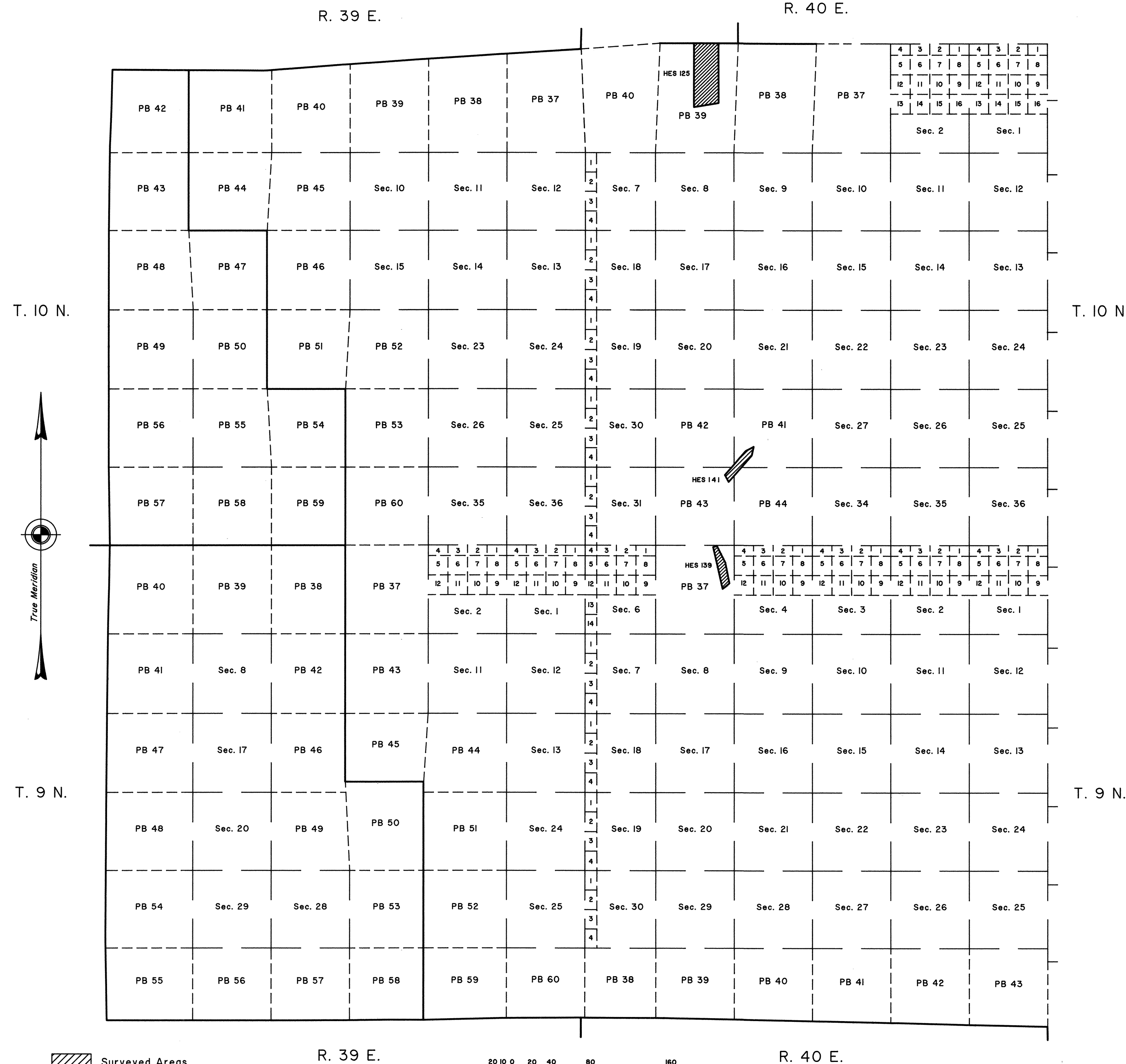


# TOWNSHIPS 9 & 10 NORTH, RANGES 39 & 40 EAST, OF THE MOUNT DIABLO MERIDIAN, NEVADA

## AMENDED NEVADA PROTRACTION DIAGRAM No. 211, UNIT No. 71

### UNSURVEYED



#### TOWNSHIP INDEX

T. 10 N.	R. 39 E.	Sheet 2
T. 9 N.	R. 39 E.	Sheet 3
T. 10 N.	R. 40 E.	Sheet 4
T. 9 N.	R. 40 E.	Sheet 5

UNITED STATES DEPARTMENT OF THE INTERIOR  
BUREAU OF LAND MANAGEMENT

Reno, Nevada March 3, 1998

This diagram represents the official protraction of the rectangular system of surveys and is hereby accepted.

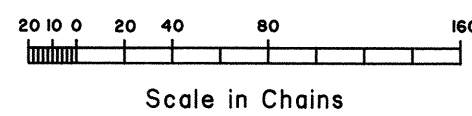
For the Director

*Robert H. Thompson*

Acting Chief Cadastral Surveyor, Nevada

Amended Nevada Protraction Diagram No. 211  
Unit No. 71

- Surveyed Areas
- Surveyed Lines
- Protracted Lines
- Reliable Protracted Lines



BJC/BJG/BJG

OFFICIALLY FILED  
NEVADA STATE OFFICE  
at 10:00 AM on March 5, 1998