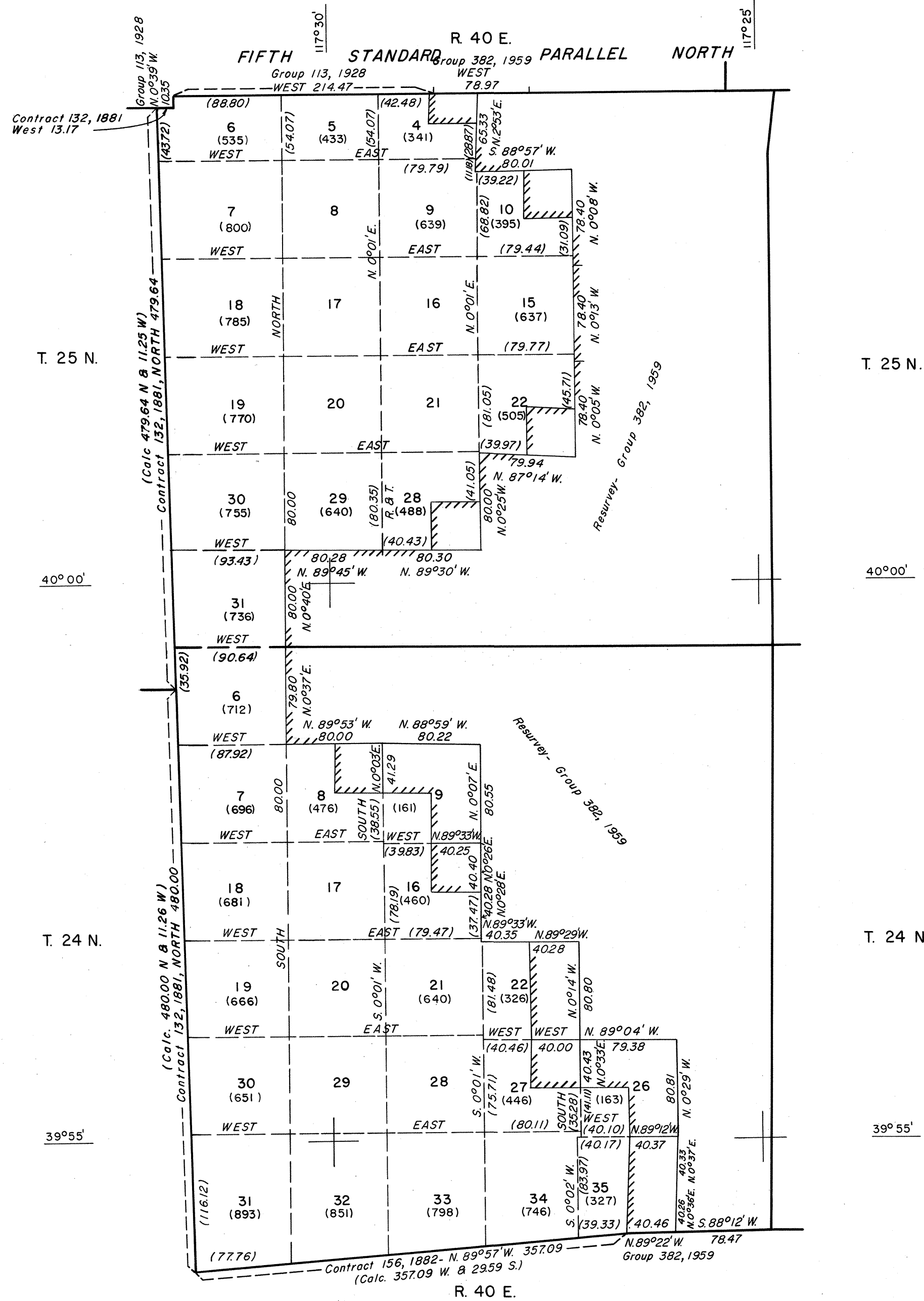


NEVADA PROTRACTION DIAGRAM

Ts. 24 & 25 N., R. 40 E.

BUREAU OF LAND MANAGEMENT  
NEVADA  
CADASTRAL ENGINEERING

OFFICIALLY FILED  
NEVADA LAND OFFICE  
10:00 A.M. JUNE 13, 1966

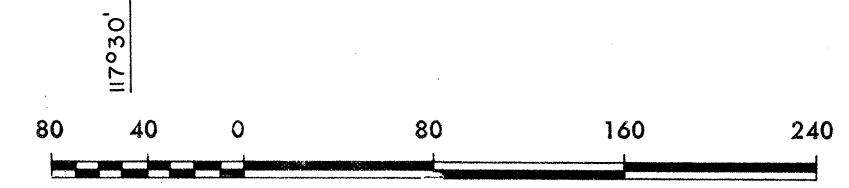


NOTE: Correction of west boundary of townships and areas of west sections made 11/16/1967

Note: All triangulation stations are U. S. C. & G. S. stations unless otherwise noted.

Except where shown otherwise, area of each unsurveyed section is 640 acres.

Data shown in parenthesis ( ) are determinations made from existing information and subject to rectification.



- Lines Surveyed
- Lines Protracted
- Iron Post Control Point
- Tellurometer Control Point

UNITED STATES DEPARTMENT OF THE INTERIOR  
BUREAU OF LAND MANAGEMENT  
Washington, D.C. October 26, 1964  
This diagram represents the official protraction of the rectangular system of survey and shows area of unsurveyed sections in Ts. 24 & 25 N., R. 40 E. Mount Diablo Meridian, Nevada, and is hereby approved.  
For The Director

Chief, Division of Engineering

Nevada Protraction Diagram No. 205  
Unit No. 37