

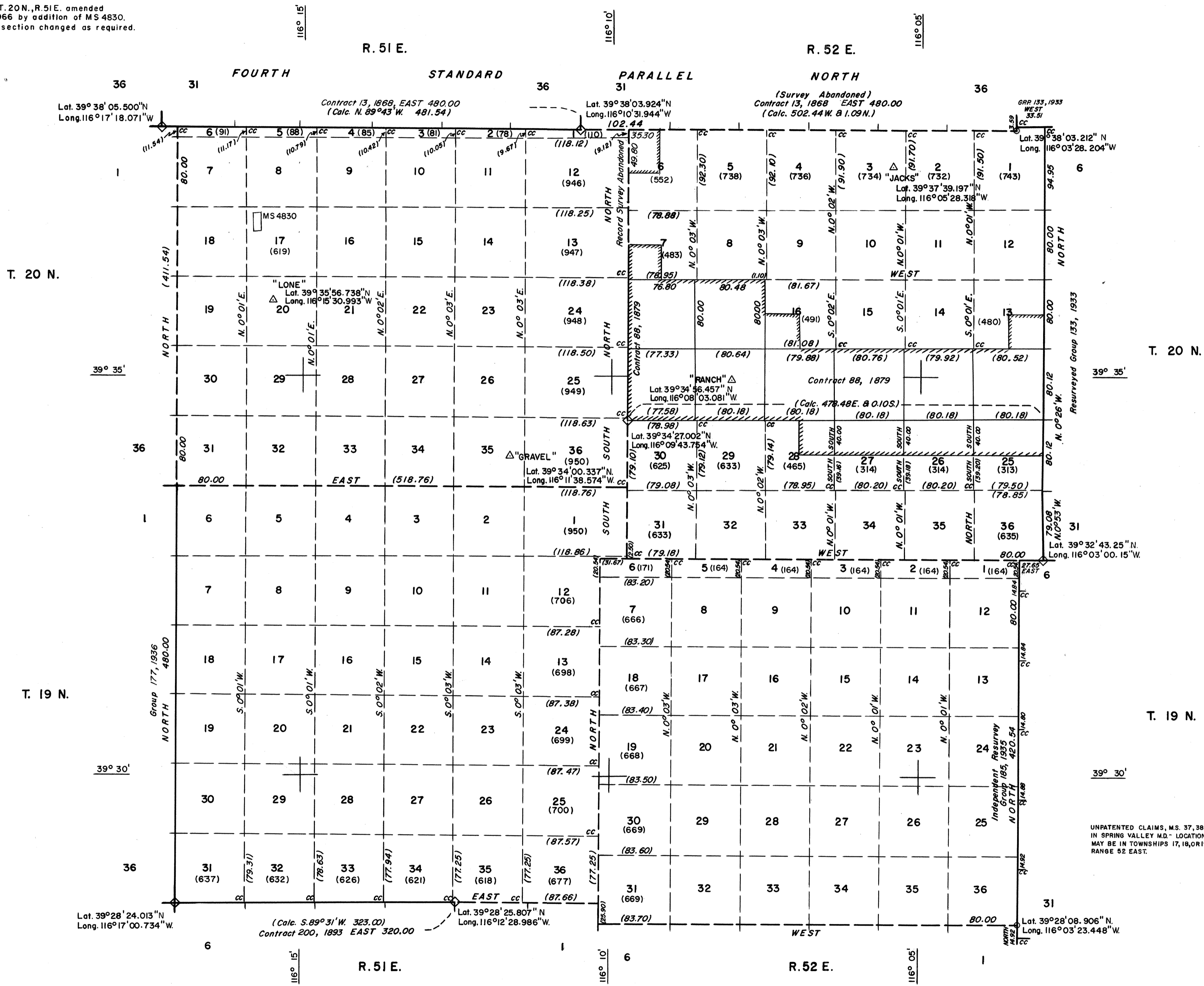
NEVADA PROTRACTION DIAGRAM

T. 19 and 20 N., R. 51 and 52 E.

BUREAU OF LAND MANAGEMENT
NEVADA
CADASTRAL ENGINEERING

OFFICIALLY FILED
NEVADA LAND OFFICE
10:00 A.M. JUNE 13, 1966

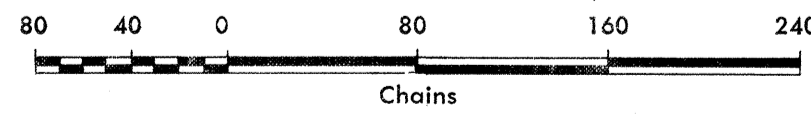
Note: Sec 17, T. 20 N., R. 51 E. amended
May 5, 1966 by addition of MS 4830.
Area of section changed as required.



Note: All triangulation stations are U. S. C. & G. S. stations unless otherwise noted.

Except where shown otherwise, area of each unsurveyed section is 640 acres.

Data shown in parenthesis () are determinations made from existing information and subject to rectification.



- Lines Surveyed
- Lines Protracted
- Iron Post Control Point
- Tellurometer Control Point

UNITED STATES DEPARTMENT OF THE INTERIOR
BUREAU OF LAND MANAGEMENT

Washington, D.C. January 13, 1964

This diagram represents the official protraction of the rectangular system of survey and shows area of unsurveyed sections in T. 19 and 20 N., R. 51 and 52 E. Mount Diablo Meridian, Nevada, and is hereby approved.

For The Director

Chief, Division of Engineering