

NEVADA PROTRACTION DIAGRAM

T. 5 S., R. 61 and 62 E.
T. 6 S., R. 60, 61 and 62 E.
BUREAU OF LAND MANAGEMENT
NEVADA
CADASTRAL ENGINEERING
R. 61 E.

OFFICIALLY FILED
NEVADA LAND OFFICE
10:00 A.M. JUNE 13, 1966

R. 62 E.

FIRST STANDARD PARALLEL SOUTH

Contract 125, 1881 Retraced EAST 400.00 (Calc. 400.00 W. & 1.53 S.)
Group 355, 1953 N. 89° 24' E. 79.98 4.03
Contract 125, 1881 Retraced EAST 440.00
Grp. 422, 1965 5.89° 33' W. 78.57
Grp. 355, 1953 N. 89° 24' E. 79.98 4.03

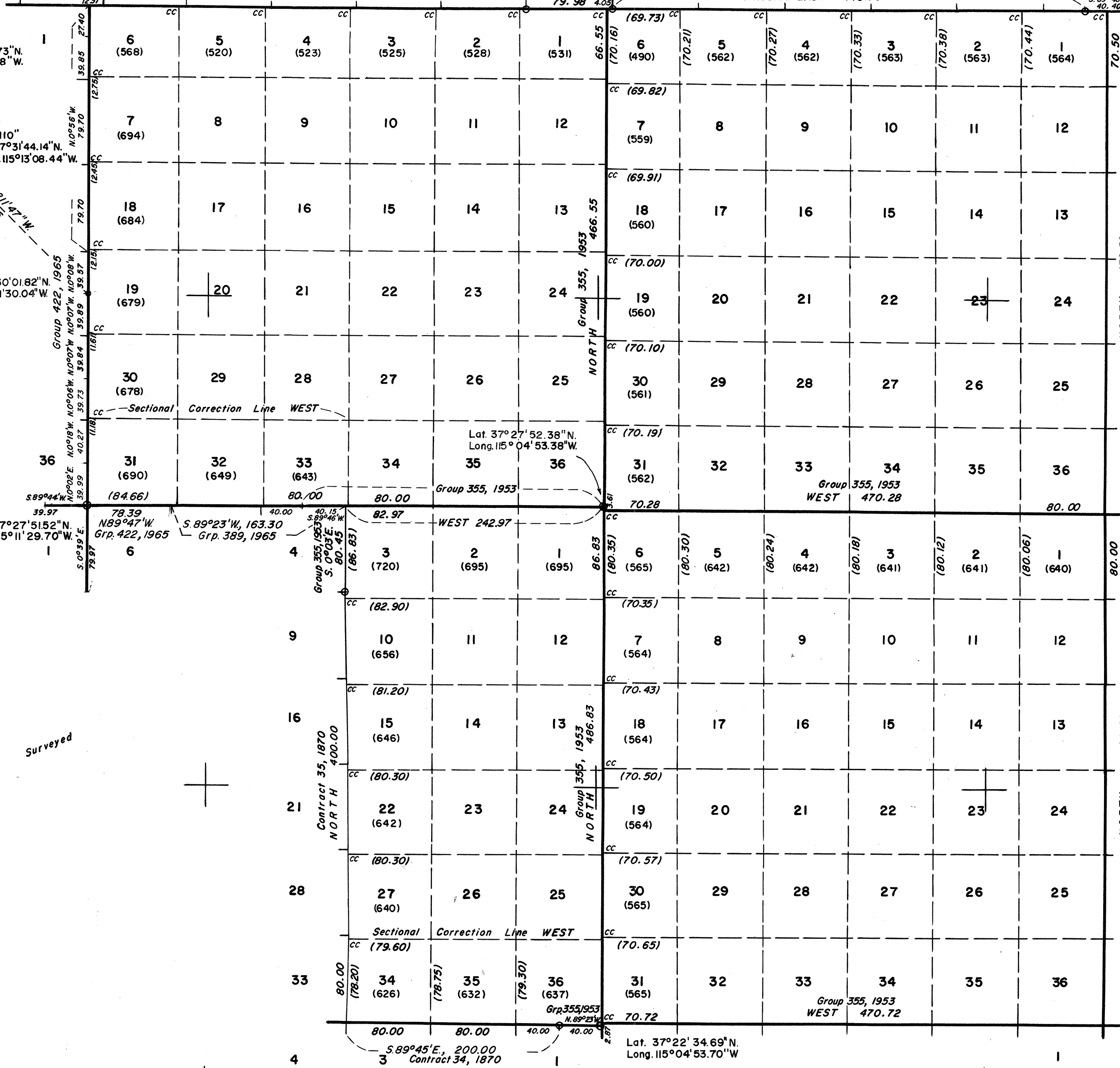
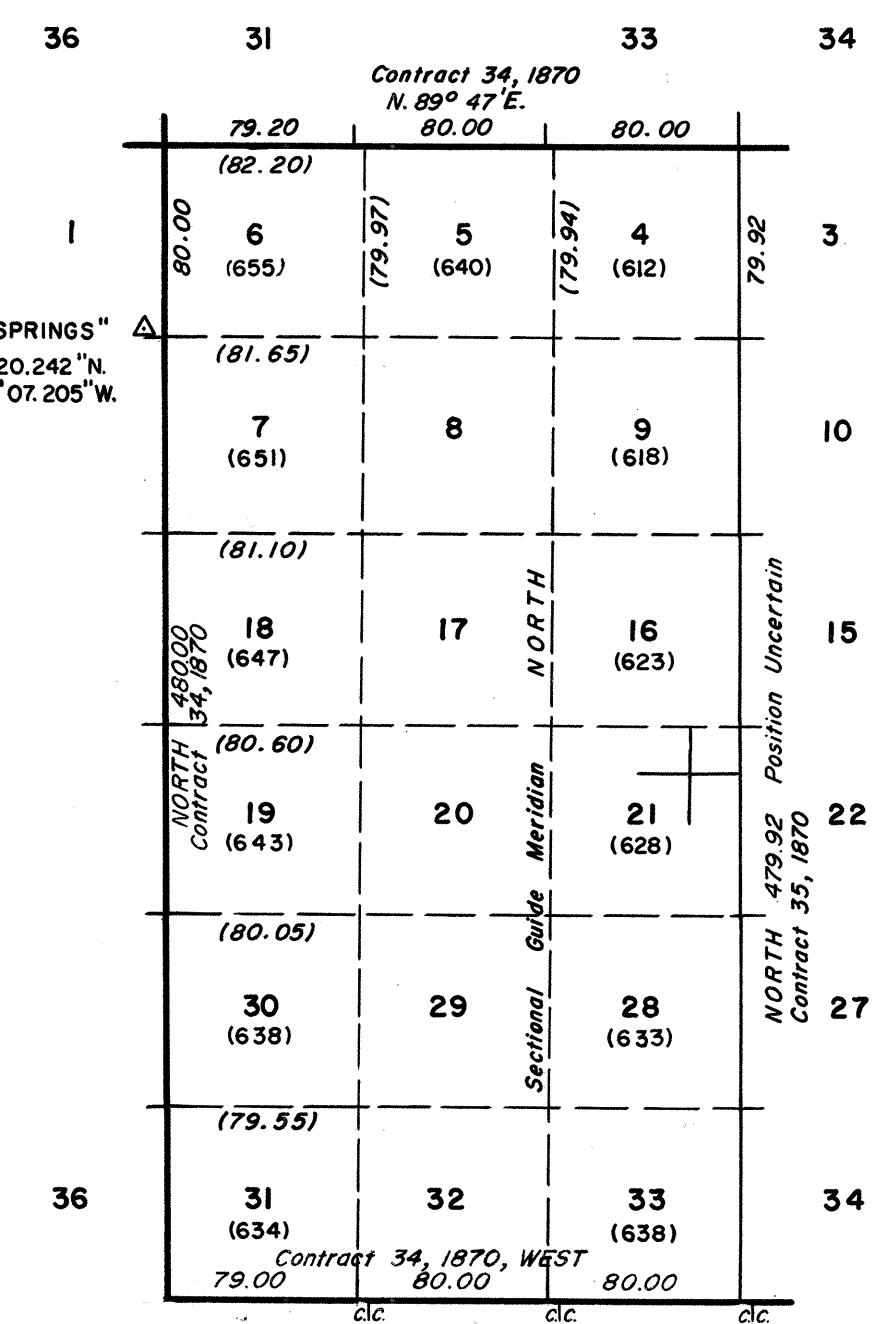
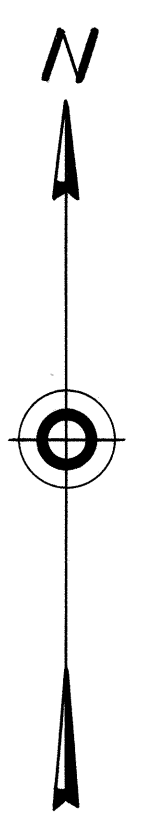
"BM A-58"
Lat. 37° 31' 57.123" N.
Long. 115° 14' 01.513" W.
"CRYSTAL SPRINGS"
Lat. 37° 31' 53.246" N.
Long. 115° 14' 01.073" W.
"HCP 110"
Lat. 37° 31' 44.14" N.
Long. 115° 13' 08.44" W.

Lat. 37° 30' 01.82" N.
Long. 115° 11' 30.04" W.

Lat. 37° 27' 52.38" N.
Long. 115° 04' 53.38" W.

Lat. 37° 27' 51.52" N.
Long. 115° 11' 29.70" W.

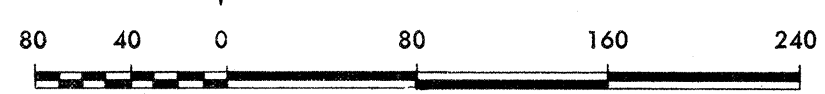
Lat. 37° 22' 34.69" N.
Long. 115° 04' 53.70" W.



Note: All triangulation stations are U. S. C. & G. S. stations unless otherwise noted.

Except where shown otherwise, area of each unsurveyed section is 640 acres.

Data shown in parenthesis () are determinations made from existing information and subject to rectification.



- Lines Surveyed
- Lines Protracted
- Iron Post Control Point
- Tellurometer Control Point

UNITED STATES DEPARTMENT OF THE INTERIOR
BUREAU OF LAND MANAGEMENT

Washington, D.C. February 3, 1964

This diagram represents the official protraction of the rectangular system of survey and shows area of unsurveyed sections in T. 5 S., R. 61 and 62 E., T. 6 S., R. 60, 61 and 62 E. Mount Diablo Meridian, Nevada, and is hereby approved.

For The Director