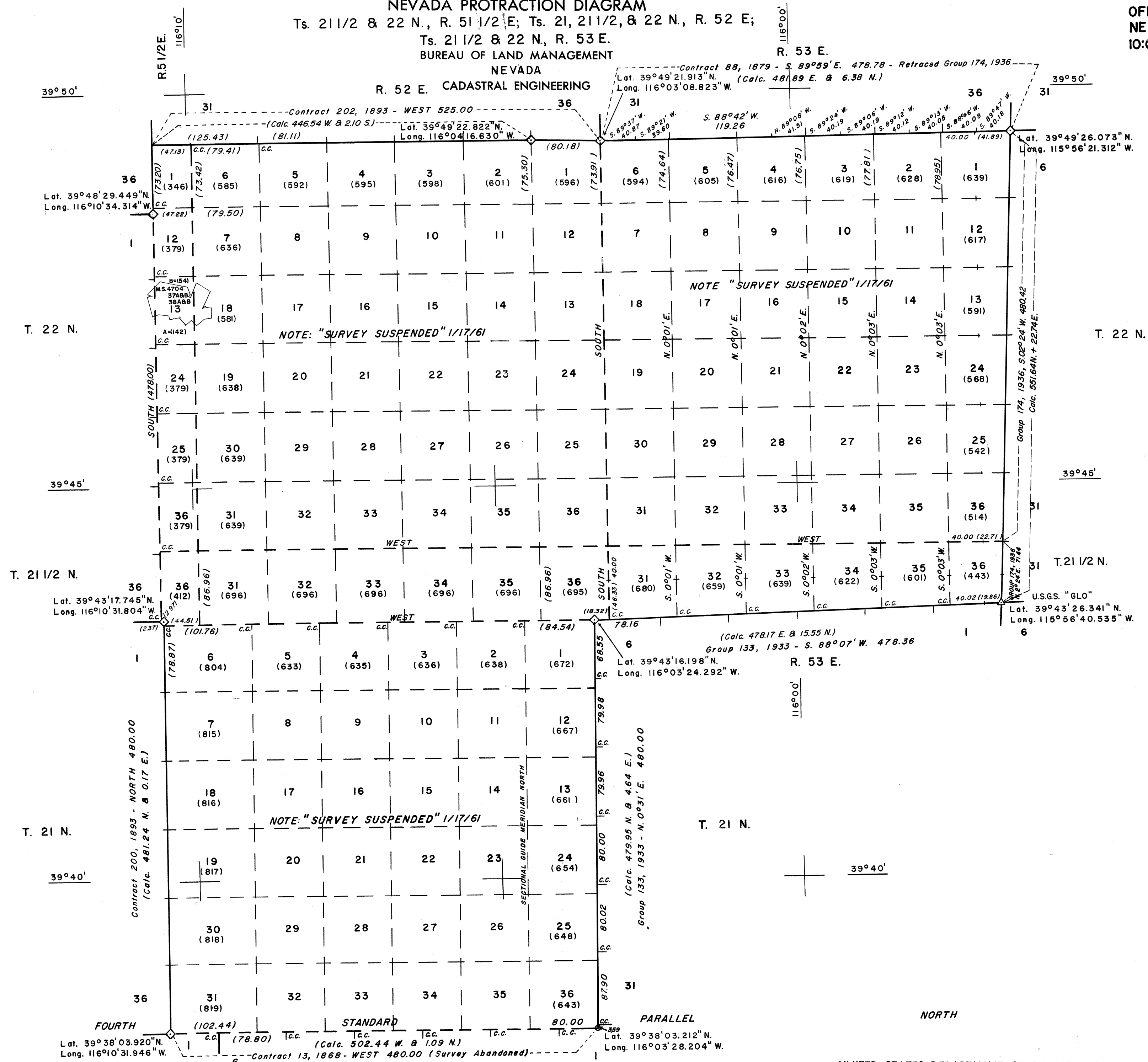
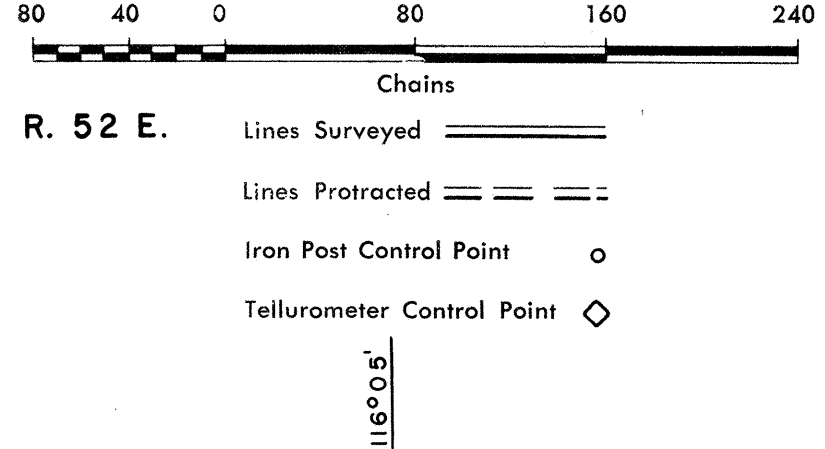


NEVADA PROTRACTION DIAGRAM
 Ts. 21 1/2 & 22 N., R. 51 1/2 E.; Ts. 21, 21 1/2, & 22 N., R. 52 E.;
 Ts. 21 1/2 & 22 N., R. 53 E.
 BUREAU OF LAND MANAGEMENT
 NEVADA
 R. 52 E. CADASTRAL ENGINEERING

OFFICIALLY FILED
 NEVADA LAND OFFICE
 10:00 A.M. MAY 17, 1965



Note: All triangulation stations are U. S. C. & G. S. stations unless otherwise noted.
 Except where shown otherwise, area of each unsurveyed section is 640 acres.
 Data shown in parenthesis () are determinations made from existing information and subject to rectification.



UNITED STATES DEPARTMENT OF THE INTERIOR
 BUREAU OF LAND MANAGEMENT
 Washington, D.C., January 13, 1964
 This diagram represents the official protraction of the rectangular system of survey and shows area of unsurveyed sections in Ts. 21 1/2 & 22 N., R. 51 1/2 E.; Ts. 21, 21 1/2, & 22 N., R. 52 E.; Mount Diablo Meridian, Nevada, and is hereby approved. Ts. 21 1/2 & 22 N., R. 53 E.

For The Director

 Chief, Division of Engineering