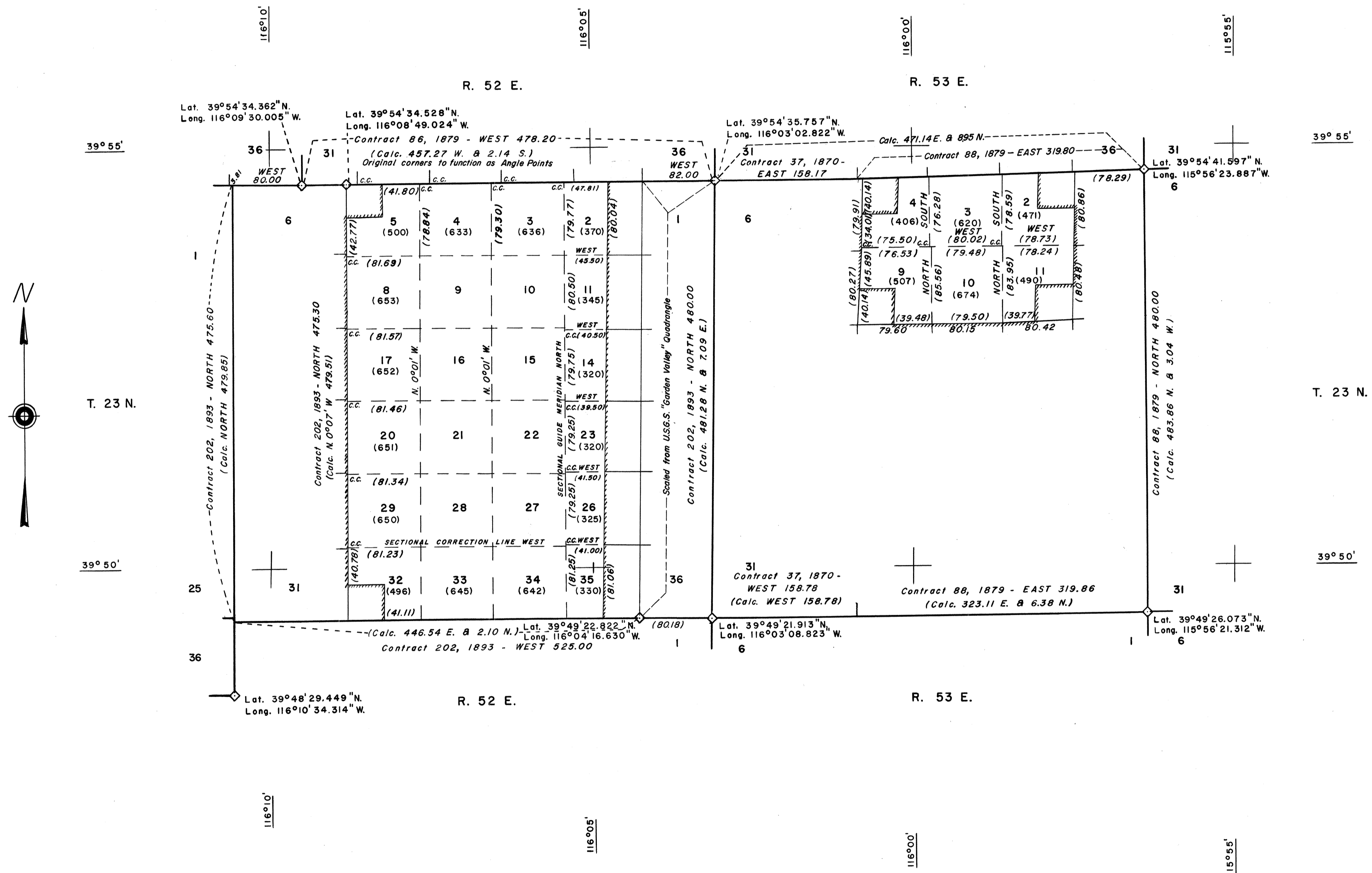


NEVADA PROTRACTION DIAGRAM

T. 23 N., R. 52 & 53 E.

BUREAU OF LAND MANAGEMENT  
NEVADA  
CADASTRAL ENGINEERING

OFFICIALLY FILED  
NEVADA LAND OFFICE  
10:00 A.M. MAY 17, 1965



Note: All triangulation stations are U. S. C. & G. S. stations unless otherwise noted.

Except where shown otherwise, area of each unsurveyed section is 640 acres.

Data shown in parenthesis ( ) are determinations made from existing information and subject to rectification.

