

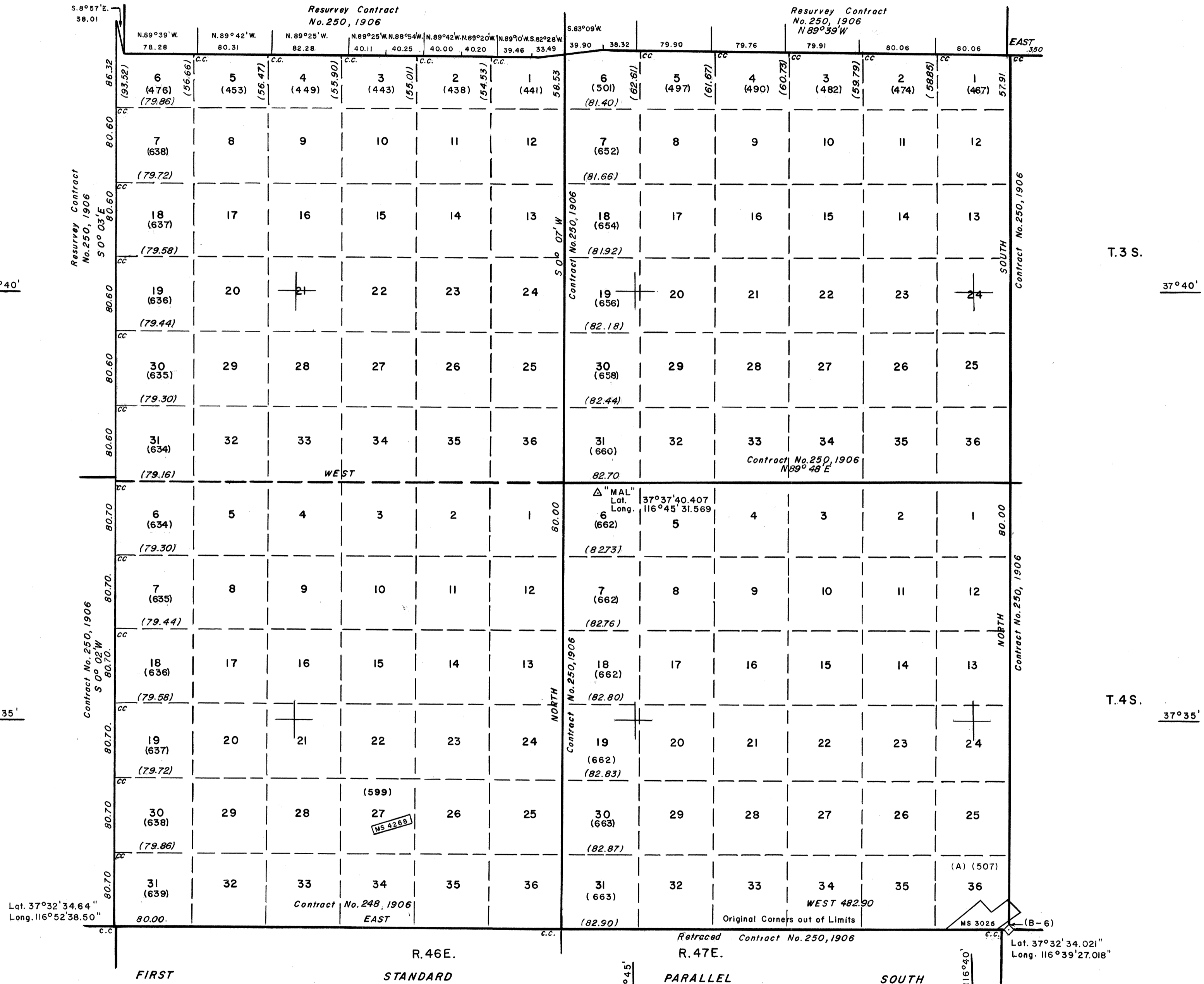
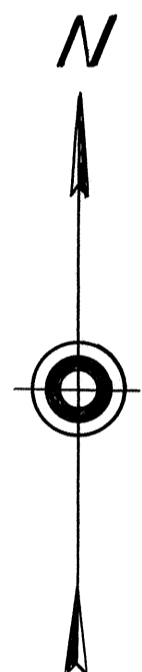
NEVADA PROTRACTION DIAGRAM

Ts. 3 & 4 S., Rs. 46 & 47 E.

BUREAU OF LAND MANAGEMENT
NEVADA
CADASTRAL ENGINEERING

R. 46 E.

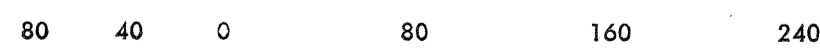
R. 47 E.



Note: All triangulation stations are U. S. C. & G. S. stations unless otherwise noted.

Except where shown otherwise, area of each unsurveyed section is 640 acres.

Data shown in parenthesis () are determinations made from existing information and subject to rectification.



- Lines Surveyed
- Lines Protracted
- Iron Post Control Point
- Tellurometer Control Point

UNITED STATES DEPARTMENT OF THE INTERIOR
BUREAU OF LAND MANAGEMENT

Washington, D. C. October 16, 1962

This diagram represents the official protraction of the rectangular system of survey and shows area of unsurveyed sections in Ts. 3 & 4 S., Rs. 46 & 47 E.

Mount Diablo Meridian, Nevada, and is hereby approved.

For The Director

E. J. Huntington
Chief, Division of Engineering