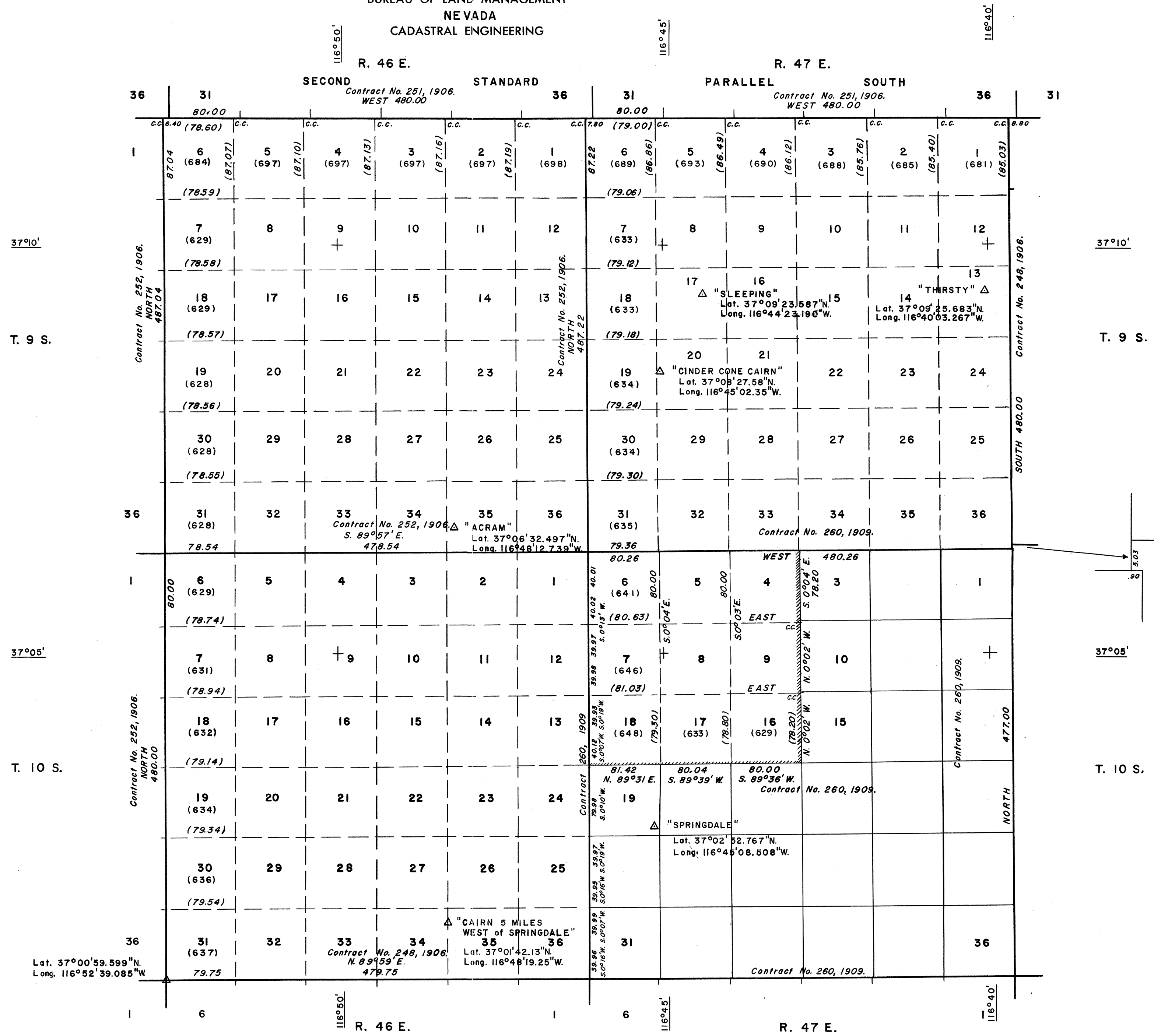


NEVADA PROTRACTION DIAGRAM

T. 9 & 10 S., R. 46 & 47 E.

BUREAU OF LAND MANAGEMENT  
NEVADA  
CADASTRAL ENGINEERING



Note: All triangulation stations are U. S. C. & G. S. stations unless otherwise noted.

Except where shown otherwise, area of each unsurveyed section is 640 acres.

Data shown in parenthesis ( ) are determinations made from existing information and subject to rectification.

80 40 0 80 160 240

Chains

Lines Surveyed

Lines Protracted

Iron Post Control Point

Tellurometer Control Point

UNITED STATES DEPARTMENT OF THE INTERIOR

BUREAU OF LAND MANAGEMENT

Washington, D.C. October 5, 1962

This diagram represents the official protraction of the rectangular system of survey and shows area of unsurveyed sections in T. 9 & 10 S., R. 46 & 47 E. Mount Diablo Meridian, Nevada, and is hereby approved.

For The Director

Chief, Division of Engineering