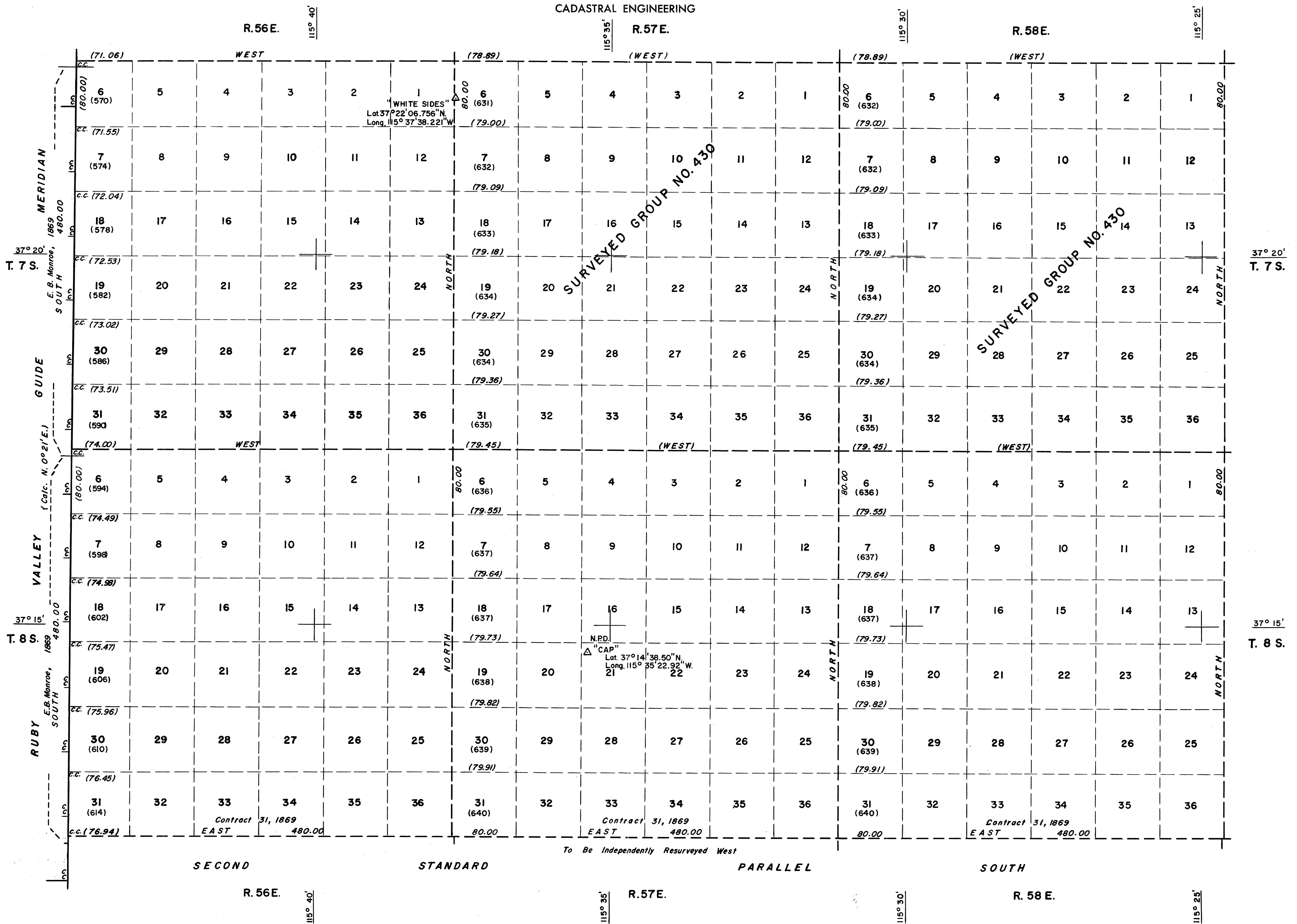


NEVADA PROTRACTION DIAGRAM

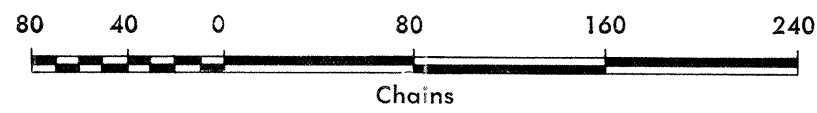
T. 7 and 8 S., R. 56, 57 and 58 E.  
 BUREAU OF LAND MANAGEMENT  
 NEVADA  
 CADASTRAL ENGINEERING



Note: All triangulation stations are U. S. C. & G. S. stations unless otherwise noted.

Except where shown otherwise, area of each unsurveyed section is 640 acres.

Data shown in parenthesis ( ) are determinations made from existing information and subject to rectification.



- Lines Surveyed
- Lines Protracted
- Iron Post Control Point
- Tellurometer Control Point

UNITED STATES DEPARTMENT OF THE INTERIOR

BUREAU OF LAND MANAGEMENT

Washington, D.C. October 1, 1962

This diagram represents the official protraction of the rectangular system of survey and shows area of unsurveyed sections in T. 7 and 8 S., R. 56, 57, and 58 E. Mount Diablo Meridian, Nevada, and is hereby approved.

For The Director

*E. E. Remington*  
 Chief, Division of Engineering