

NEVADA PROTRACTION DIAGRAM

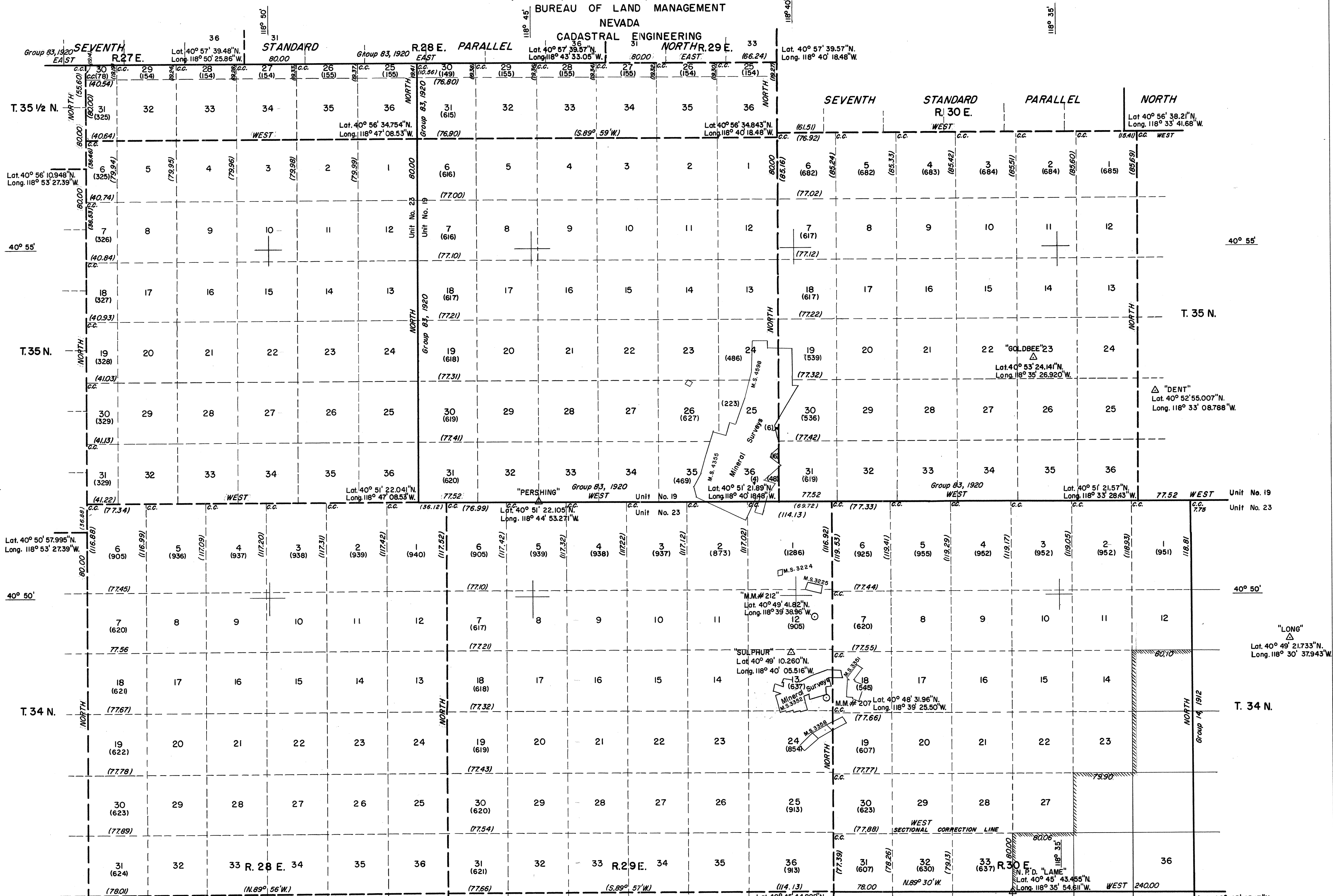
Ts. 34 & 35 N., Rs. 28, 29 & 30 E., Ts. 35 1/2 N., Rs. 28 & 29 E.

BUREAU OF LAND MANAGEMENT

NEVADA

CADASTRAL ENGINEERING

NORTH R. 29 E.



Lat. 40° 45' 45.039" N.
Long. 118° 53' 27.39" W.

Note: All triangulation stations are U.S. C.&G.S. stations unless otherwise noted.

Except where shown otherwise, area of each unsurveyed section is 640 acres.

Data shown in parenthesis () are determinations made from existing information and subject to rectification.

80 40 0 80 160

Chains

- Lines Surveyed
- Lines Protracted
- Iron Post Control Point
- Tellurometer Control Point

UNITED STATES DEPARTMENT OF THE INTERIOR
BUREAU OF LAND MANAGEMENT

Washington, D.C. May 16, 1962

This diagram represents the official protraction of the rectangular system of survey and shows area of unsurveyed sections in Ts. 34 & 35 N., Rs. 28, 29 & 30 E., Ts. 35 1/2 N., Rs. 28 & 29 E., Mount Diablo Meridian, Nevada, and is hereby approved

For The Director

Ed. King
Chief, Division of Engineering

Lat. 40° 45' 43.17" N.
Long. 118° 32' 28.21" W.