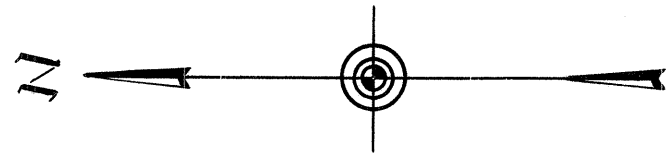


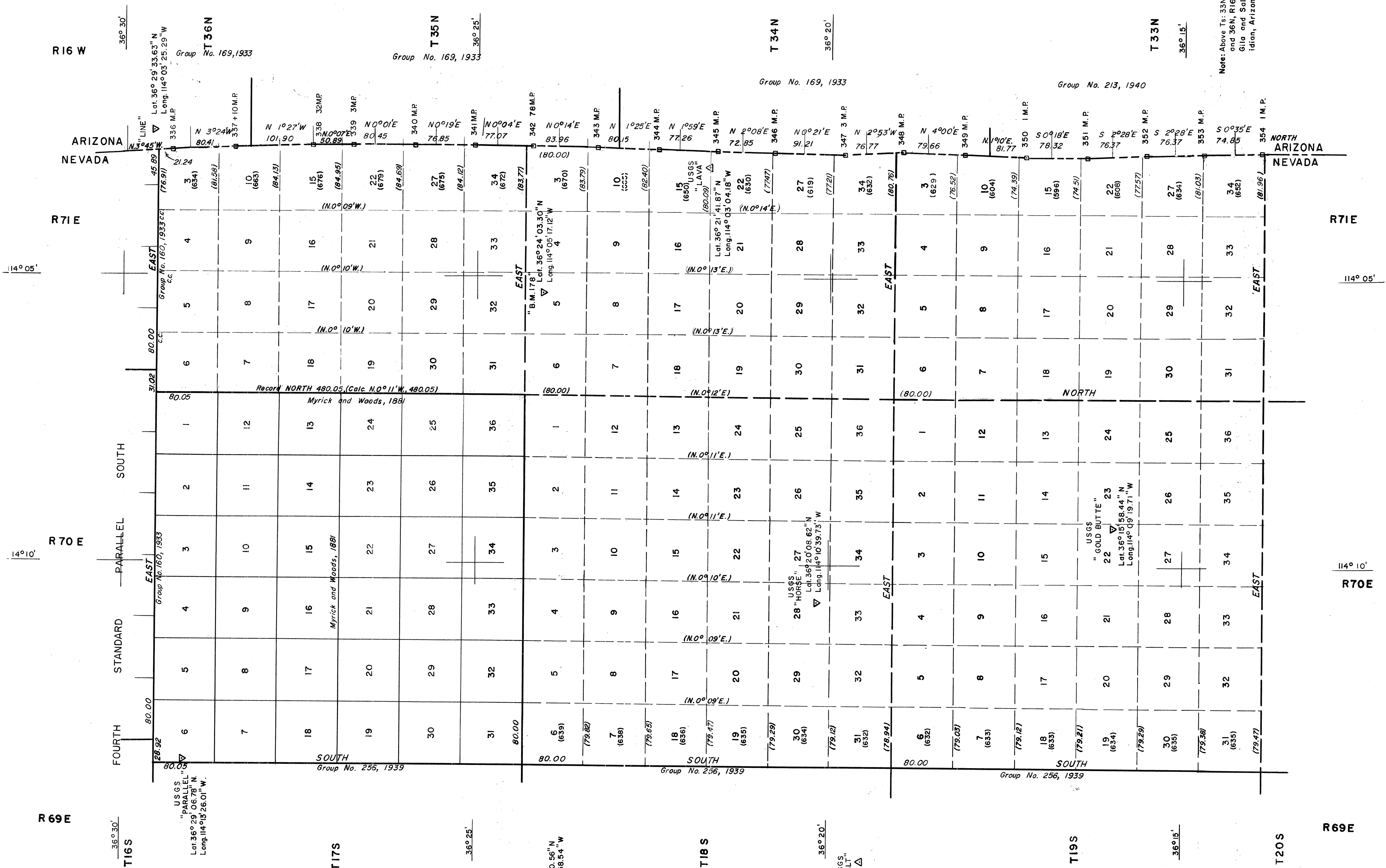
NEVADA PROTRACTION DIAGRAM

Tps. 18 and 19S., R. 70E.; Tps. 17, 18, and 19S., R. 71E

BUREAU OF LAND MANAGEMENT
NEVADA
CADASTRAL ENGINEERING



Note: Above Tps. 33N, 34N, 35N,
and 36N, R16W are on the
Gila and Salt River Mer-
idian, Arizona



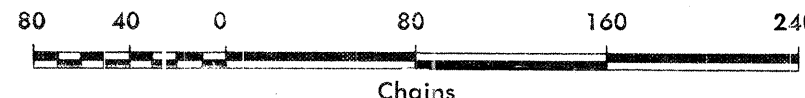
Note: All triangulation stations are U. S. C. & G. S. stations unless otherwise noted.

Except where shown otherwise, area of each unsurveyed section is 640 acres.

Data shown in parenthesis () are determinations made from existing information and subject to rectification.

USGS
"ARM"

Lat. 36° 24' 00.56" N
Long. 114° 15' 58.54" W



- Lines Surveyed
- Lines Protracted
- Iron Post Control Point
- Tellurometer Control Point

USGS
"SALT"
Lat. 36° 19' 31.96" N
Long. 114° 15' 10.97" W

UNITED STATES DEPARTMENT OF THE INTERIOR
BUREAU OF LAND MANAGEMENT

Washington, D.C. March 23, 1962

This diagram represents the official protraction of the rectangular system of survey and shows area of unsurveyed sections in Tps. 18 and 19S., R. 70E.; Tps. 17, 18, and 19S., R. 71E. Mount Diablo Meridian, Nevada, and is hereby approved.

For The Director

E. J. Livingston
Chief, Division of Engineering