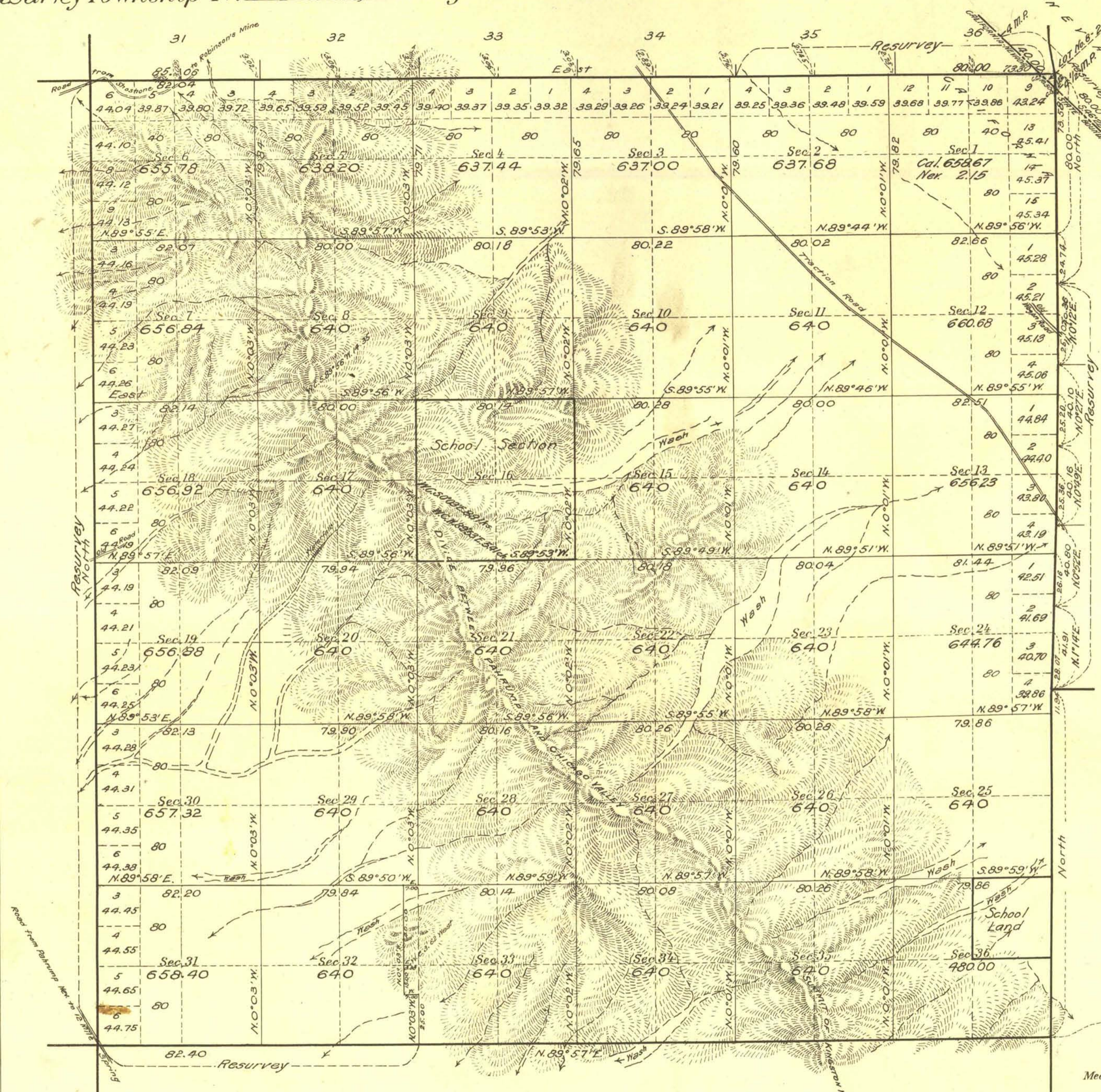


Survey and Resurvey Township No. 23 North, Range No. 8 East, San Bernardino Meridian, California and Nevada.



19  
20  
21  
22  
23  
24  
25  
26  
27  
28  
29  
30  
31  
T. 23 N., R. 8 E.

Note: Portions of this township were surveyed in 1857 and 1878. See plats approved March 29, 1888 and May 12, 1880. Resurvey was authorized by the First Assistant Secretary of the Interior February 15, 1915, under the provisions of the Act of March 3, 1909, (35 Stat. 845)

Area:  
Resurveyed 7,706.03 Acs.  
New 15,488.92 "

Areas in Acres	
Public Land, Calif.	22,392.80
Public Land, Nev.	2.15
Indian Allotments	
Mineral Claims	
Water Surface	
School Land	800.00
Total Area	23,194.95

Lat. 36° 04' 30" N.  
Long. 116° 04' W.

Scale 40 Chains to an inch  
Mean Magnetic Declination.

Surveys Designated	By Whom Surveyed	Group	Amount of Surveys		When Surveyed		
			Mls.	chs.	Began	Completed	
N. bdy. Tp., sur. and resur.	Gay Redwine,	No. Date of Instructions	6	05	06	Mar. 3, 1917	Mar. 5, 1917
E. bdy. Tp., sur. and resur.	U.S. Surveyor	" 1916	6	00	01	Feb. 6, "	" 3, "
W. bdy. Tp., resur.	"	"	See plat T. 23 N., R. 7 E.			S. B. M.	
S. bdy. Tp., sur. and resur.	and	and	See plat T. 22 N., R. 8 E.			S. B. M.	
Subdivisions, sur. & resur.	"	"	60	17	46	Feb. 8, 1917	Mar. 27, 1917
Connections	Dupree R. Averill,	" November 29	43	85.5		Mar. 3, "	" 24, "
Cal.-Nev. State Bdy.	U.S. Transitman	" 1916	58	40		" "	" 3 "

Survey and Resurvey  
The above map of Township No. 23 North, Range No. 8 East of the San Bernardino Meridian, California and Nevada is strictly conformable to the field notes of the survey thereof on file in this office, which have been examined and approved  
U. S. Surveyor General's Offices  
San Francisco, California,  
and Reno, Nevada  
March 23, 1920

*John H. Moore*  
U.S. Surveyor General for California

*John B. Sullivan*  
U.S. Surveyor General for Nevada

Orig. T. D. B. - H. G.  
F. E. Camp