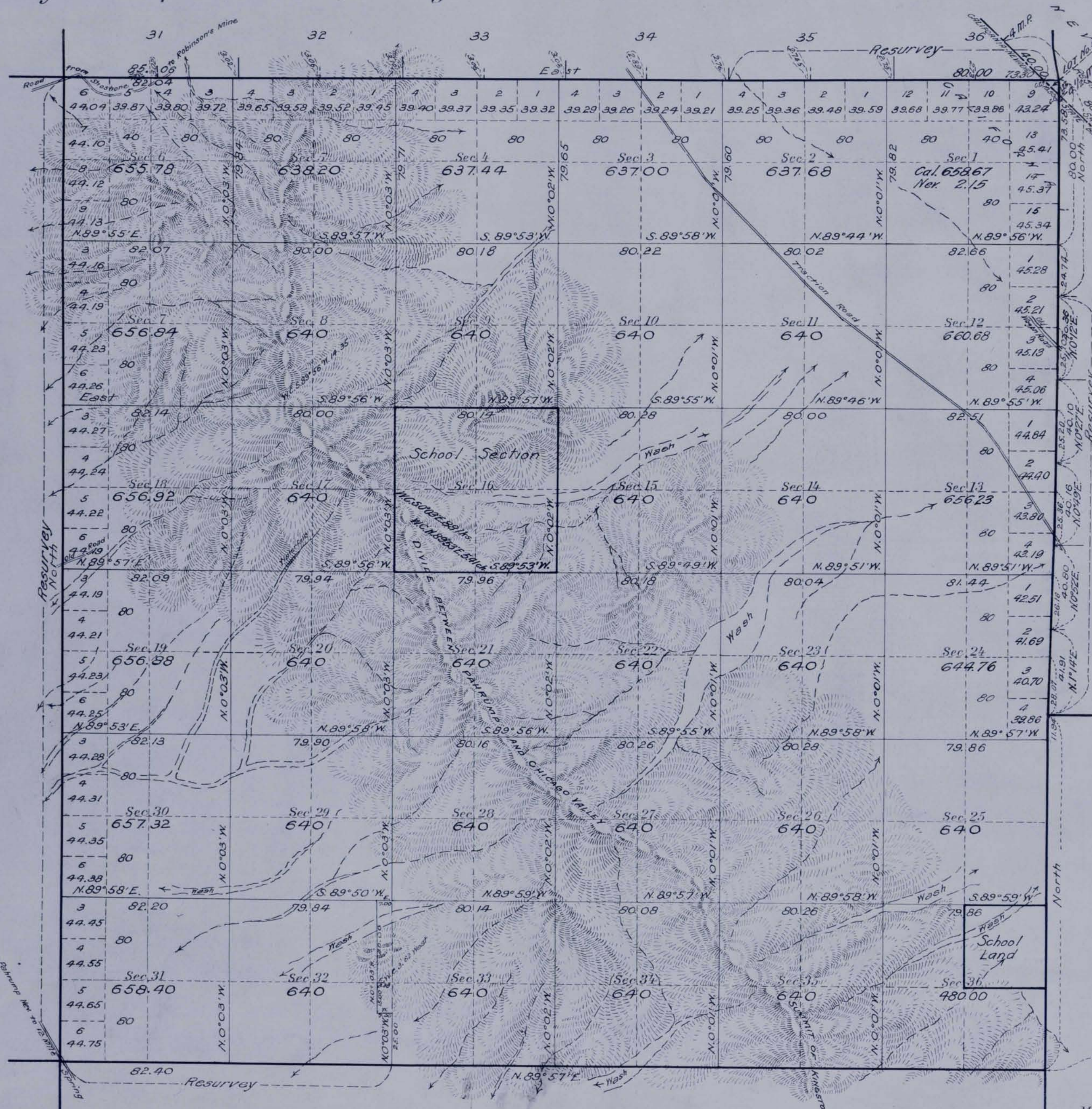


Survey and Resurvey Township No. 23 North, Range No. 8 East, San Bernardino Meridian, California and Nevada.



Note: Portions of this township were surveyed in 1857 and 1878. See plat's approved March 29, 1858 and May 12, 1880. Resurvey was authorized by the First Assistant Secretary of the Interior February 15, 1915, under the provisions of the Act of March 3, 1909, (35 Stat. 845)

Area:
Resurveyed 7,706.03 Acs.
New 15,488.92 "

Areas in Acres	
Public Land, Calif.	22,392.80
Public Land, Nev.	2.15
Indian Allotments	
Mineral Claims	
Water Surface	
School Land	800.00
Total Area	23,194.95

Lat. 36° 04' 30" N.
Long. 116° 04' W.
Scale 40 Chains to an inch
Mean Magnetic Declination

766 with T 23 N R 8 E S 17 M

Surveys Designated	By Whom Surveyed	Group	Amount of Surveys			When Surveyed	
			Mts.	chs.	lks.	Began	Completed
N. 1/4 Tp. 23, sur. and resur.	Guy Redwine,	No. 37	6	05	06	Mar. 3, 1917	Mar. 5, 1917
E. 1/4 Tp. 23, sur. and resur.	U.S. Surveyor	" 1916	6	00	01	Feb. 6, "	" 3, "
W. 1/4 Tp. 23, resur.	"	"	See plat 7.23 N., R. 7 E. S. B. M.			S. B. M.	
S. 1/4 Tp. 23, sur. and resur.	and	"	See plat 7.22 N., R. 8 E. S. B. M.			S. B. M.	
Subdivisions, sur. and resur.	"	"	60	17	46	Feb. 8, 1917	Mar. 27, 1917
Connections	Dwight R. Averill,	November 29	43	85.5		Mar. 3, "	" 24, "
Cal. - Nev. State Bdy	U.S. Transitman	" 1916		58	40	" "	" 3 "

Survey and Resurvey
The above map of Township No. 23 North, Range No. 8 East of the San Bernardino Meridian, California and Nevada is strictly conformable to the field notes of the survey thereof on file in this office, which have been examined and approved

U. S. Surveyor General's Offices
San Francisco, California,
and Reno, Nevada
March 23, 1920

Chris H. Moore
U.S. Surveyor General for California

John B. Sullivan
U.S. Surveyor General for Nevada