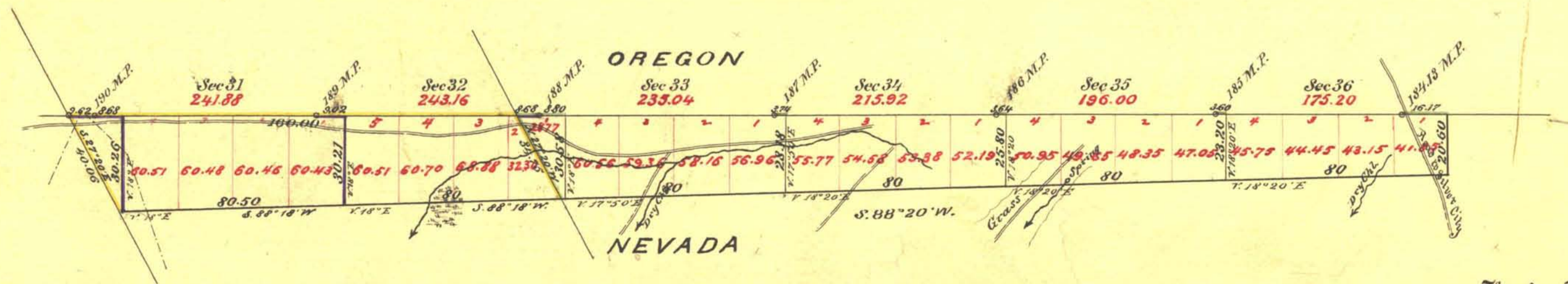


Township N° 48 North,

Range N° 38 East,

Mount Diablo Meridian.

Total number of Acres 1307.20



Surveys Designated	By Whom Surveyed	Date of Contract	Acre. of Surveys			When Surveyed	No. of Contract
			M.	Ch.	Lks.		
State Line	D. G. Major	Sept. 17 th 1872	4	22	01	1878	82
S. and E. Boundaries	D. Van Lenzp.	July 25 th 1878	"	22	60	"	"
Hay Reserve	"	"	"	22	26	"	"
Subdivisions	"	"	1	44	36	"	"
Connections on State Line	"	"	"	74	81	"	192
Hay Reserve, re-surveyed	Yellou, Gould and Moran	" 2 nd 1890	2	30	21	"	"
Subdivisions	"	"	"	30	26	"	"
W. Boundary	"	"	"	36	00	"	"
Connections on State Line	"	"	"	36	00	"	"

The above Map of Township N° 48 North, Range N° 38 East, Mt. Diablo Meridian, is strictly conformable to the field notes there of on file in this Office, which have been examined and approved.

Surveyor General's Office
 Reno Nev. Apl. 7th 1894.

Geo. F. Swettenham
 Sur. Genl for Nevada.