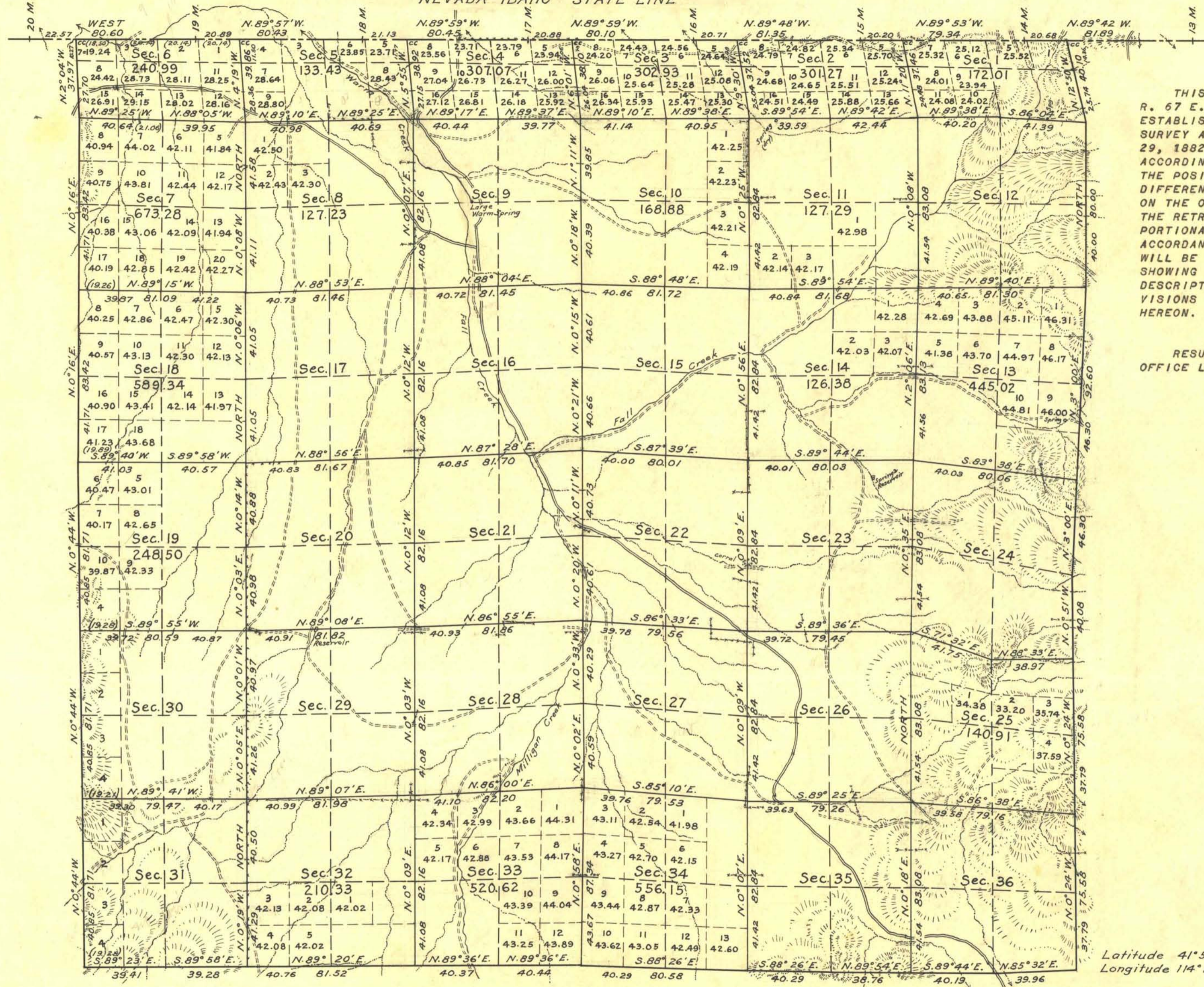


TOWNSHIP N° 47 NORTH, RANGE N° 67 EAST, MOUNT DIABLO MERIDIAN, NEVADA.
DEPENDENT RESURVEY

NEVADA-IDAHO STATE LINE



THIS PLAT OF THE RESURVEY OF T. 47 N., R. 67 E., DELINEATES A RETRACEMENT AND RE-ESTABLISHMENT OF THE LINES OF THE ORIGINAL SURVEY AS SHOWN UPON THE PLAT APPROVED JUNE 29, 1882, IN THEIR TRUE ORIGINAL POSITION ACCORDING TO THE BEST AVAILABLE EVIDENCE OF THE POSITION OF THE ORIGINAL CORNERS; ALL DIFFERENCES BETWEEN THE MEASUREMENTS SHOWN ON THE ORIGINAL PLAT AND THOSE DERIVED IN THE RETRACEMENT HAVE BEEN DISTRIBUTED PROPORTIONALLY BETWEEN ACCEPTED CORNERS IN ACCORDANCE WITH SURVEYING RULES; REFERENCE WILL BE MADE TO THE ORIGINAL PLAT FOR THE SHOWING OF THE AREAS AND MORE DETAILED DESCRIPTIONS OF THE VARIOUS SMALLER SUBDIVISIONS EXCEPT WHERE NEW AREAS ARE SHOWN HEREON.

RESURVEY AUTHORIZED BY GENERAL LAND OFFICE LETTER "E" DATED SEPTEMBER 12, 1940.



Scale: 40 chains to an inch

Area resurveyed 21388.36 Acres

UNITED STATES DEPARTMENT OF THE INTERIOR
GENERAL LAND OFFICE

LINES DESIGNATED	BY WHOM SURVEYED	GROUP NO.	DATE OF SPECIAL INSTRUCTIONS	WHEN SURVEYED	
				BEGUN	COMPLETED
STATE LINE	JAMES W. HARDISON	311	SEPTEMBER 19, 1940	SEPTEMBER 23, 1940	JUNE 7, 1941
EXTERIOR					
SUBDIVISIONAL					

DENVER, COLORADO, SEPTEMBER 16, 1944.
THIS PLAT OF TOWNSHIP NO. 47 NORTH, RANGE NO. 67 EAST, OF THE MOUNT DIABLO MERIDIAN, NEVADA, IS STRICTLY CONFORMABLE TO THE FIELD NOTES OF THE RESURVEY THEREOF WHICH HAVE BEEN EXAMINED AND APPROVED.

WASHINGTON, D.C., MARCH 30, 1945.
THE RESURVEY REPRESENTED BY THIS PLAT HAVING BEEN CORRECTLY EXECUTED IN ACCORDANCE WITH THE REQUIREMENTS OF LAW AND THE REGULATIONS OF THIS OFFICE, IS HEREBY ACCEPTED.

W. H. Hartney
SUPERVISOR OF SURVEYS

Joel David Wolfson
ASSISTANT COMMISSIONER