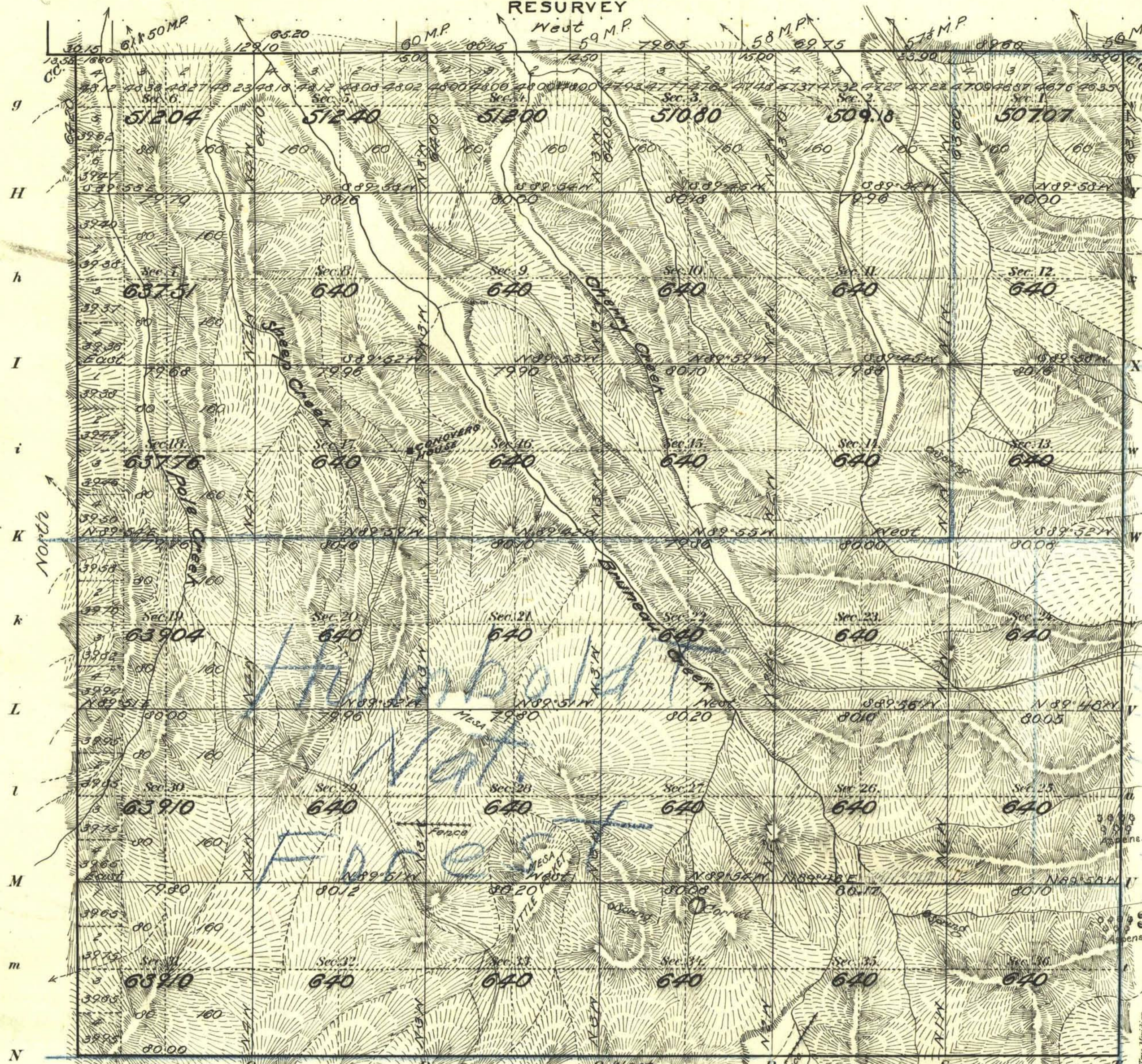


Township N<sup>o</sup> 47 N. Range N<sup>o</sup> 60 E. M<sup>o</sup> Diablo Meridian

NEVADA - IDAHO BOUNDARY LINE

RESURVEY



Meanders of			
Posts	Courses	Ch <sup>2</sup> Lk <sup>2</sup>	Posts

Latitude 41° 53' N  
 Longitude 115° 08' W  
 Mean Mag Decl 18° E.

Accepted by G.L.O., April 9<sup>th</sup> 1901

Total number of Acres 22,256.00

Surveys Designated	By Whom Surveyed	Date of Contract	Amount of Surveys M. Ch <sup>2</sup> Lk <sup>2</sup>	When Surveyed	No. of Contract.
E.S. & N. Township lines	T.K. STENART	MAY 26, 99	17 47 37	MCH 3 TO APR 5, 1900	216
Subdivisions			58 79 62	APR 1-18, 1900	216
IDAHO LINE RE-SUR.			6 78 45	" 4-5, 1900	216
CONNECTIONS			2 06 10	APRIL, 1900	216

The above Map of Township N<sup>o</sup> 47 N. of Range N<sup>o</sup> 60 E. M<sup>o</sup> Diablo Meridian is strictly conformable to the field notes of the survey thereof on file in this Office, which have been examined and approved.

Surveyor General's Office.  
 Reno, Nev. July 25 1900

*Matthew J. Kyle*  
 Sur.<sup>l</sup> Gen.<sup>l</sup>