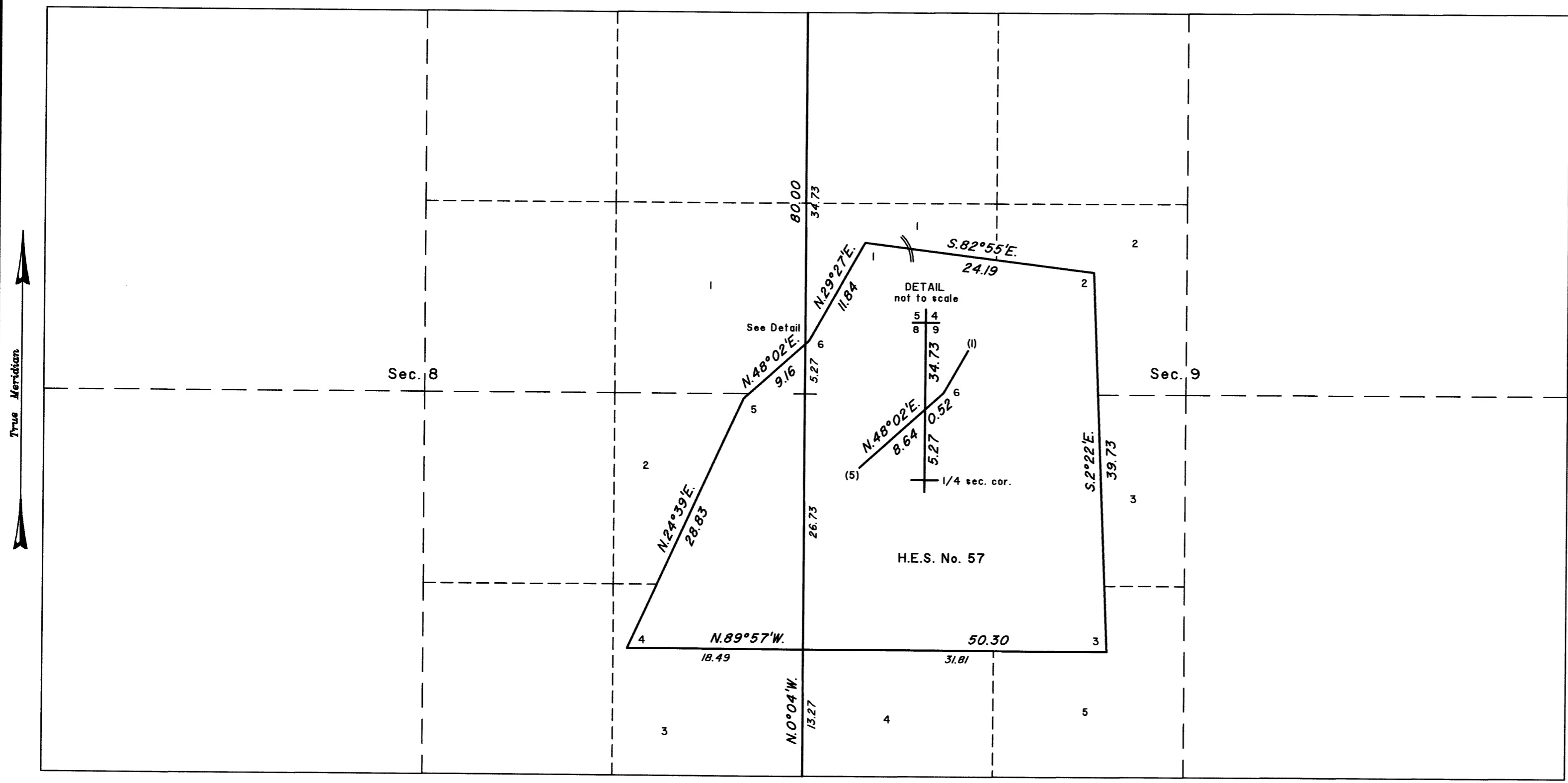


TOWNSHIP 47 NORTH, RANGE 58 EAST, OF THE MOUNT DIABLO MERIDIAN, NEVADA
DEPENDENT RESURVEY

OFFICIALLY FILED
NEVADA STATE OFFICE
JUL 08 2021
at 10:00 AM on

Cor. of Secs. 4, 5, 8, and 9
BLM, GPS, NAD83(2011)(EPOCH:2010.00)
Latitude 41°59'01.90"N
Longitude 115°26'07.162"W



Cor. of Secs. 8, 9, 16, and 17
BLM, GPS, NAD83(2011)(EPOCH:2010.00)
Latitude 41°58'09.755"N
Longitude 115°26'07.087"W

A history of surveys is contained in the field notes.

This plat represents the dependent resurvey of a portion of the subdivisional lines and of H.E.S. No. 57, designed to restore the corners in their true original locations according to the best available evidence, T. 47 N., R. 58 E., Mount Diablo Meridian, Nevada.

For those lines not depicting bearings and distances, refer to the plat approved June 2, 1915 and the plats accepted January 26, 1920, and January 2, 2020.

Except as depicted hereon, the lottings and areas are as shown on the plat accepted January 26, 1920.

Survey executed by Patrick A. Baumgartner, Cadastral Surveyor, beginning August 10, 2020 and completed September 14, 2020, pursuant to special instructions dated June 16, 2020, for Group No. 996, Nevada.

UNITED STATES DEPARTMENT OF THE INTERIOR
BUREAU OF LAND MANAGEMENT

Reno, Nevada July 06, 2021

This plat is strictly conformable to the approved field notes and the survey, having been correctly executed in accordance with the requirements of law and the regulations of this Bureau, is hereby accepted.

For the Director

Chief Cadastral Surveyor for Nevada

