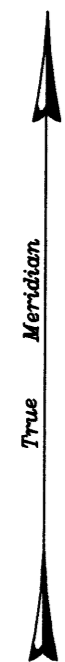


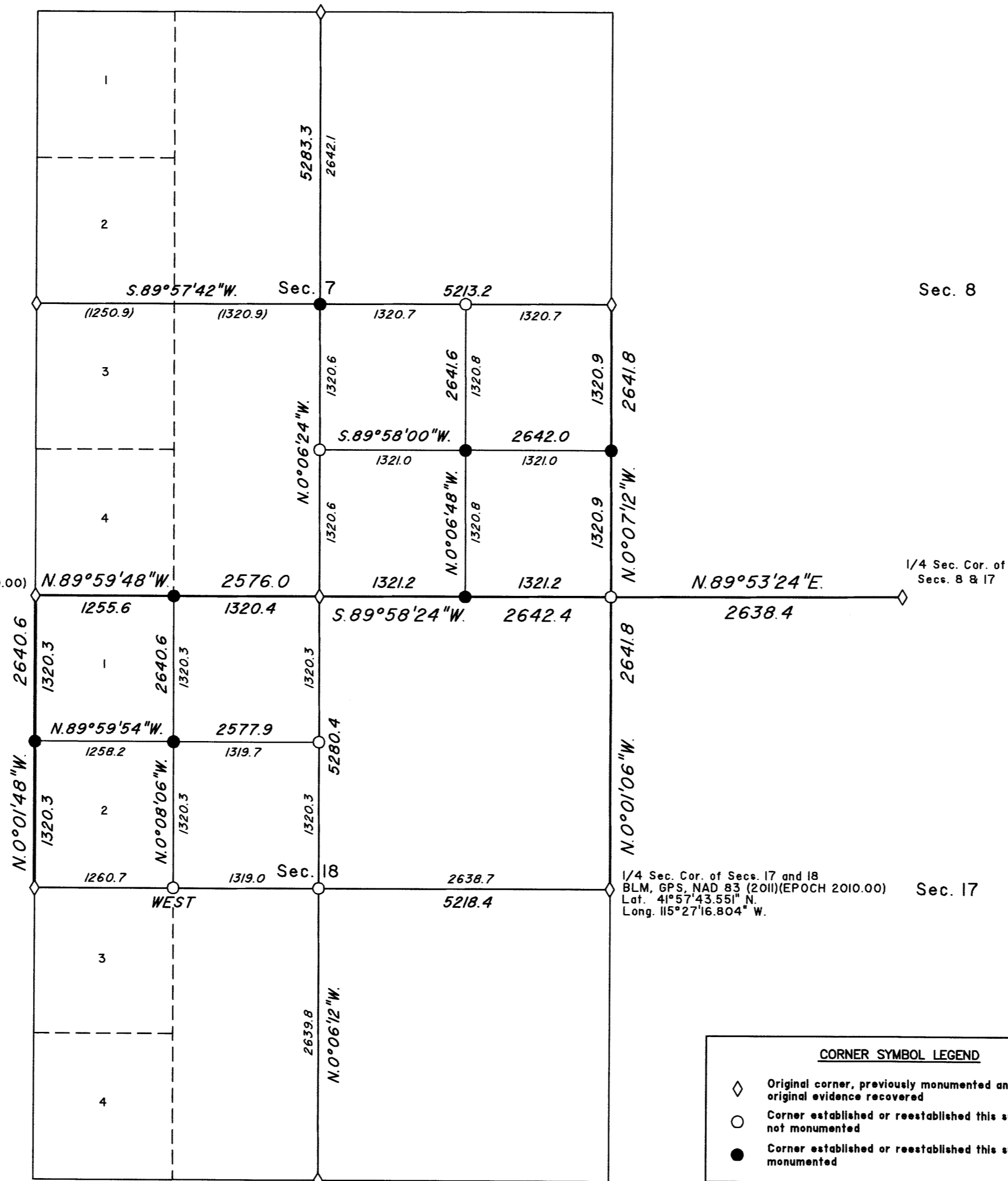
TOWNSHIP 47 NORTH, RANGE 58 EAST, OF THE MOUNT DIABLO MERIDIAN, NEVADA

DEPENDENT RESURVEY AND SUBDIVISION

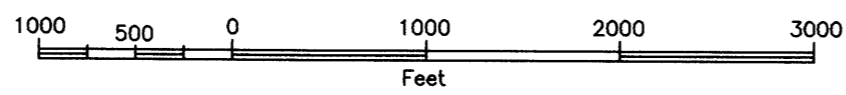


Cor. of Secs. 7, 12, 13, and 18
BLM, GPS, NAD 83 (2011)(EPOCH 2010.00)
Lat. 41°58'09.631" N.
Long. 115°28'25.873" W.

T. 47 N., R. 57 E.



CORNER SYMBOL LEGEND	
◇	Original corner, previously monumented and/or original evidence recovered
○	Corner established or reestablished this survey, not monumented
●	Corner established or reestablished this survey, monumented



A history of surveys is contained in the field notes.

This plat represents the dependent resurvey of a portion of the west boundary and the subdivision lines, designed to restore the corners in their true original locations according to the best available evidence, and the subdivision of sections 7 and 18, T. 47 N., R. 58 E., Mount Diablo Meridian, Nevada.

For those lines not depicting bearings and distances, refer to the plats accepted January 25, 1919, and January 26, 1920.

Except as depicted hereon, the lottings and areas are as shown on the plat accepted January 26, 1920.

Survey executed by Patrick A. Baumgartner, Cadastral Surveyor, beginning June 12, 2018, and completed June 20, 2018, pursuant to special instructions dated June 7, 2018, for Group No. 986, Nevada.

UNITED STATES DEPARTMENT OF THE INTERIOR
BUREAU OF LAND MANAGEMENT

Reno, Nevada January 2, 2020

This plat is strictly conformable to the approved field notes and the survey, having been correctly executed in accordance with the requirements of law and the regulations of this Bureau, is hereby accepted.

For the Director

Chief Cadastral Surveyor for Nevada