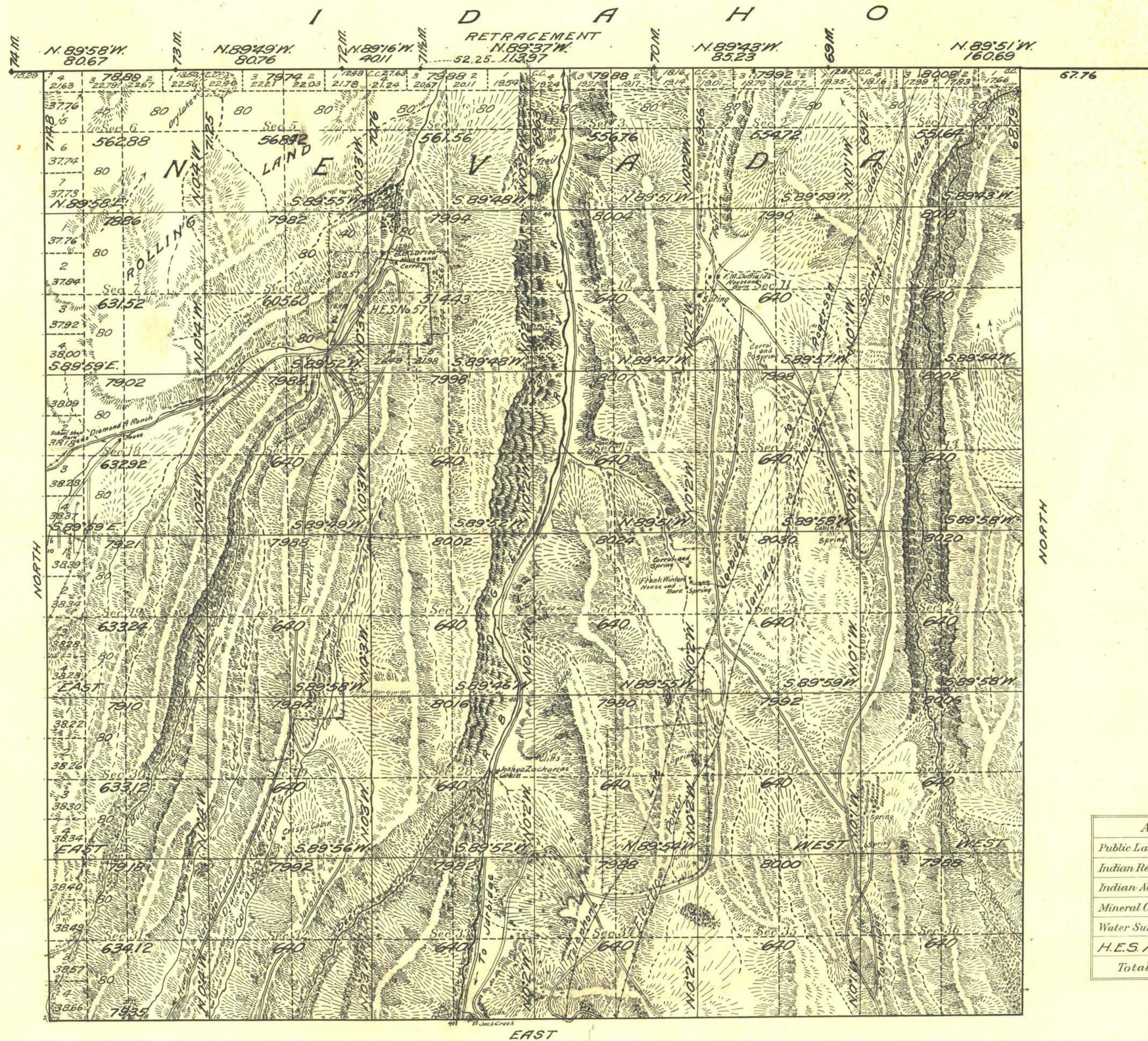


Township No 47 North Range No 58 East Mt Diablo Meridian, Nevada

Survey accepted G. L. O.
January 26, 1920



Areas in Acres	
Public Land	22360.93
Indian Reservation	
Indian Allotments	
Mineral Claims	
Water Surface	
H.E.S. Area	159.97
Total Area	22520.90

Scale 40 Chains to an inch

Mean Magnetic Declination 19° 15' E.
Latitude 41° 55' N.
Longitude 115° 22' W.

The above map of Township No. 47 North Range No. 58 East of the Mt. Diablo Meridian, Nevada is strictly conformable to the field notes of the survey thereof on file in this office, which have been examined and approved

U. S. Surveyor General's Office.
Reno, Nevada, April 26, 1919

John B. Sullivan
Surveyor General.

Surveys Designated	By Whom Surveyed	Group No.	Date	Amount of Surveys			When Surveyed	
				Mls.	chs.	fts.	Begun	Completed
State Line Retr.	J.G. Clark U.S.T.	43	April 15, 1916	7	01	43	July 10, 1918	July 30, 1918
East Boundary	"	"	"	5	68	79	June 27, 1918	July 6, 1918
South Boundary	"	"	"	5	79	35	June 18, 1918	June 26, 1918
Subdivision	"	"	"	59	25	42	June 24, 1918	July 29, 1918
West Boundary	"	"	"	5	71	48	Oct. 25, 1916	Nov. 1, 1916

47N 58E