

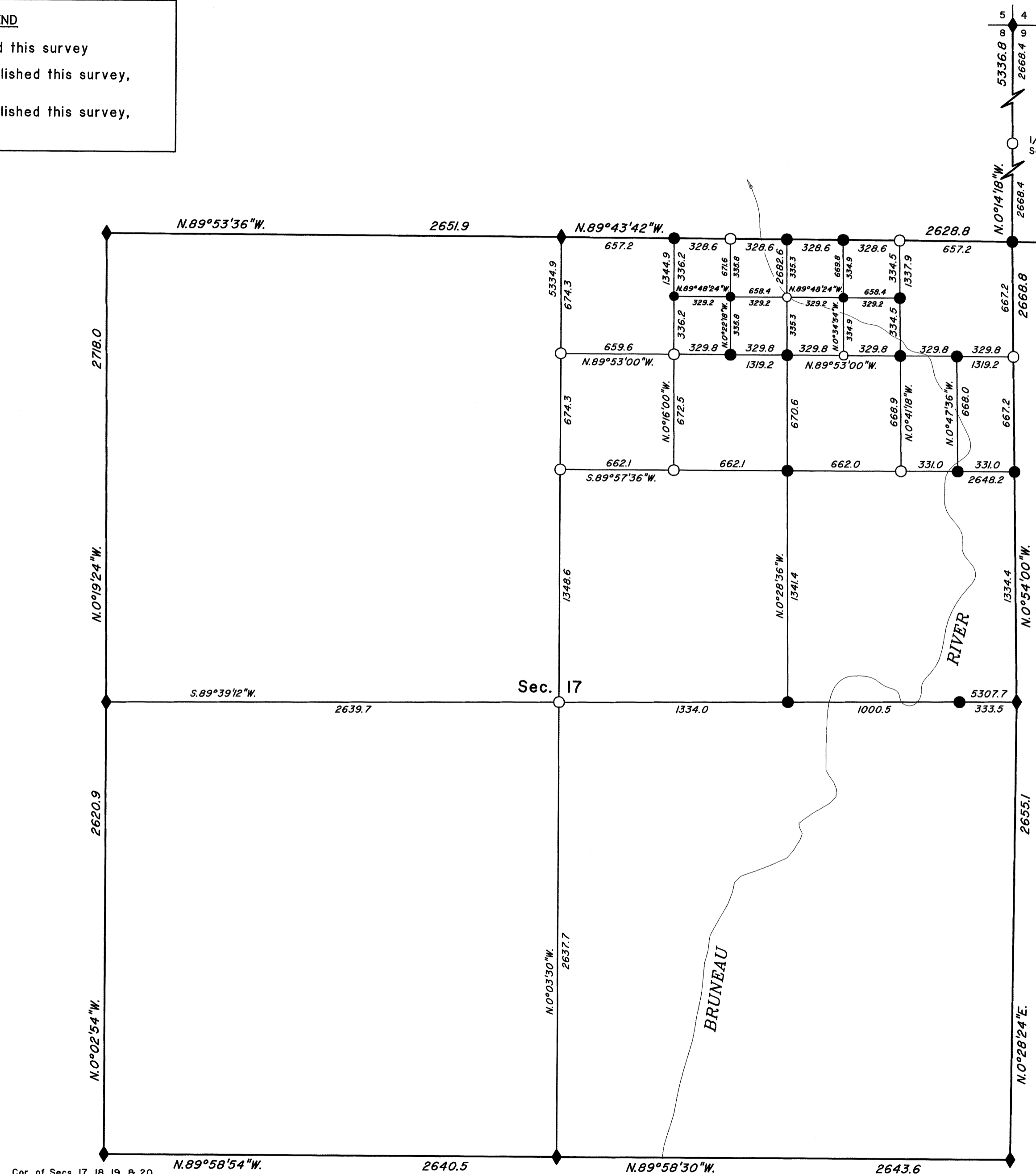
TOWNSHIP 47 NORTH, RANGE 56 EAST, OF THE MOUNT DIABLO MERIDIAN, NEVADA

DEPENDENT RESURVEY AND SUBDIVISION

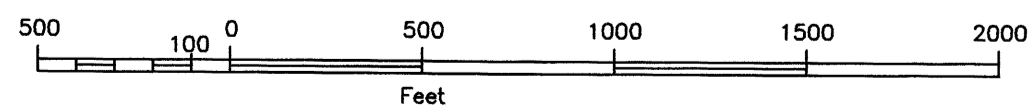
OFFICIALLY FILED
NEVADA STATE OFFICE
at 10:00 AM on MAY 31 2017

CORNER SYMBOL LEGEND

- ◆ Original corner, remonumented this survey
- Corner established or reestablished this survey, not monumented
- Corner established or reestablished this survey, monumented



Cor. of Secs. 17, 18, 19, & 20
BLM, GPS, NAD 83 (2011)(EPOCH 2010.00)
Latitude 41°57'17.927" N.
Longitude 115°41'13.393" W.



BLM, GPS, NAD 83 (2011)(EPOCH 2010.00)
Latitude 41°59'03.190" N.
Longitude 115°40'04.037" W.

A history of surveys is contained in the field notes.

This plat represents the dependent resurvey of a portion of the subdivisional lines, designed to restore the corners in their true original locations according to the best available evidence, and the subdivision of section 17, T. 47 N., R. 56 E., Mount Diablo Meridian, Nevada.

Except as depicted hereon, the lottings and areas are as shown on the plat approved September 15, 1905.

Survey executed by Patrick A. Baumgartner, Cadastral Surveyor, beginning July 5, 2016 and completed August 9, 2016, pursuant to special instructions dated July 1, 2016, for Group No. 963, Nevada.

**UNITED STATES DEPARTMENT OF THE INTERIOR
BUREAU OF LAND MANAGEMENT**

Reno, Nevada May 26, 2017

This plat is strictly conformable to the approved field notes and the survey, having been correctly executed in accordance with the requirements of law and the regulations of this Bureau, is hereby accepted.

For the Director

Michael O. Hammurby

Chief Cadastral Surveyor for Nevada