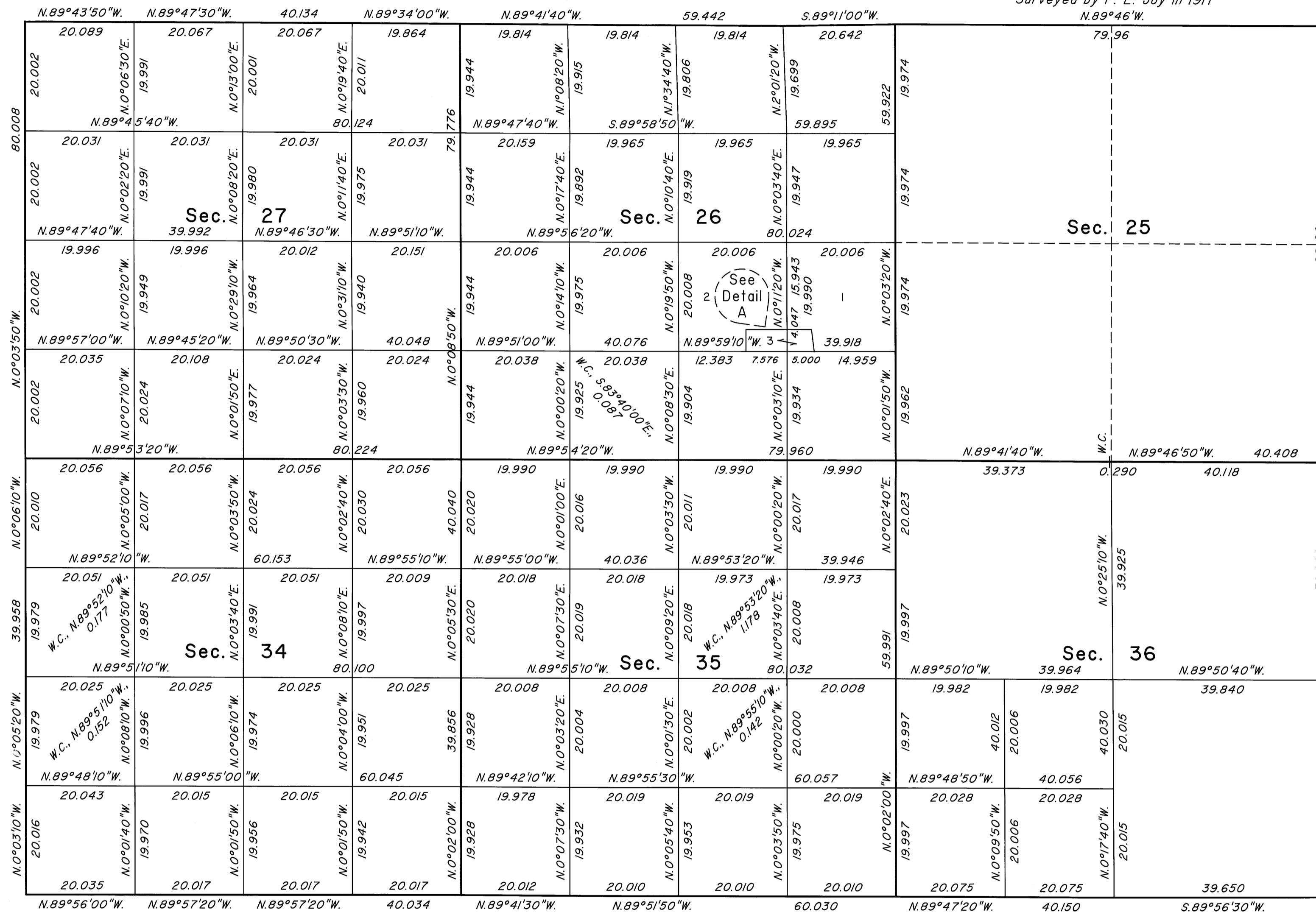


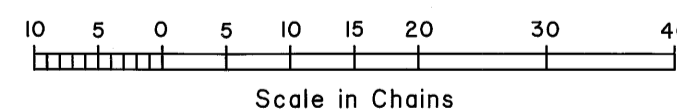
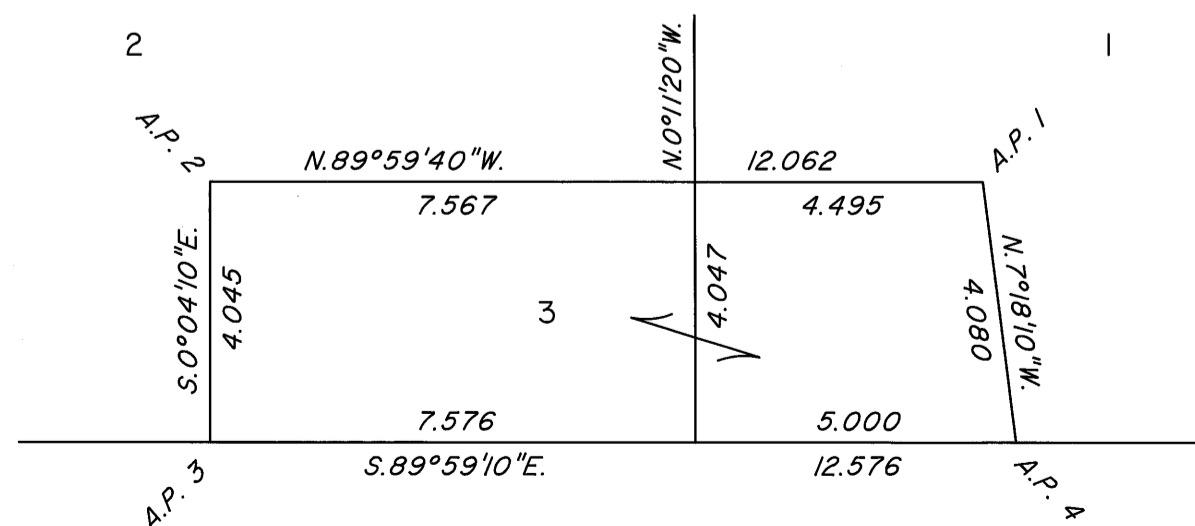
TOWNSHIP 47 NORTH, RANGE 52 EAST, OF THE MOUNT DIABLO MERIDIAN, NEVADA

ENLARGED DIAGRAM

Surveyed by F. E. Joy in 1911  
N.89°46'W.



DETAIL A  
Not to Scale



Reference should be made to Sheet No. 1 for survey information.

UNITED STATES DEPARTMENT OF THE INTERIOR  
BUREAU OF LAND MANAGEMENT

Reno, Nevada September 25, 2008

This plat is strictly conformable to the approved field notes, and the survey, having been correctly executed in accordance with the requirements of law and the regulations of this Bureau, is hereby accepted.

For the Director

Chief Cadastral Surveyor, Nevada

OFFICIALLY FILED  
NEVADA STATE OFFICE  
at 10:00 AM on September 30, 2008