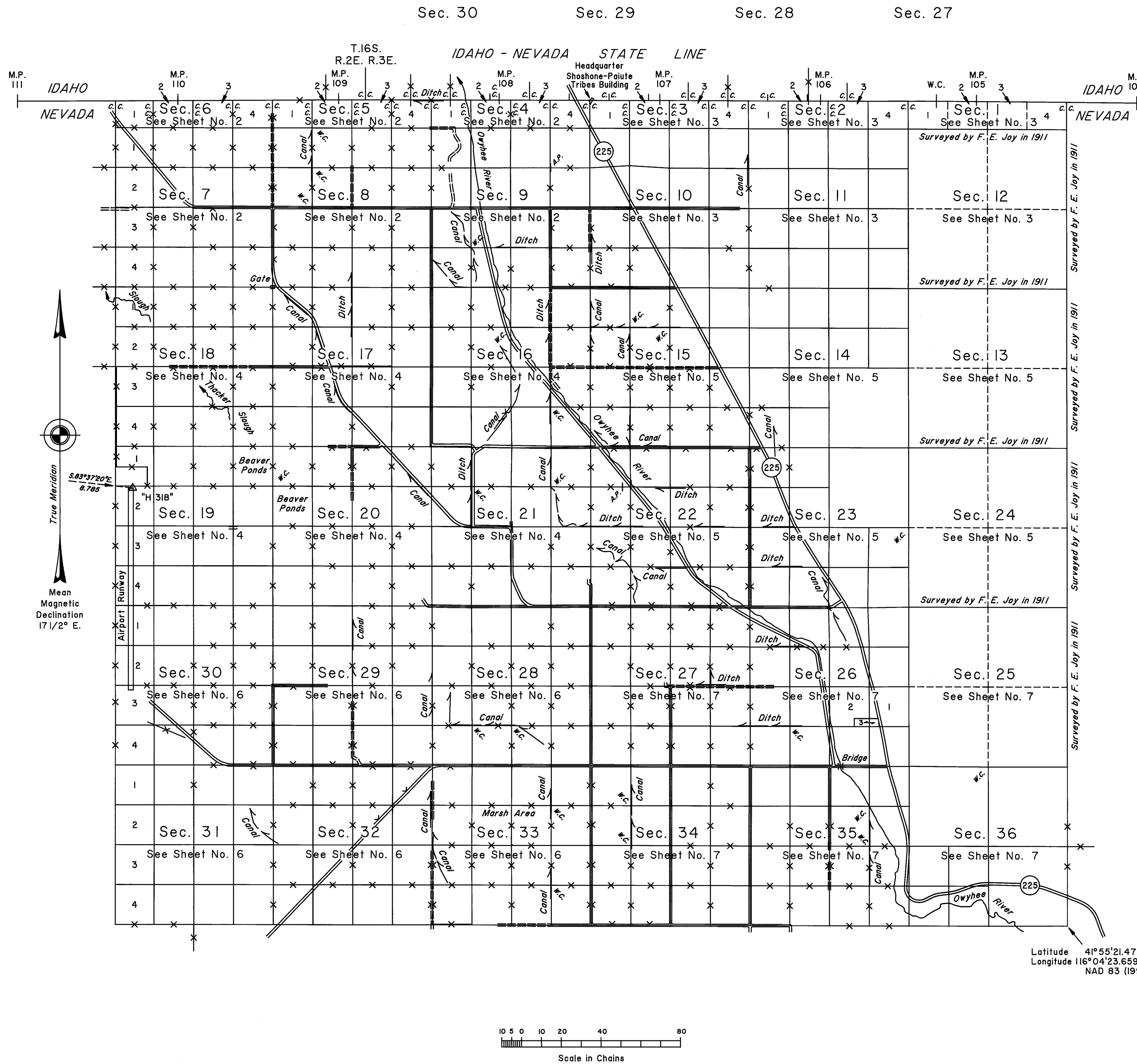


TOWNSHIP 47 NORTH, RANGE 52 EAST, OF THE MOUNT DIABLO MERIDIAN, NEVADA  
DEPENDENT RESURVEY, SUBDIVISION AND METES-AND-BOUNDS SURVEY

OFFICIALLY FILED  
NEVADA STATE OFFICE  
at 10:00 AM on September 30, 2008



A history of surveys is contained in the field notes.

This plat, in seven sheets, represents the dependent re-survey of a portion of the Idaho-Nevada State Line, from Mile Post 104 to Mile Post 111, the south boundary, a portion of the east boundary, the west boundary, a portion of the subdivisional lines and the subdivision-of-section lines of certain sections designed to restore the corners in their true original locations according to the best available evidence, and the further subdivision of certain sections and the metes-and-bounds survey of lot 3 in section 26, Township 47 North, Range 52 East, Mount Diablo Meridian, Nevada.

Except as indicated hereon, the lottings and areas are as shown on the plat approved November 4, 1914 and the supplemental plat accepted February 8, 1957.

Survey executed by Daniel R. Ontiveros, Cadastral Surveyor, and Clay W. Morrow, Surveying Technician, beginning June 17, 2005, and completed April 9, 2008, pursuant to Special Instructions dated October 21, 2004, for Group No. 821, Nevada.

UNITED STATES DEPARTMENT OF THE INTERIOR  
BUREAU OF LAND MANAGEMENT

Reno, Nevada September 25, 2008

This plat is strictly conformable to the approved field notes, and the survey, having been correctly executed in accordance with the requirements of law and the regulations of this Bureau, is hereby accepted.

For the Director

*David H. Moran*

Chief Cadastral Surveyor, Nevada

Latitude 41° 55' 21.471" N.  
Longitude 116° 04' 23.669" W.  
NAD 83 (1999)

