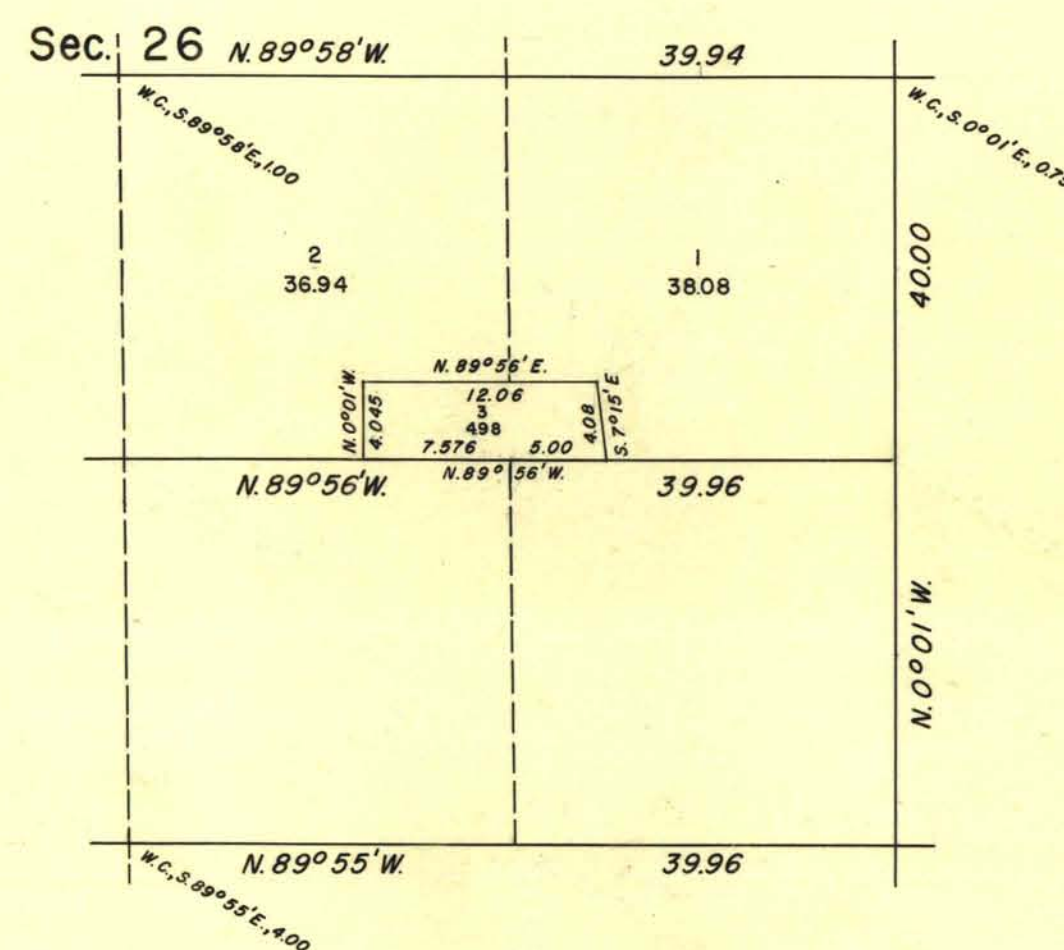
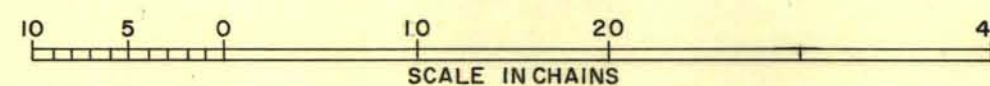


## TOWNSHIP 47 NORTH, RANGE 52 EAST, MOUNT DIABLO MERIDIAN, NEVADA

## SUPPLEMENTAL PLAT OF SECTION 26



This supplemental plat, creating lots in the  $N\frac{1}{2}SE\frac{1}{4}$ , sec. 26, T. 47 N., R. 52 E., Mt. Diablo Meridian, Nevada, is based upon plat approved November 4, 1914 and Departmental Order dated March 10, 1917.



UNITED STATES DEPARTMENT OF THE INTERIOR  
BUREAU OF LAND MANAGEMENT  
Washington, D. C. February 8, 1957

This plat showing amended lottings, having been correctly prepared in accordance with the regulations, is hereby accepted.

For the Director

*Earl G. Harrington*  
Cadastral Engineering Staff Officer