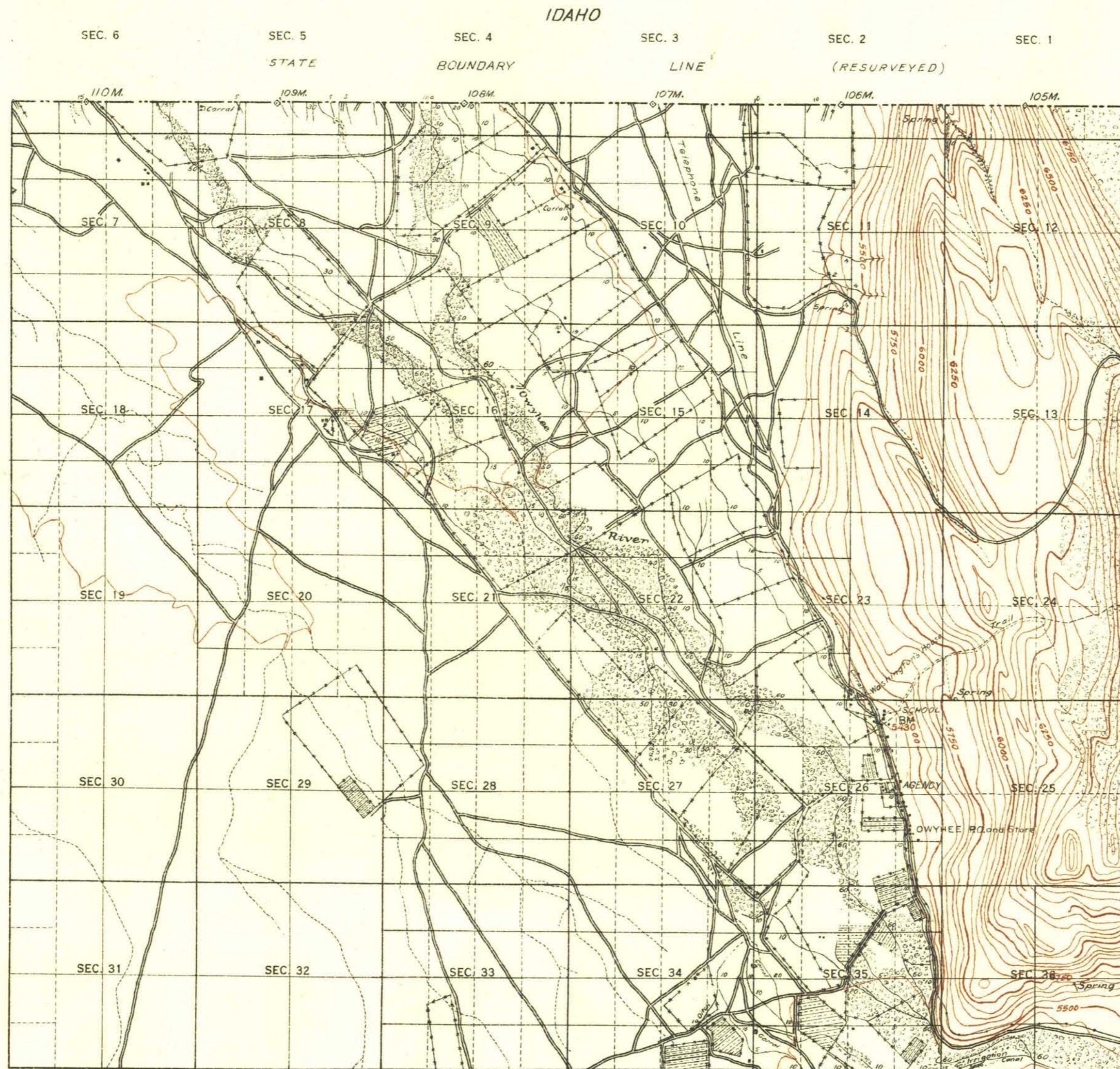


TOWNSHIP NO. 47 NORTH, RANGE NO. 52 EAST OF MOUNT DIABLO MERIDIAN, NEVADA.
 DUCK VALLEY INDIAN RESERVATION



Contour interval 30 feet
 Note: Curved lines or contours, are lines of equal elevation, and represent approximately the form of the earth's surface and the altitude above sea level.

Scale 40 Chains to an Inch

PLAT "B"

See Plat "A" for lot numbers, areas, bearings, and lengths of lines.

SURVEYS DESIGNATED	BY WHOM SURVEYED	TITLE	WHEN SURVEYED
STANDARD LINES			
TOWNSHIP	F. E. JOY	U. S. SURVEYOR	JULY 12, 13, 14, 17, 20, 21, 1911
SUBDIVISION	"	"	AUG. 21 - SEPT. 12, 1911
STATE	"	"	JUNE 24, 26, 1911
BOUNDARY	"	"	"

A. F. DUNNINGTON, Topographer in charge. Instructions April 27, 1911.

O.C.

THE ABOVE MAP OF TOWNSHIP NO. 47 NORTH RANGE NO. 52 EAST OF MOUNT DIABLO MERIDIAN, NEVADA, IS STRICTLY CONFORMABLE TO THE FIELD NOTES OF THE SURVEY THEREOF ON FILE IN THIS OFFICE, WHICH HAVE BEEN EXAMINED AND APPROVED

GENERAL LAND OFFICE

WASHINGTON D. C. Nov. 4, 1914.

C. W. Bull
 Acting Commissioner.

#2

T 47 N., R. 52 E.
 Plat "B"