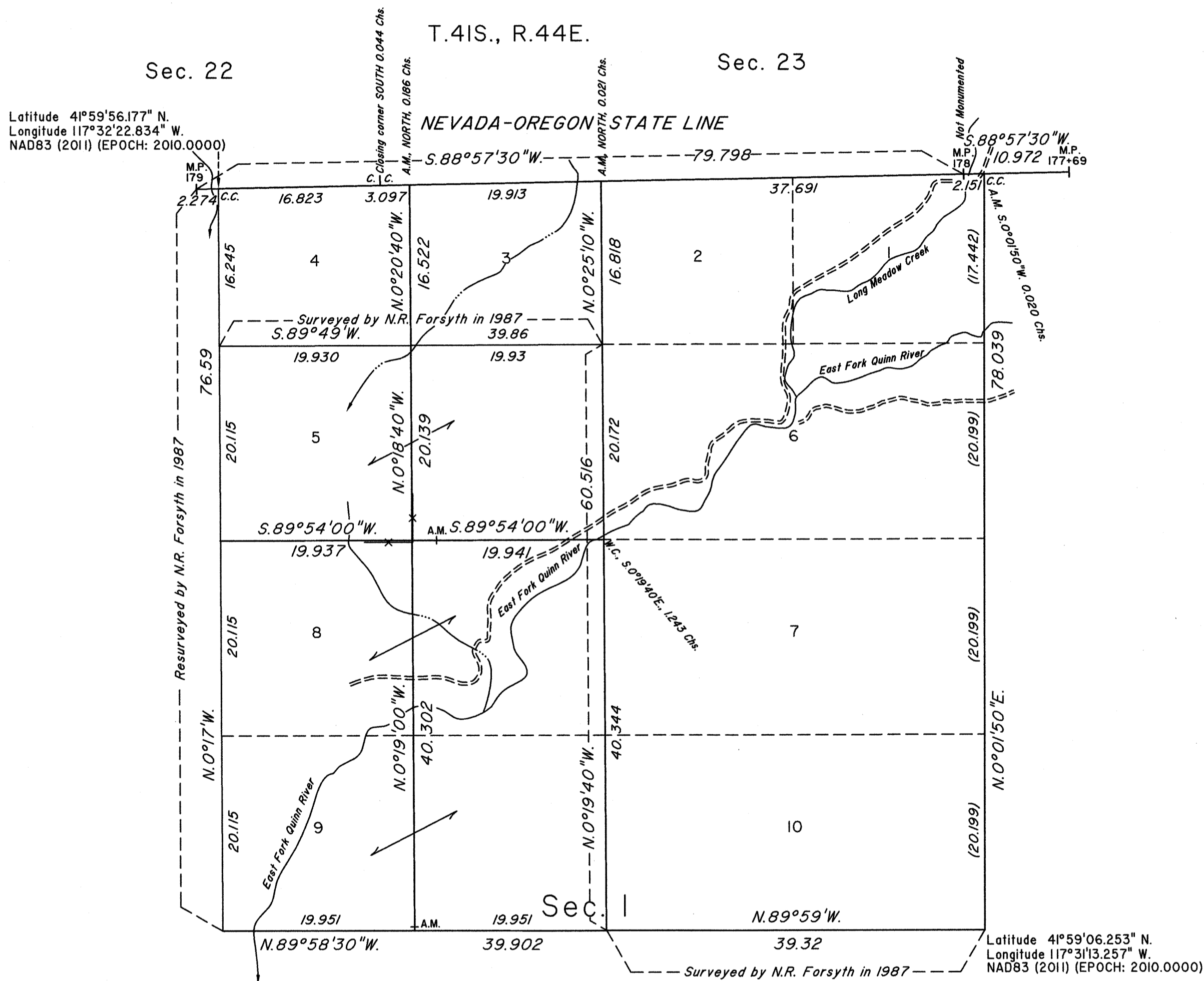


TOWNSHIP 47 NORTH, RANGE 39 EAST, OF THE MOUNT DIABLO MERIDIAN, NEVADA

DEPENDENT RESURVEY AND CORRECTIVE DEPENDENT RESURVEY



A history of surveys is contained in the field notes.

This plat represents the dependent resurvey of the Nevada-Oregon State Line between Mile Post No. 177+69 Chs. and Mile Post No. 179, a portion of the east boundary and a portion of the subdivision of section lines of section 1, and the corrective dependent resurvey of a portion of the subdivision of section lines of section 1, designed to restore the corners in their true original locations according to the best available evidence, Township 47 North, Range 39 East, Mount Diablo Meridian, Nevada.

Except as indicated hereon, the lottings and areas, are as shown on the plat approved July 25, 1882 and the plat accepted July 21, 1987.

Survey executed by Don R. Aschenbach, Cadastral Surveyor, beginning September 29, 2011 and completed June 26, 2013, pursuant to Special Instructions dated July 19, 2011, and Supplemental Special Instructions dated June 17, 2013, for Group No. 908, Nevada.

UNITED STATES DEPARTMENT OF THE INTERIOR
BUREAU OF LAND MANAGEMENT

Reno, Nevada February 11, 2014

This plat is strictly conformable to the approved field notes, and the survey, having been correctly executed in accordance with the requirements of law and the regulations of this Bureau, is hereby accepted.

For the Director

Chief Cadastral Surveyor for Nevada