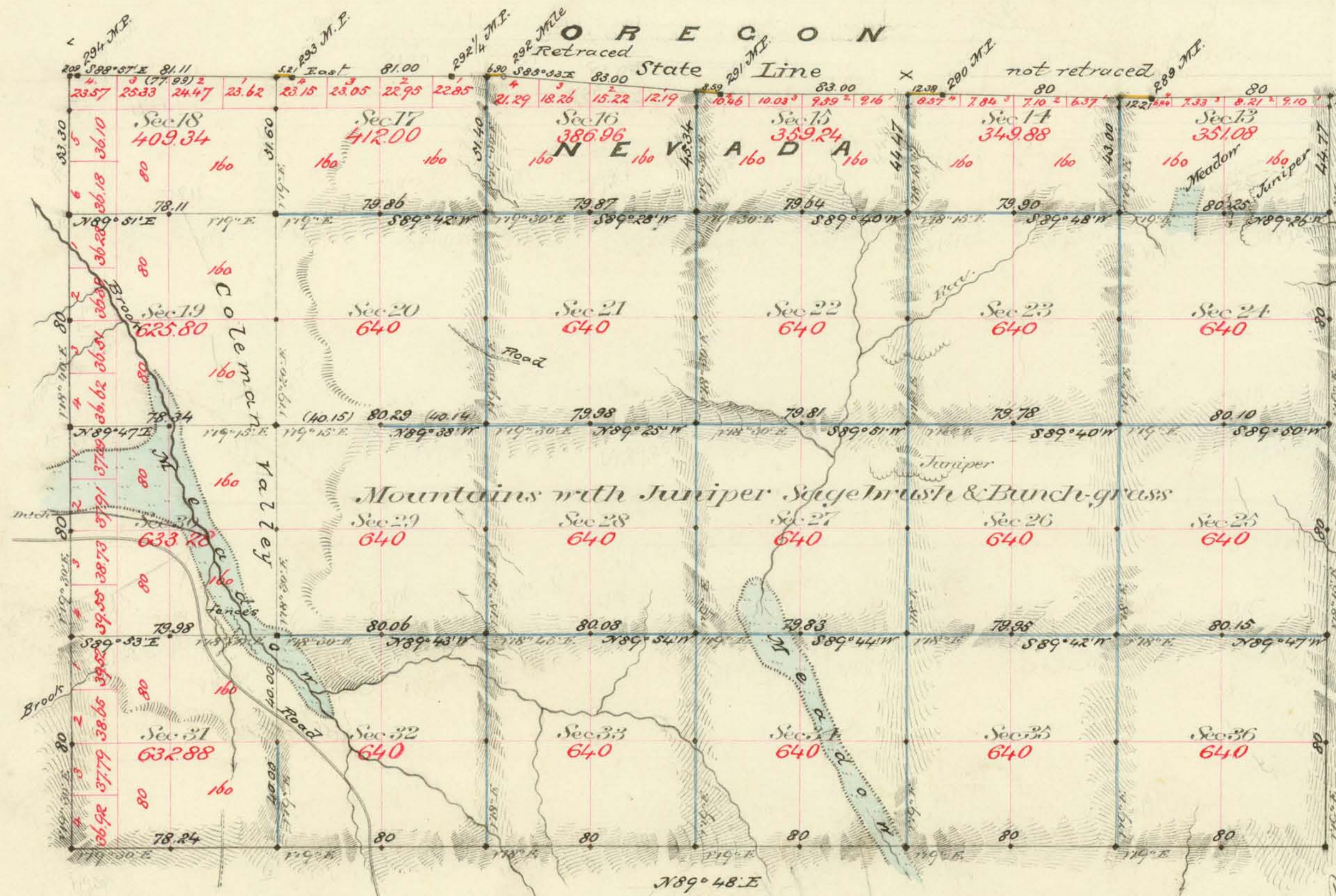


Township N^o 47 North Range N^o 20 East Mount Diablo Meridian



Aggregate Area of Public Land Surveyed 13,760.45 Ac.

Commenced January 4th 1881
Completed " 8th "

Survey designated	By whom Surveyed	Date of Contact	Acres of Survey	When Surveyed	Notes
N. Boundary State Line	D. G. Major	Sept 7 th 1872		1872	
Retraced	Dawson + Patricum	October 25 th 1880		1880	
Sub division Black 88	"	"	13 - 16 - 31	January 1881	101
" Blue 510	"	"	6 - 48 - 18	"	"
Connections on State Line with	"	"	29 - 23 - 51	"	"
			445 - 29	"	"

The above plat of Township N^o 47th North of Range N^o 20 East Mount Diablo Meridian is shown conformable to the field notes of the survey thereof on file in this office which have been examined and approved
U. S. Surveyor's Office
Virginia City, Nev.
January 28th 1881

C. S. Davis
U. S. Surveyor, Nev.

6219

T 47 N, R. 20 E.

KD

VD