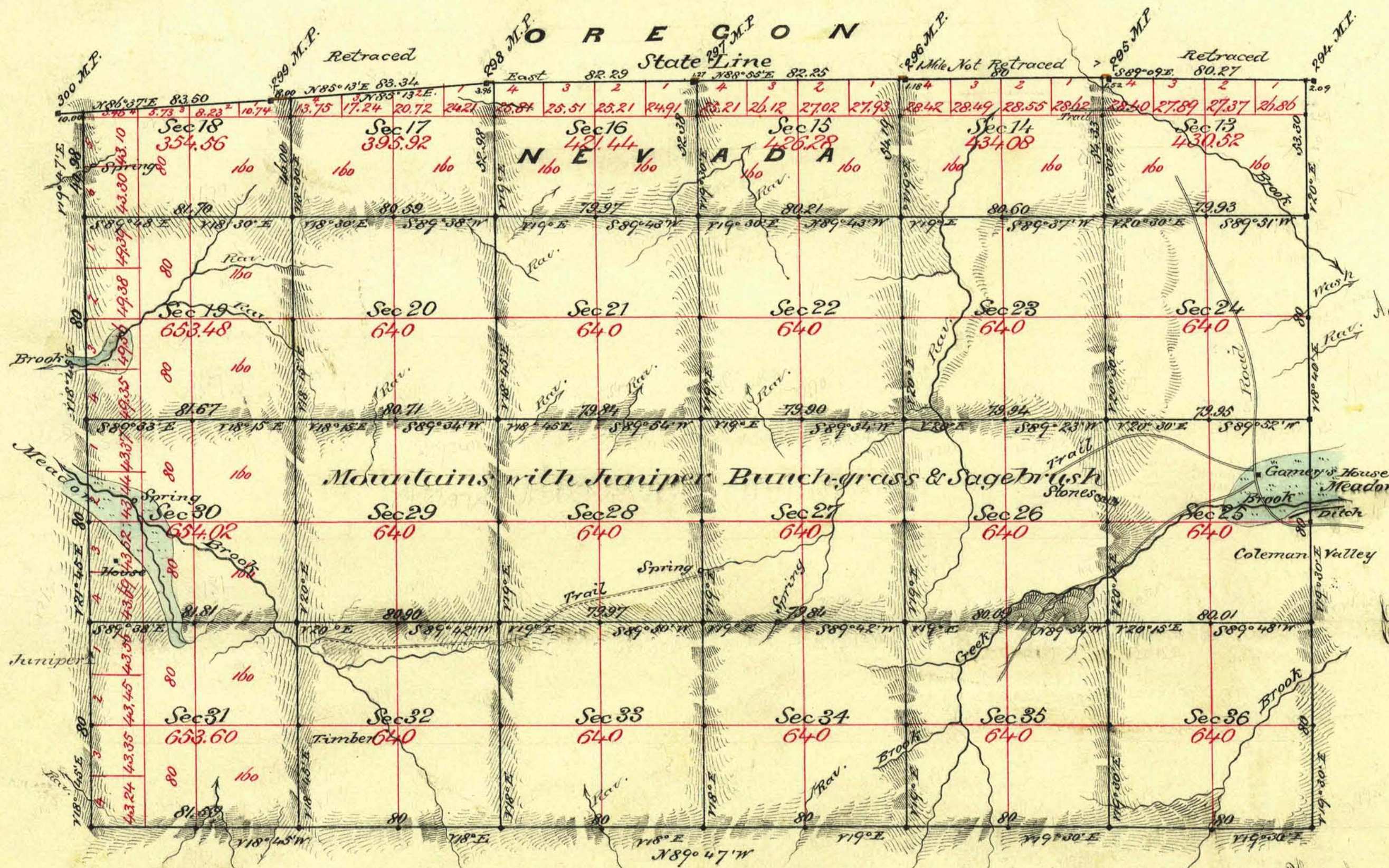


Township N<sup>o</sup> 47 North Range N<sup>o</sup> 19 East Mount Diablo Meridian



Aggregate Area of Public Land Surveyed 14,023.90 Ac.

Commenced December 29<sup>th</sup> 1880  
Completed January 3<sup>rd</sup> 1881

Survey designated	By whom Surveyed	Date of Contact	Acres of Survey	When Surveyed	J <sup>Y</sup> Com.
North Boundary State Line	D. B. Major	Sept. 7 <sup>th</sup> 1872		1872	
" " " Retraced	Benson & Putnam	Oct. 25 <sup>th</sup> 1880		1880	101
D. W. & J. Subdivisions	" "	" "	13-15-87		"
Connections on State Line (yellow)	" "	" "	36-27-81	Dec & Jan 1880 & 1881	"
			15-93		"

The above fold of Township N<sup>o</sup> 47 North of Range N<sup>o</sup> 19 East Mt. Diablo Meridian is strictly conformable to the field notes of the survey thereof on file in this office which have been examined and approved U. S. Surveyor General Office Virginia City Nev. January 29<sup>th</sup> 1881

*E. S. Davis*

U. S. Surveyor General Nev.