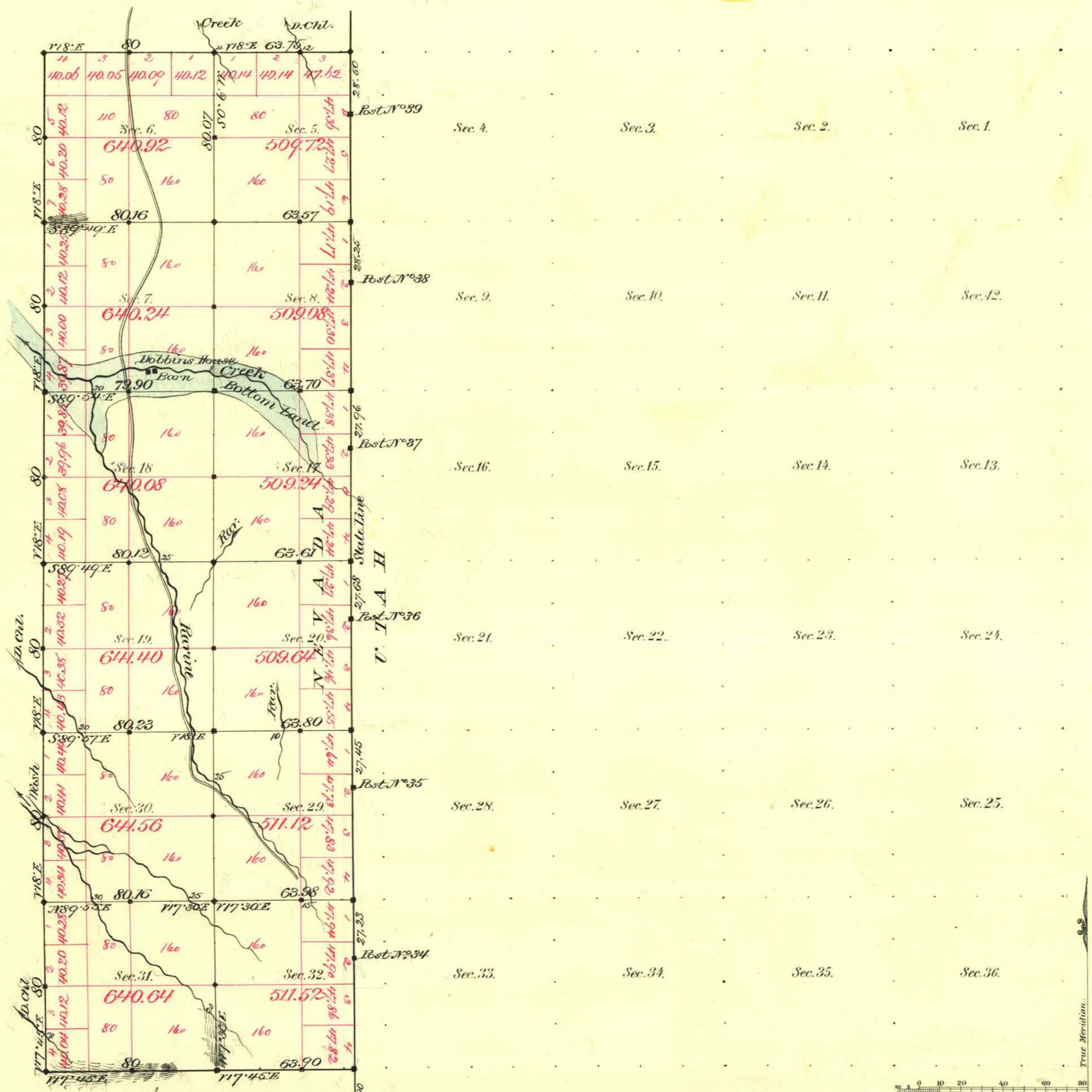


TOWNSHIP N<sup>o</sup> 46 NORTH RANGE N<sup>o</sup> 70 EAST MOUNT DIABLO MERIDIAN



Aggregate Area of Public Land Surveyed 6,905.16 Ac.

Commenced April 26<sup>th</sup> 1882  
Completed " 27<sup>th</sup> "

Subdivisions not noted run initial Var. of 17° 45' East.

For connections see T 45

Surveys Designated	By Whom Surveyed	Date of Contract	Amount of Survey	When Surveyed
State Line	J. C. James	Aug. 16 <sup>th</sup> 1870	M. Ch. Lk.	
A. S. R. bdy.	Bush & Thorburn	April 10 <sup>th</sup> 1882	9-47-65	
Subdivisions 88	"	"	14-79-30	
Connections on S. L.	"	"	1-58-57	

7<sup>th</sup> Cor<sup>n</sup>  
135  
"

The above Map of Township N<sup>o</sup> 46 North of Range N<sup>o</sup> 70 East  
Mt. Diablo Meridian is strictly conformable to the field  
notes of the survey thereof on file in this Office, which have been examined and approved.  
Surveyor General's Office }  
Beno Nevada }  
June 17<sup>th</sup> 1882 }  
C. L. Parry  
Sur. Gen.