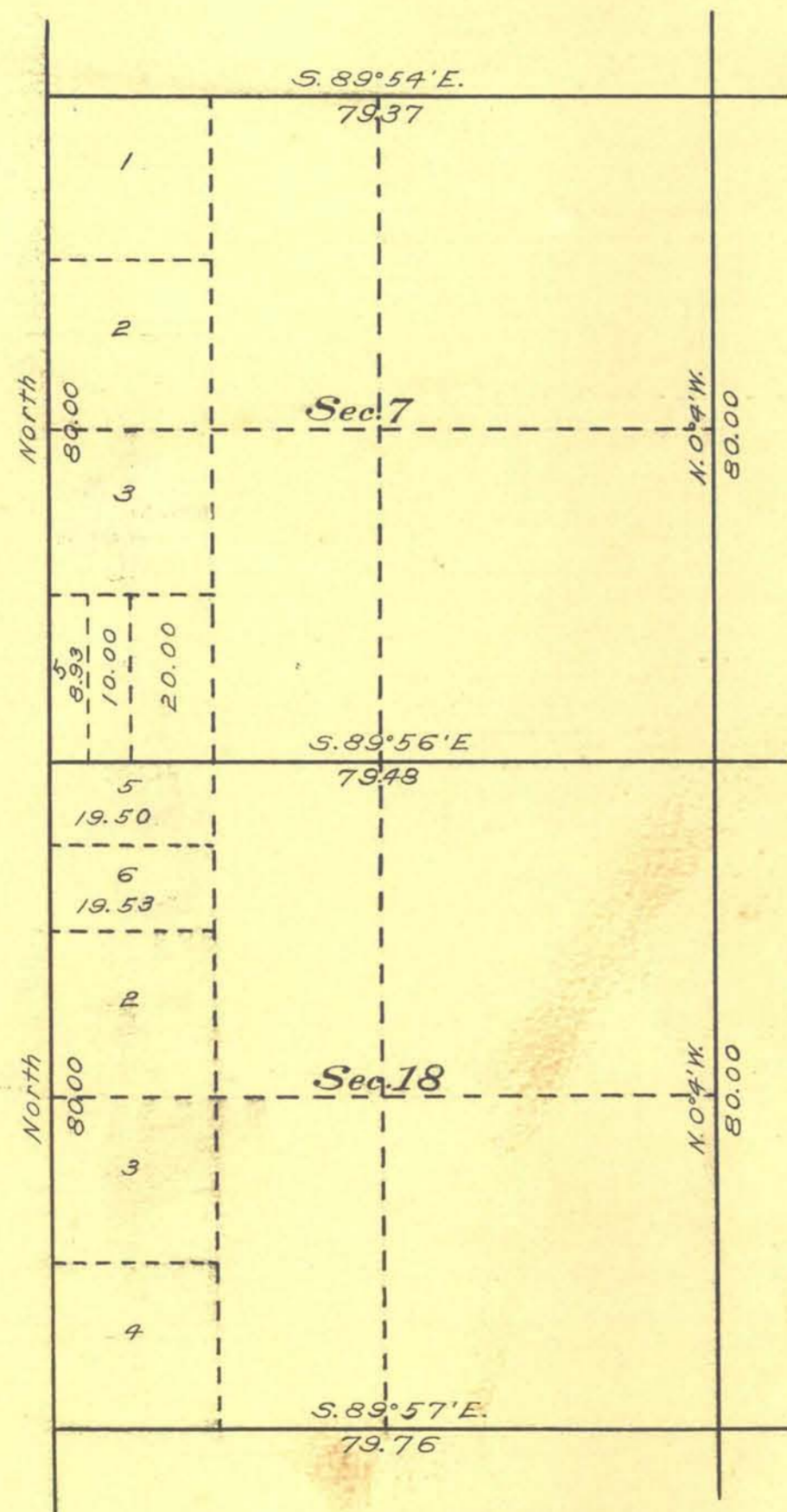


Supplemental Plat of Township No. 46 North, Range No. 56 East, Mt. Diablo Meridian, Nevada



This Supplemental Plat of Secs. 7 and 18, T. 46 N., R. 56 E., M. D. M., authorized by letter Elko 0870 E., dated May 7, 1918, has been prepared in order to accommodate homestead entry Elko 0870; and is hereby approved.
 U.S. Surveyor General's Office } *John B. Sullivan*
 Reno, Nevada, May 29, 1918 } U.S. Surveyor General for Nevada.

Scale, 20 Chs. to 1 in.