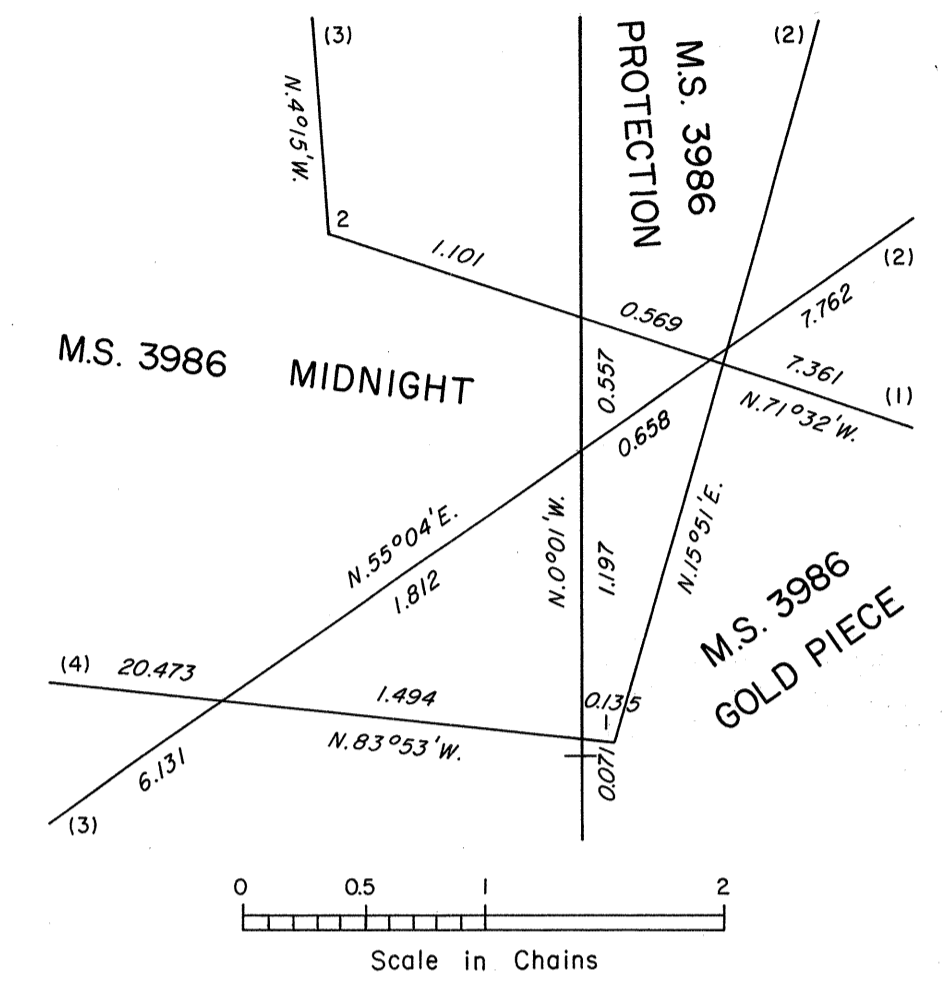
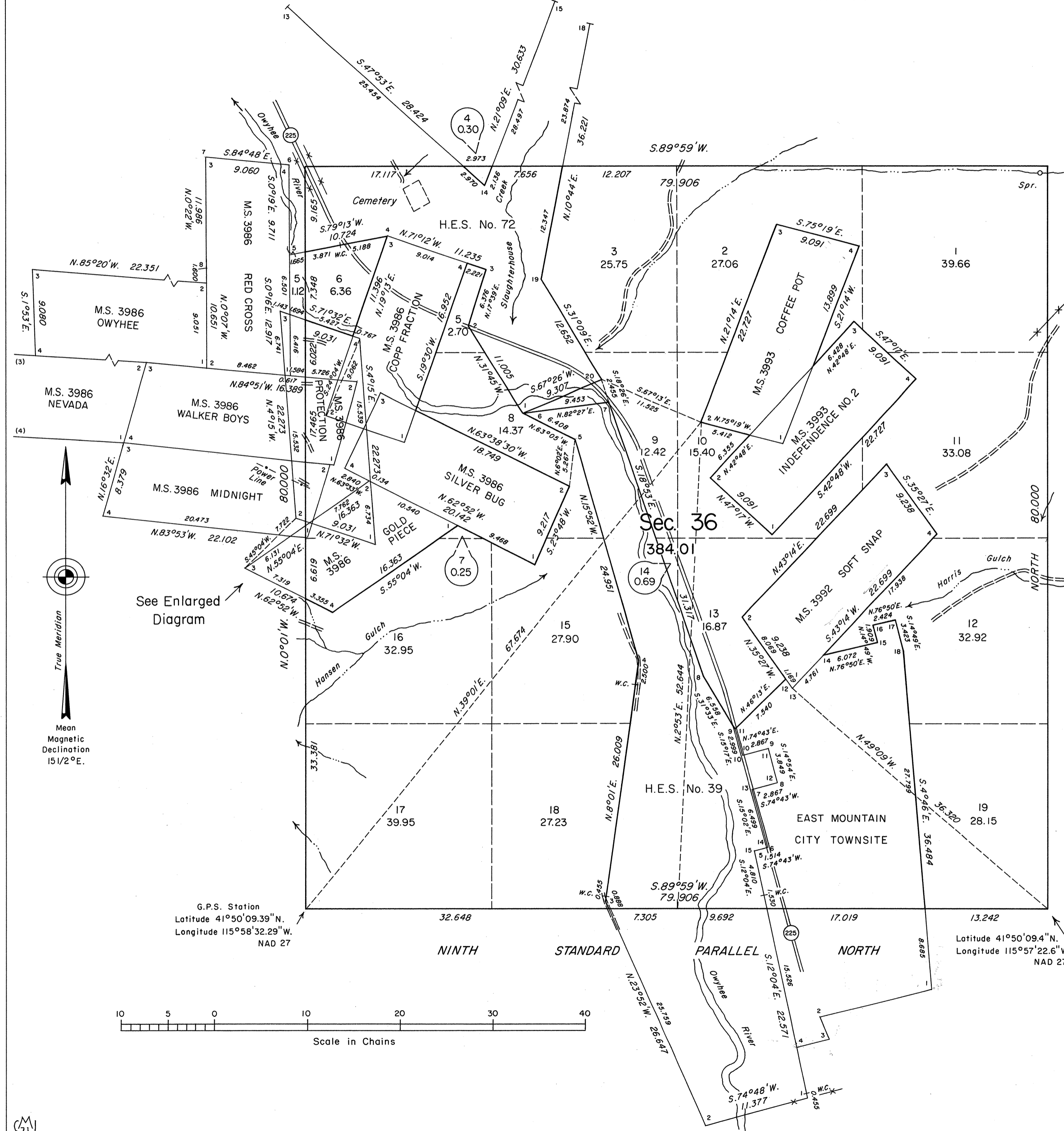


ORIGINAL

TOWNSHIP 46 NORTH, RANGE 53 EAST, OF THE MOUNT DIABLO MERIDIAN, NEVADA

DEPENDENT RESURVEY AND SURVEY

ENLARGED DIAGRAM



History of the earlier surveys is contained in the field notes.

This plat represents a dependent resurvey of the Ninth Standard Parallel North, through a portion of Range 53 East, dependent resurvey and remonumentation of certain corners of Mineral Survey Nos. 3986, 3992 and 3993, Homestead Entry Survey Nos. 39 and 72 and the East Mountain City Townsite, designed to restore the corners in their true original locations according to the best available evidence; and the survey of a portion of the east boundary and a portion of the subdivisional lines of T. 46 N., R. 53 E., Mount Diablo Meridian, Nevada.

Unless otherwise indicated in the field notes, all courses and distances, shown on the plat along the perimeter of the Mineral Surveys, Homestead Entry Surveys and the East Mountain City Townsite areas, were taken from the appropriate approved survey records.

Survey executed by Ronald E. Williams, Cadastral Surveyor, beginning June 6, 1990 and completed June 11, 1991, under Special Instructions dated May 9, 1990, for Group No. 686, Nevada.

UNITED STATES DEPARTMENT OF THE INTERIOR
BUREAU OF LAND MANAGEMENT

Reno, Nevada July 15, 1991

This plat is strictly conformable to the approved field notes, and the survey, having been correctly executed in accordance with the requirements of law and the regulations of this Bureau, is hereby accepted.

For the Director
John S. Parrish
Chief Cadastral Surveyor, Nevada

T.46N., R.53E., M.D.M.