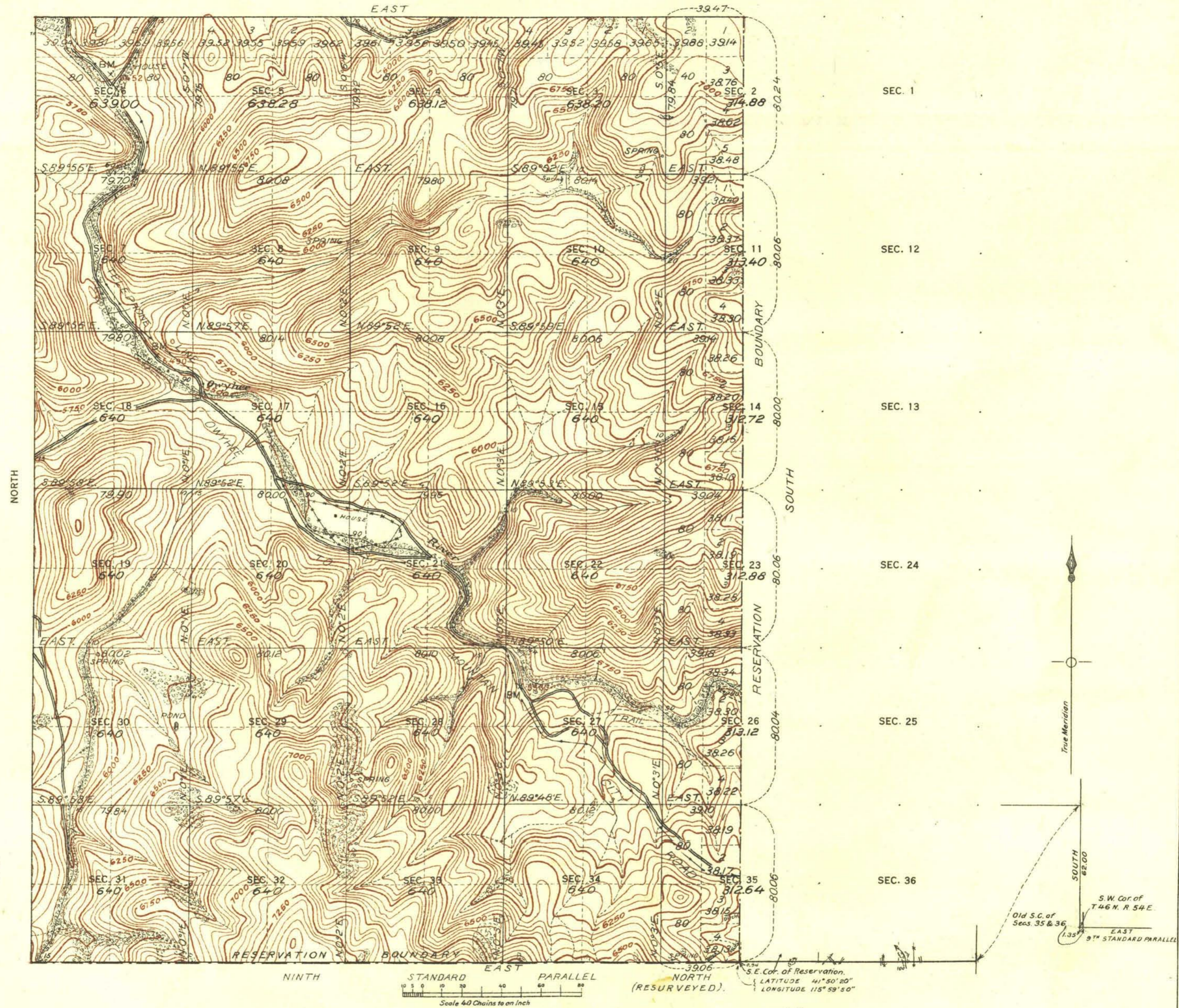


TOWNSHIP NO. 46 NORTH, RANGE NO. 53 EAST OF MOUNT DIABLO MERIDIAN, NEVADA.  
DUCK VALLEY INDIAN RESERVATION



Contour interval 50 feet  
Note: Curved lines or contours, are lines of equal elevation, and represent approximately the form of the earth's surface and the altitude above sea level.

SURVEYS DESIGNATED	BY WHOM SURVEYED	TITLE	WHEN SURVEYED
STANDARD LINES	F. E. JOY	U.S. SURVEYOR.	JULY 7, 8, 1911.
TOWNSHIP	"	"	JULY 10, 11, 14, 15, 1911.
SUBDIVISION	"	"	AUG. 19 - SEP. 5, 1911.
MEANDER	"	"	"
BOUNDARY	"	"	SEP. 10, 1911.

A. F. DUNNINGTON, Topographer in charge. Instructions April 27, 1911.

TOTAL NUMBER OF ACRES 17233.24

OF THE ABOVE MAP OF TOWNSHIP NO. 46 NORTH RANGE NO. 53 EAST OF MOUNT DIABLO MERIDIAN, NEVADA, IS STRICTLY CONFORMABLE TO THE FIELD NOTES OF THE SURVEY THEREOF ON FILE IN THIS OFFICE, WHICH HAVE BEEN EXAMINED AND APPROVED

GENERAL LAND OFFICE  
WASHINGTON, D. C. Nov. 4, 1914.

*C. M. Pierce*  
Acting Commissioner.