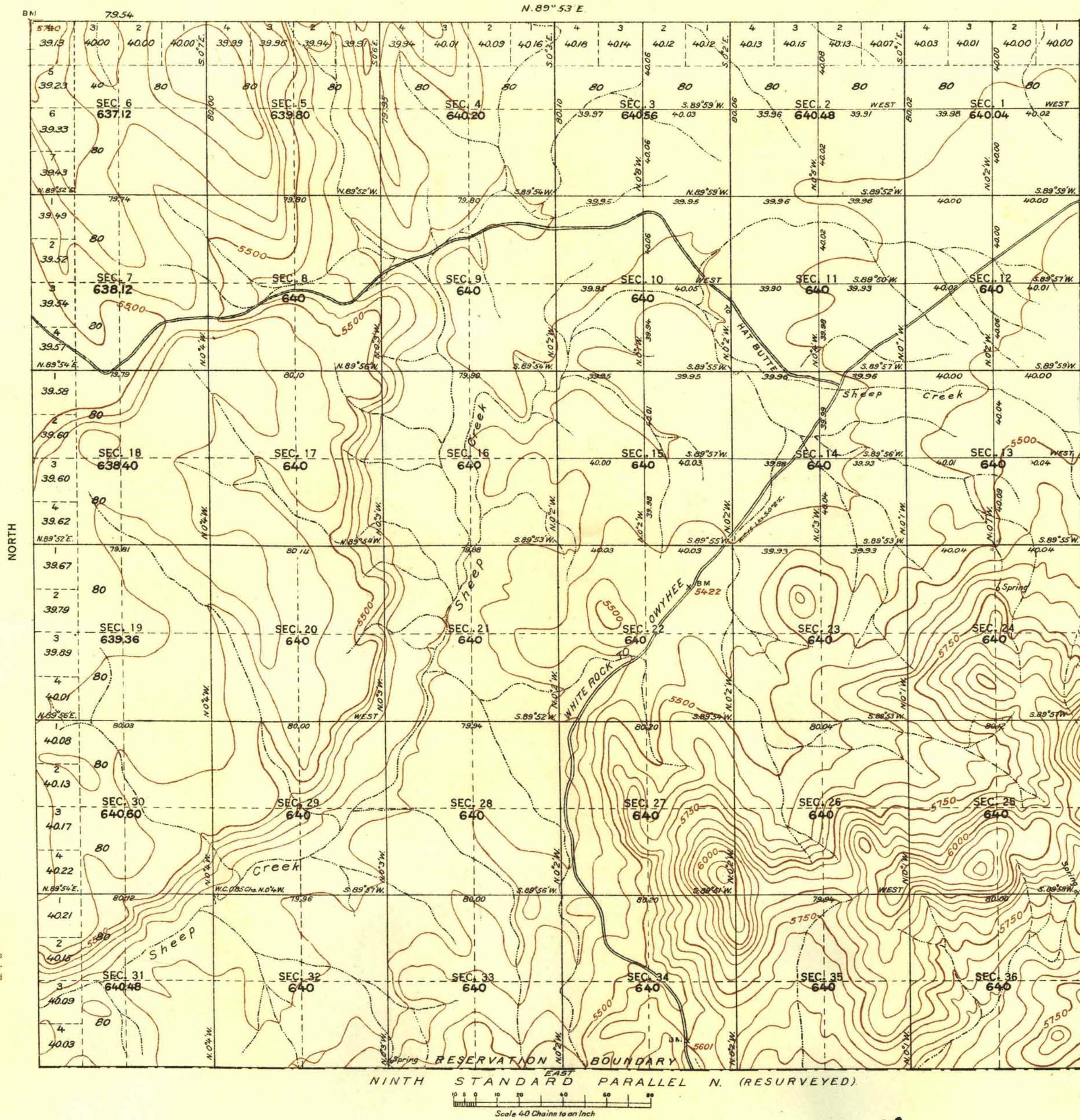


TOWNSHIP NO.46 NORTH, RANGE NO.51 EAST OF MOUNT DIABLO MERIDIAN, NEVADA.
DUCK VALLEY INDIAN RESERVATION



SURVEYS DESIGNATED	BY WHOM SURVEYED	TITLE	WHEN SURVEYED
STANDARD LINES	FRANCIS E. JOY	U.S. SURVEYOR	JULY 3, 5, 1911.
TOWNSHIP	"	"	JULY 15, & SEPT. 11-13, 1911.
SUBDIVISION	"	"	SEPT. 15-26, 1911.
MEANDER	"	"	"
BOUNDARY	"	"	JULY 3, 5, 1911

A. F. DUNNINGTON, Topographer in charge. Instructions April 27, 1911.

TOTAL NUMBER OF ACRES 2303516

O.C.
THE ABOVE MAP, OF TOWNSHIP NO.46 NORTH, RANGE NO.51 EAST OF MOUNT DIABLO MERIDIAN, NEVADA, IS STRICTLY CONFORMABLE TO THE FIELD NOTES OF THE SURVEY THEREOF ON FILE IN THIS OFFICE, WHICH HAVE BEEN EXAMINED AND APPROVED.

GENERAL LAND OFFICE
WASHINGTON, D. C. Nov. 4, 1914

C. W. Smith
Acting Commissioner.