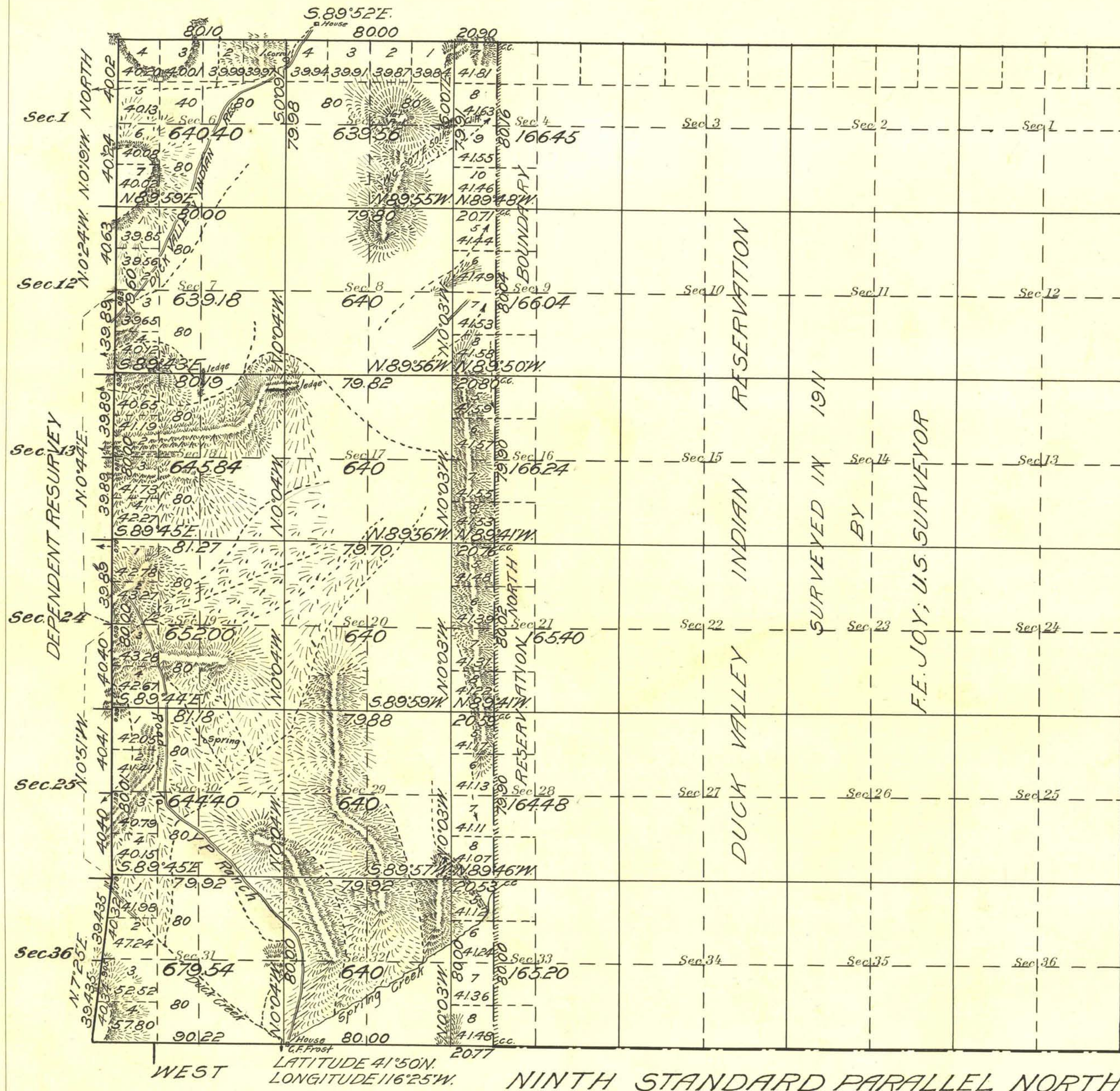


Township No. 46 North Range No. 50 East Mt. Diablo Meridian, Nevada.

Survey accepted G. L. O.  
February 6, 1920.



Areas in Acres	
Public Land	8734.73
Indian Reservation	
Indian Allotments	
Mineral Claims	
Water Surface	
<b>Total Area</b>	<b>8734.73</b>

0 10 20 40 80  
Scale 40 Chains to an inch  
Mean Magnetic Declination 13° 45' East

Surveys Designated	By Whom Surveyed	Group	Amount of Surveys			When Surveyed	
			No.	Mls.	chs.	fms.	Began
North Bay	J. C. Clark	51	2	21	00	Sept. 25, 1918	Oct. 12, 1918
West Bay Resur.	L. R. Mercer	" and "	6	00	53	Sept. 21, 1918	Oct. 14, 1918
Subdivision	U.S. Transitmen	" Sept. 26, 1918	23	24	96	Sept. 27, 1918	Oct. 12, 1918

The above map of Township No. 46 North Range No. 50 East of the Mt. Diablo Meridian, Nevada is strictly conformable to the field notes of the survey thereof on file in this office, which have been examined and approved.

U. S. Surveyor General's Office.  
Reno, Nevada, May 1, 1919

*John B. Sullivan*  
Surveyor General.