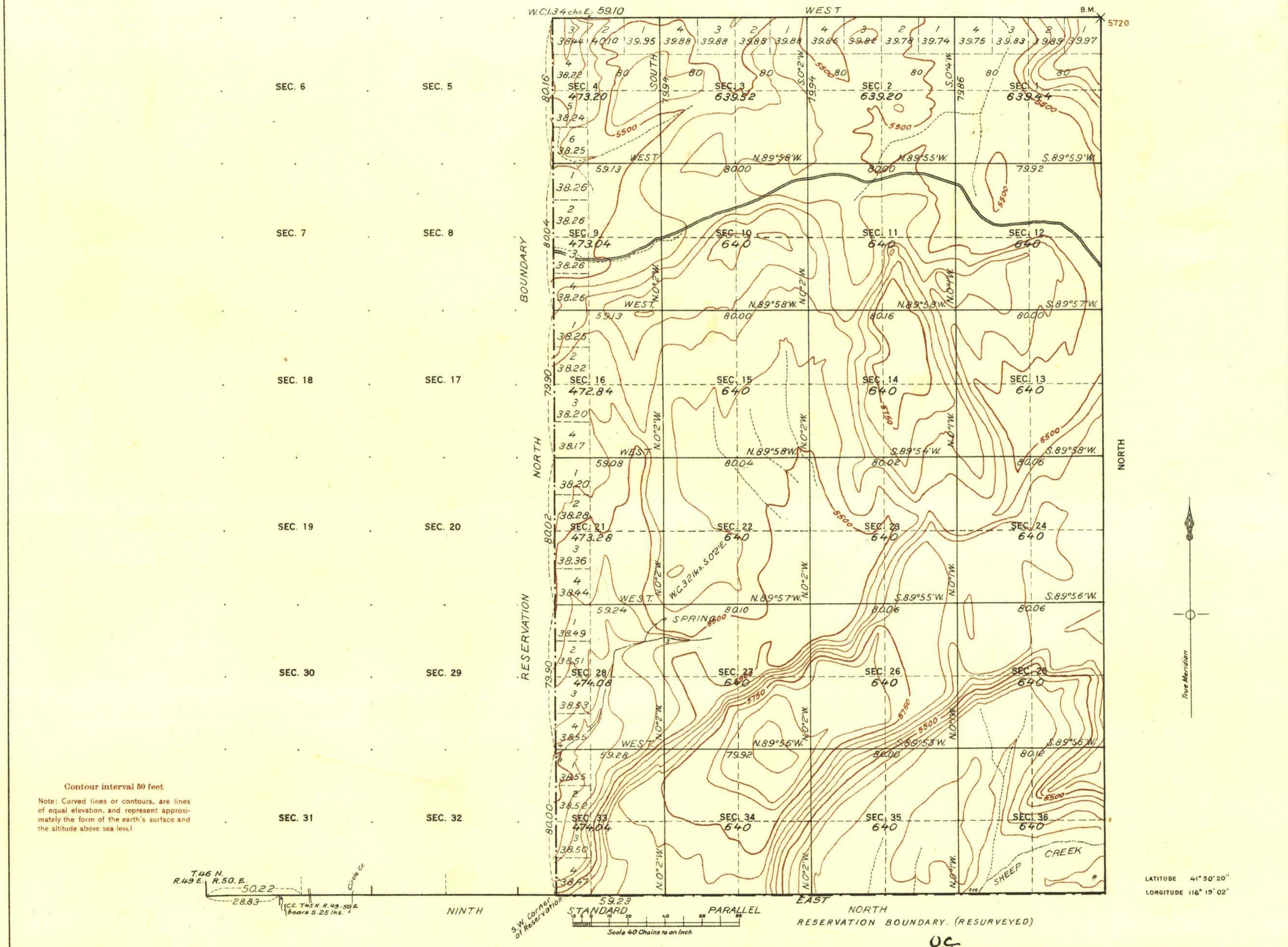
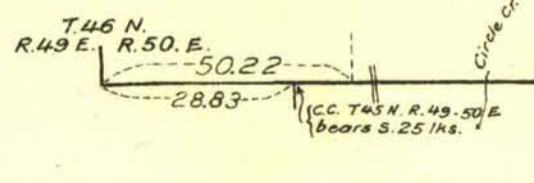


TOWNSHIP NO. 46 NORTH, RANGE NO. 50 EAST OF MOUNT DIABLO MERIDIAN, NEVADA.
DUCK VALLEY INDIAN RESERVATION



Contour interval 50 feet
Note: Curved lines or contours, are lines of equal elevation, and represent approximately the form of the earth's surface and the altitude above sea level



TOTAL NUMBER OF ACRES 14358.64

SURVEYS DESIGNATED	BY WHOM SURVEYED	TITLE	WHEN SURVEYED
STANDARD LINES	F. E. JOY	U.S. SURVEYOR.	JUNE 30, JULY 1, 1911.
TOWNSHIP	"	"	SER. 14, 1911.
SUBDIVISION	"	"	SER. 14-23, 1911.
MEANDER	"	"	"
BOUNDARY	"	"	OCT. 15, 1911.

A. F. DUNNINGTON, Topographer in charge. Instructions April 27, 1911.

OC
THE ABOVE MAP OF TOWNSHIP NO. 46 NORTH, RANGE NO. 50 EAST OF MOUNT DIABLO MERIDIAN, NEVADA, IS STRICTLY CONFORMABLE TO THE FIELD NOTES OF THE SURVEY THEREOF ON FILE IN THIS OFFICE, WHICH HAVE BEEN EXAMINED AND APPROVED.

U. S. GENERAL LAND OFFICE
WASHINGTON, D. C. Nov. 4, 1914.

C. M. Bruce
Acting Commissioner.