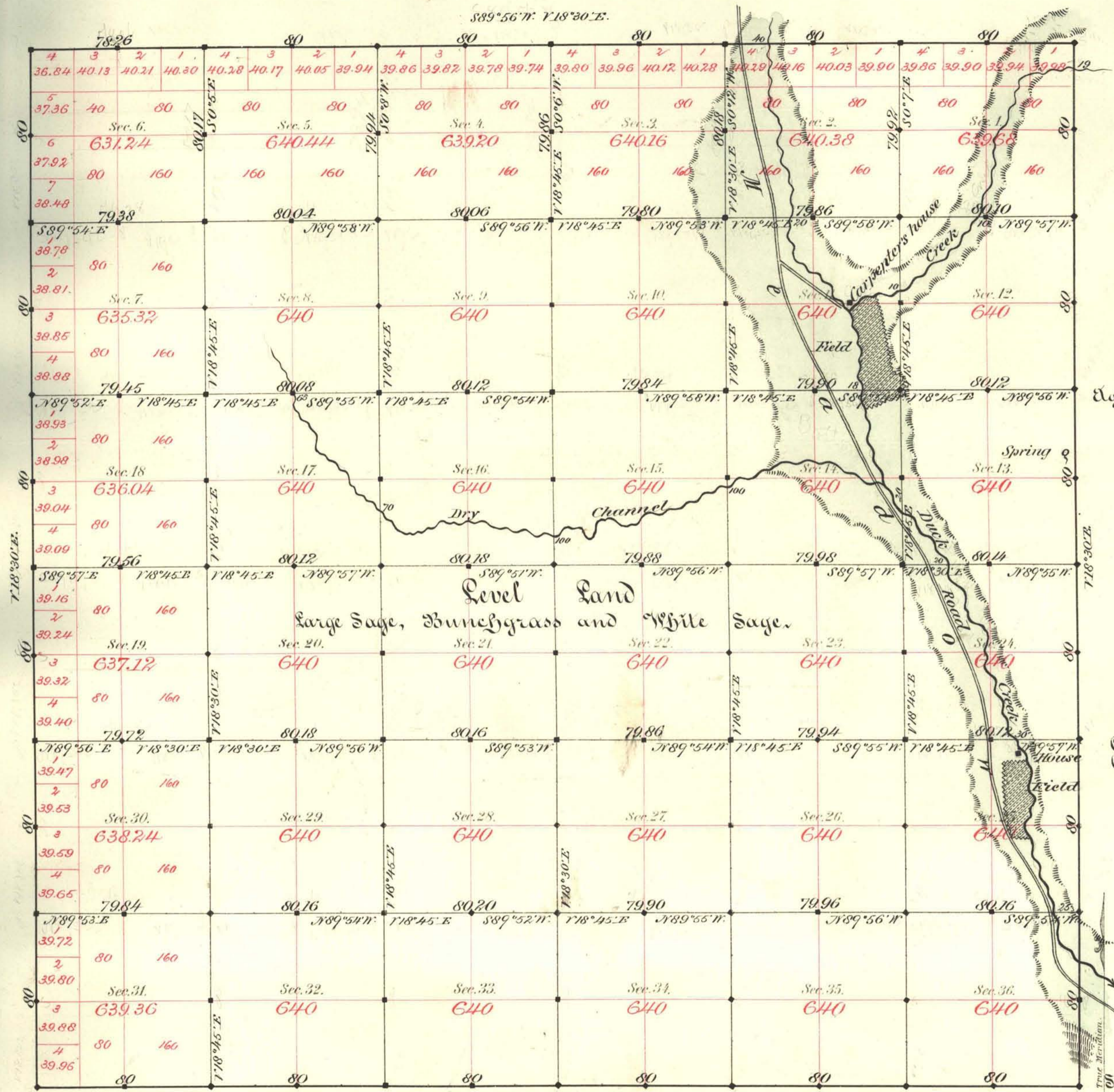


TOWNSHIP N^o 46 NORTH RANGE N^o 49 EAST MOUNT DIABLO MERIDIAN



Aggregate Area of Public Land surveyed 23077.18 Acres.

Commenced August 22nd 1882.
Completed " 27th "

Subdivisions not noted run with a Variation of 19° East.

For connections see T 45

Retraced.

Surveys Designated	By Whom Surveyed	Date of Contract	Amount of Surveys	When Surveyed	79 Cont.
S. Bdy.	Kate & Eaton	Feb. 6 th 1871	8-00-50	1871	43
retraced	Sitzpatrick & Smyles	July 25 th 1882	6-00-00	1882	153
S. Bdy.			17-78-26	August	
Subdivisions			59-78-88		

The above Map of Township N^o 46 North of Range N^o 49 East of Mt. Diablo Meridian is strictly conformable to the field notes of the survey thereof on file in this Office, which have been examined and approved.

Surveyor General's Office,
Reno, Nevada

W. J. Davis
Sur. Gen. Nevada

December 28th 1882

A.L. Bancroft & Co. Lith. S.F.